



Façade excellence for every building

An overview of the alsecco external wall insulation systems



ARCHITECTURAL FAÇADES



Changing the face of the façade

Monotonous façade design has now become a thing of the past. Representing more than solely a protective envelope, façades have become expressive, conveying the character of both the building and its designer.

Design requirements have consequently become far more individual. Façade designs must fulfil the ideas, concepts and needs of the client and **alsecco** can help you achieve this.

The **alsecco** fresh and modernistic approach is to liberate creativity in façade design. The technical requirements are taken care of by offering only systems that meet even the most stringent technical and planning requirements allowing total freedom of choice from our range. Furthermore, with the widest collection of innovative products in any portfolio, the design possibilities are endless.

Contents:

	Page
FAÇADE SYSTEMS WITH POLYSTYRENE INSULATION	
Alprotect Carbon.....	4
Alprotect Quattro.....	6
Basic.....	8
Basic FS.....	10
FAÇADE SYSTEMS WITH PHENOLIC INSULATION	
Basic Phenolic.....	12
FAÇADE SYSTEMS WITH MINERAL WOOL INSULATION	
Alprotect Nova.....	14
Ecomin.....	16
Ecomin FS.....	18
EDITION ALSECCO	
Scope for design.....	20
TECHNICAL	
System summary.....	22

High impact resistance, many colour options



4

In a class of its own: **alsecco Alprotect Carbon**

Representing the first External Wall Insulation (EWI) system to offer unique carbon fibre technology, Alprotect Carbon is a revelation in façade durability. Offering maximum resistance to mechanical stress (up to 60 joules) in combination with improved thermal performance, Alprotect Carbon fuses the extreme toughness and versatility of carbon fibre reinforcement with ultra-modern façade technology.

A premium façade system like no other, Alprotect Carbon sets a new standard in durability for slim-line systems.

Through extensive development work, **alsecco** have created a patented system that achieves enormous stability and unrivalled impact strength by utilising the most modern façade technology available.

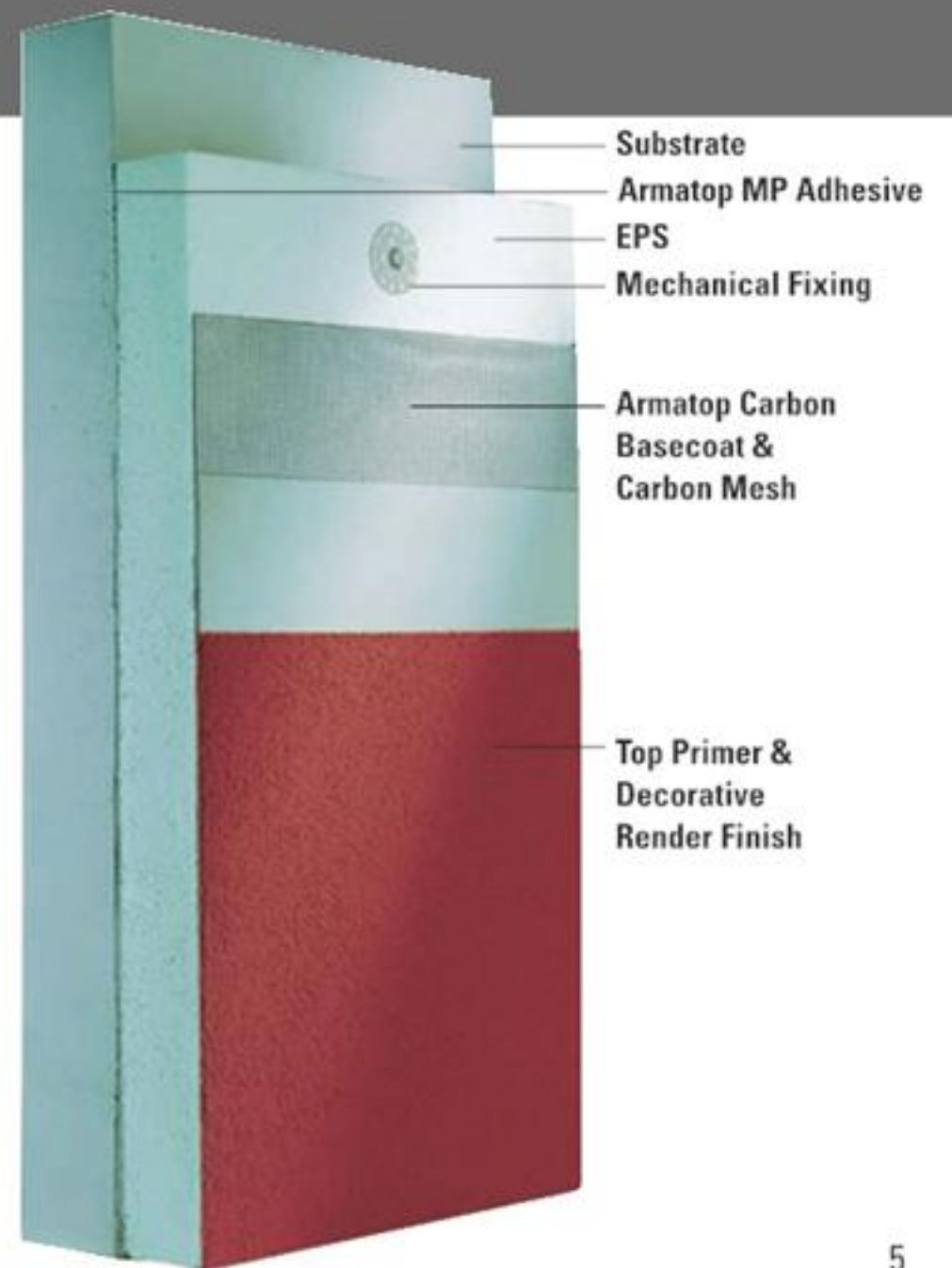


Features of the Alprotect Carbon system

- Carbon fibre technology
- High impact strength for a thin coat system
- Up to 60 joules achievable
- Wide range of colours including dark and intensive hues
- Efficient application (time saving approx 30%) compared with conventionally reinforced systems
- Maximum performance, minimum weight
- Enhanced protection against algae and fungal growth
- Maximum level of crack resistance

Approvals

- European Technical Approval ETA -08/0070
- German Institute of Construction and Engineering DIBt Z-33.84-1074
- NSAI 11/0360



Proven quality and established technology



6

Reliability where you need it most: **alsecco Alprotect Quattro**

The carefully selected combination of organic components make Alprotect Quattro extremely resistant to mechanical stress, highly insulating and not susceptible to soiling whilst also offering ultimate protection against the damaging attack of algae and fungal growth.

In addition, highly elastic organic components work harmoniously with the insulation board, guaranteeing high impact resistance and reliable crack bridging properties.

Alprotect Quattro meets the requirements of the European Standard Approval Etag 004 and has received the highest classification.

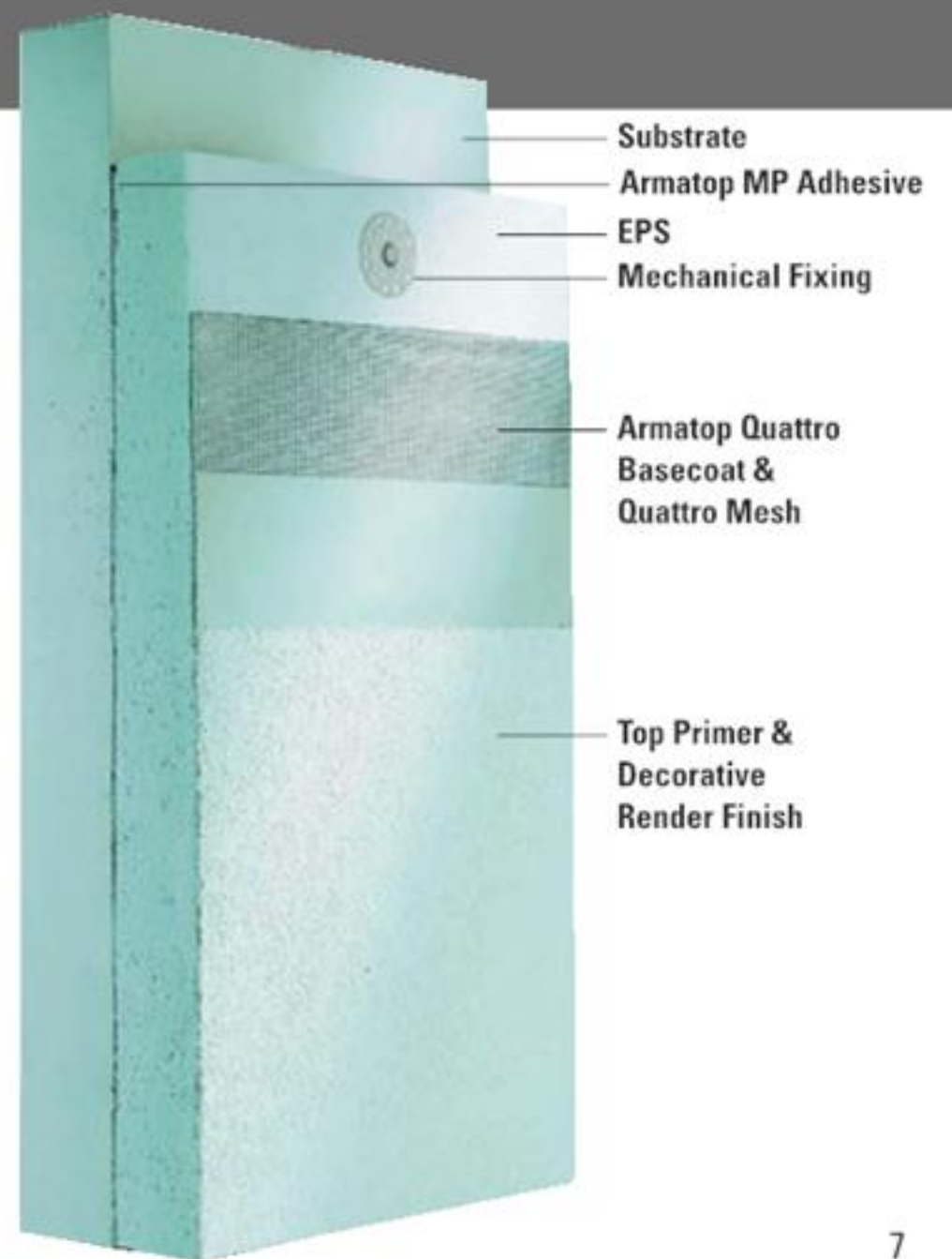


Features of the Alprotect Quattro system

- Organic system, totally cement-free
- High level of impact resistance
- Low material consumption
- Improved UV stability
- Wide range of colours to a light reflectance value of 15
- High level of resistance to mechanical stress
- Enhanced protection against algae and fungal growth

Approvals

- European Technical Approval ETA -07/0102
- German Institute of Construction Engineering DIBt Z-33.84-1014
- NSAI 11/0360



Economic system, premium performance



8

Proven performance need not cost the earth: **alsecco Basic**

As an external composite system, **alsecco Basic** is the first choice for designers. Both economical and versatile, it has already been tried and tested on millions of square metres and on all types of buildings for decades. Offering excellent efficiency values, **alsecco Basic** allows you to make a real contribution

to energy saving and environmental protection in the most cost-effective manner.

alsecco Basic is available in an array of finishes meaning almost any design requirements can be fulfilled including **alsecco Editions**.

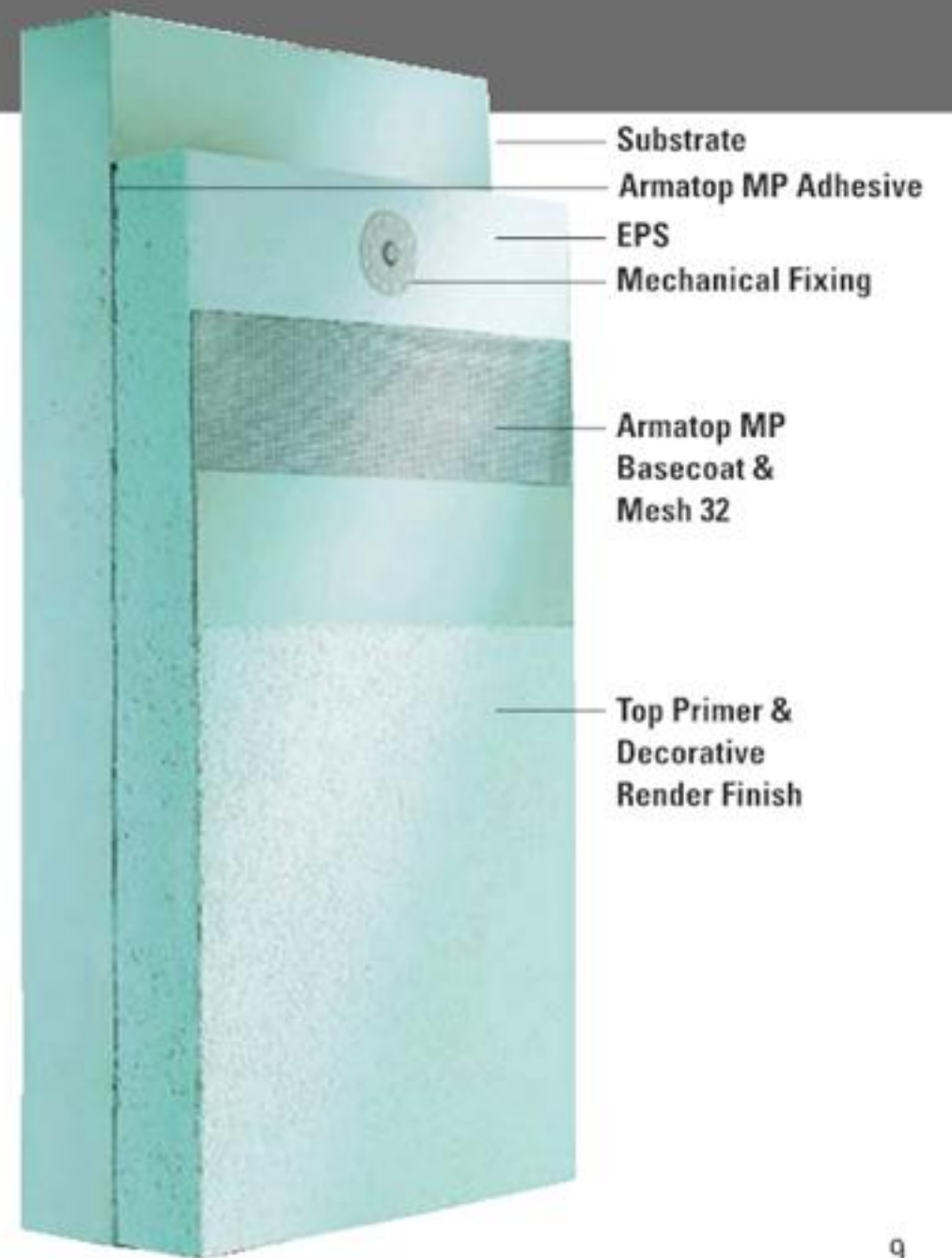


Features of the Basic system

- Most cost effective solution
- Excellent detailing options
- Proven technology
- Wide range of finishes, textures and colours
- Reliable protection and crack resistance

Approvals

- British Board of Agreement Certificate 96/3238
- European Technical Approval ETA 10/0433
- German Institute of Construction Engineering DIBt Z-33.43-52, Z-33.49-1072, Z-33.46-419, Z-33.42-53, Z-33.41-59, Z-33.47.832
- NSAI 11/0360



NHBC compliant, can be used with light gauge steel frame



Tested and guaranteed performance – **alsecco Basic FS**

The use of light gauge steel frame (LGSF) infill as a form of main stream construction has risen considerably over the last few years. **alsecco** has been at the forefront of research and development, working with all of the main parties including steel frame companies, architects and engineers, to develop a system to fulfil everyone's requirements.

The NHBC is the leading warranty and insurance provider for new and newly converted homes in the UK. Their role is to specifically work with house builders and the construction industry as a whole providing risk

management services to raise the constructed standard of new homes. More than 85% of new homes built in the UK each year are registered with the NHBC.

As part of their insured specification, the NHBC have a requirement for the inclusion of a drainage cavity behind the EWI system which acts as a secondary line of defence against moisture ingress. The **alsecco Basic FS** system was the first EPS system to meet the requirements of BS 8414 PT 2:2005 and has been accepted and utilised on a wide range of NHBC warranted developments throughout the UK.



Features of the Basic FS system

- BRE tested to BS 8414 -2:2005
- NHBC compliant solution
- Robust design
- Wide range of finishes, textures and designs
- Reliable protection and crack resistance
- Economic NHBC solution



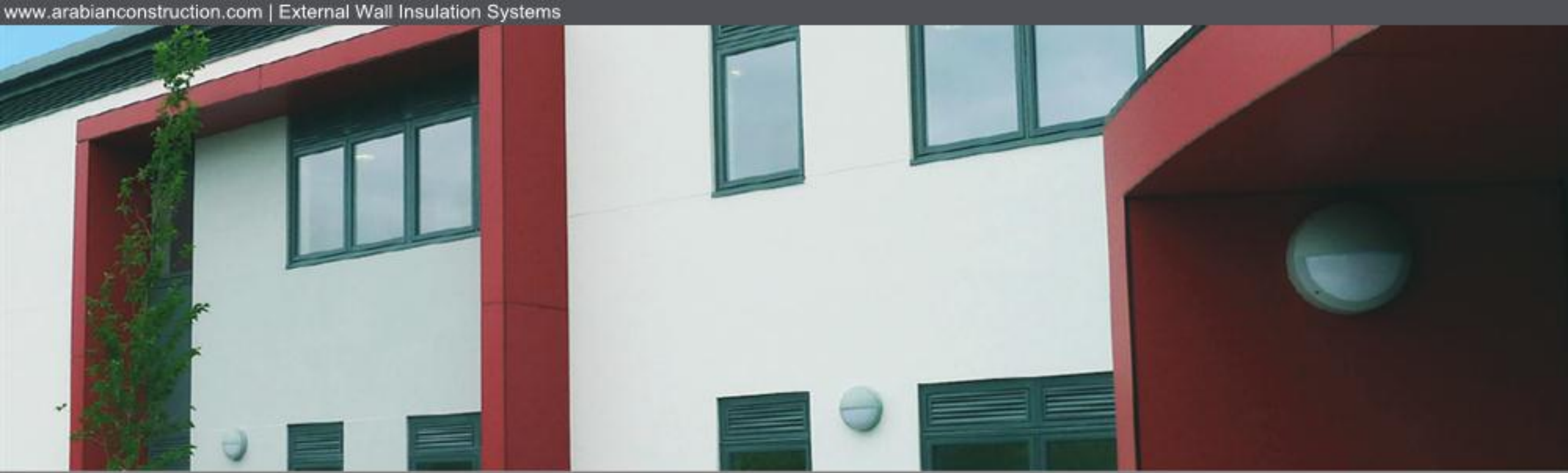
Slimline insulation, improved thermal performance



Save energy and provide long-term protection – **alsecco Basic Phenolic**

Where thermal performance and the long-term protection of the building are key, **alsecco Basic Phenolic** is the ideal external composite system. Incorporating phenolic insulation means an overall thinner system ensuring energy savings for owners and occupants alike.

alsecco Basic Phenolic is available in a number of finishes from decorative renders in a range of textures and colours to colour-matched brick slips and spar dash, offering the architect limitless design options.



Features of the Basic Phenolic system

- Optimum performance, thinner system
- Increased thermal performance
- Water repellent
- Excellent weathering and durability
- Excellent for detailing
- Wide range of textures, colours and finishes

Approvals

- European Technical Approval ETA 11/0038
- German Institute of Construction Engineering DIBt Z-33.84-1287
- NSAI 11/0360



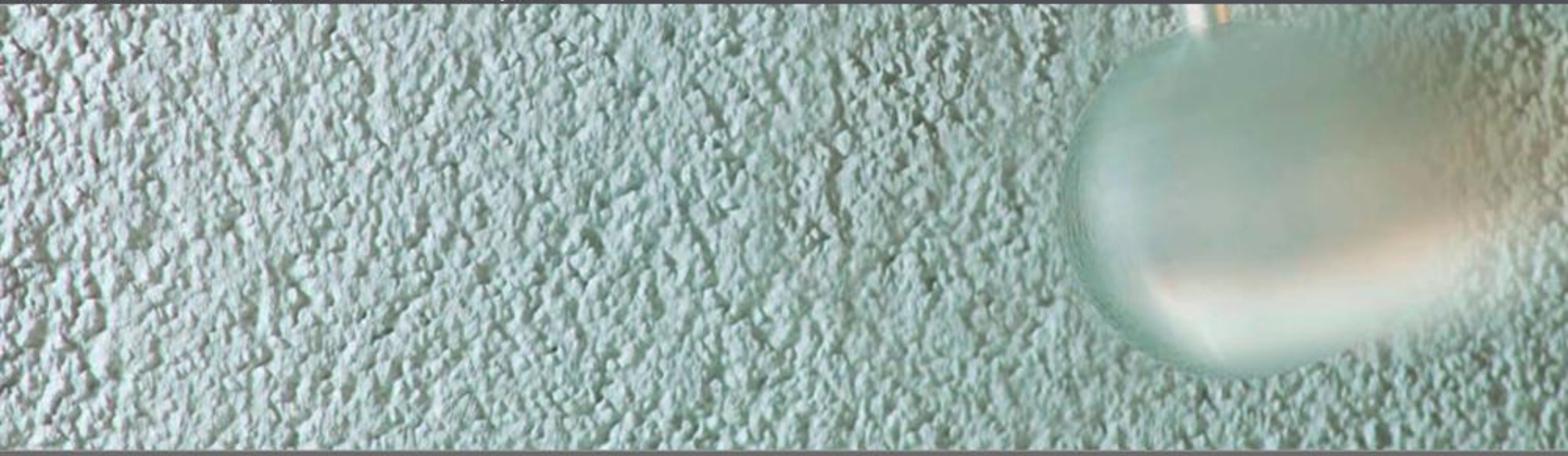
Maximum fire protection, maximum impact resistance, maximum choice of colours



The complete solution: **alsecco Alprotect Nova**

The first system in Europe to be classified with European Technical Approval Fire Protection class A, Alprotect Nova has many totally unique components including the **alsecco** patented carbon technology and nano-hybrid binders. The result is a premium mineral wool insulation system that sets new standards in protection and durability.

The new system formulations can also be applied with light reflectance values as low as 5%. Consequently colour restrictions that used to apply to insulated render systems are now a thing of the past. All shades including the darker ones and even black can be successfully used in the façade.

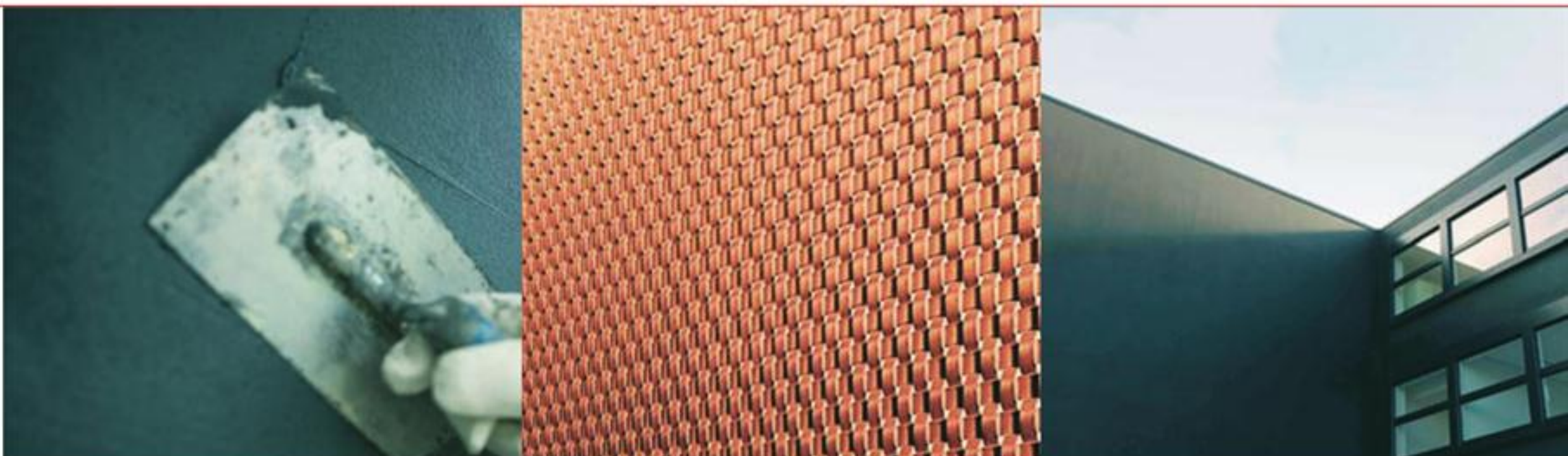


Features of the Alprotect Nova system

- Maximum fire protection
- Patented carbon fibre technology
- Unrivalled impact strength delivered from a thin coat system – up to 60 joules achievable
- Superior UV stability
- Highest level of dark colours, permissible – light reflectance values as low as 5
- Efficient application ; time saving approx 30% compared with conventionally reinforced systems.
- Maximum performance, reduced weight
- Enhanced protection against algae and fungal growth
- Maximum level of crack resistance

Approvals

- European Technical Approval ETA-09/0278
- German Institute of Construction Engineering DIBt Z-33.84-1181
- NSAI 11/0360



Affordable excellence in thermal performance and fire protection



Tried, tested and proven: **alsecco Ecomin**

As the first mineral wool system available on the market, the track record of **alsecco Ecomin** is unsurpassed. Since its launch, it has proved extremely practical and the most cost effective way to satisfy both thermal requirements and stringent European fire regulations.

Since the systems' introduction, investment in technological development has ensured that Ecomin remains at the forefront of the very competitive, economy segment of the market. Boasting higher vapour permeability than average and superior fire retardancy, **alsecco Ecomin** remains the markets preferred choice when budget constraints restrict the options available.

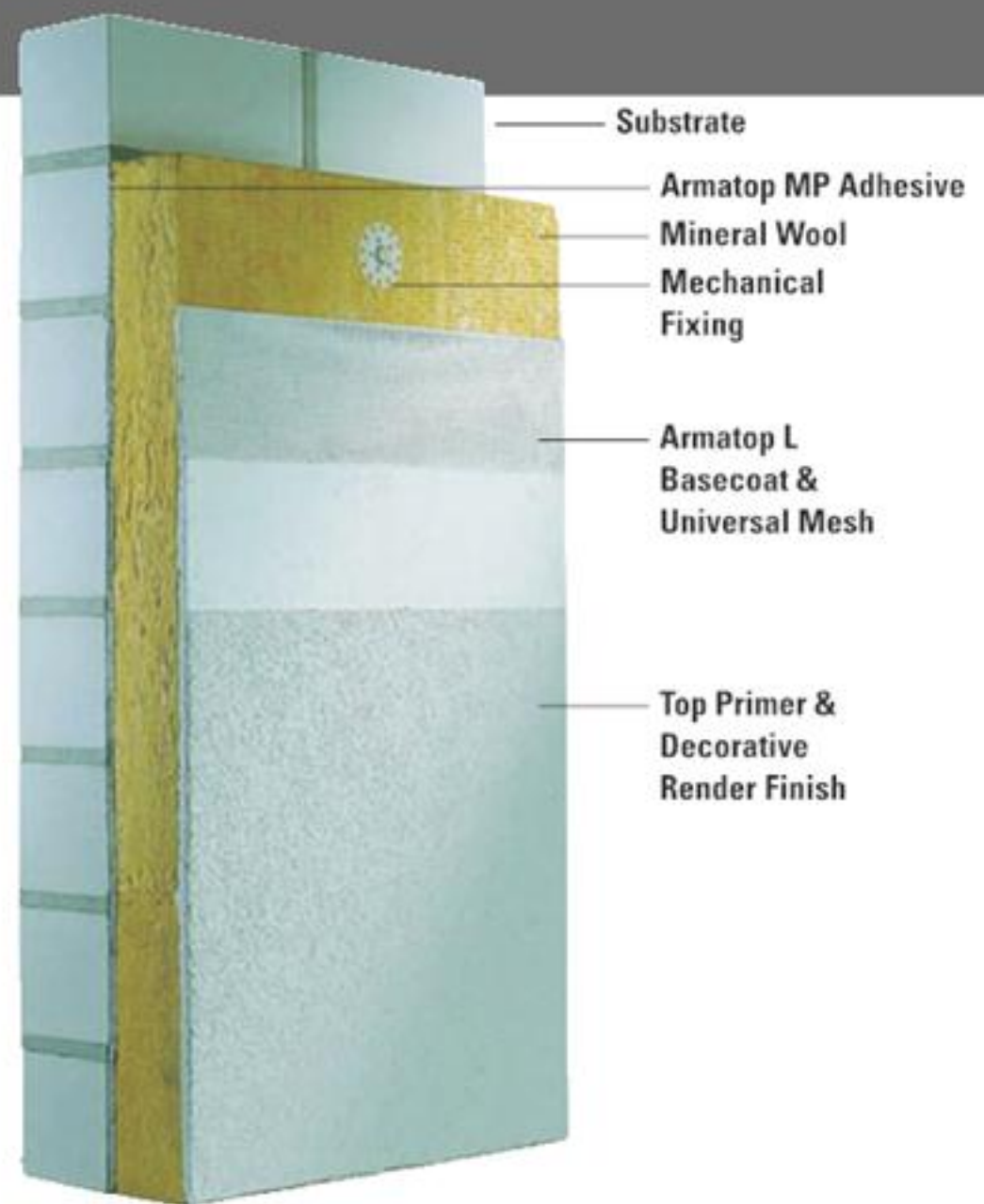


Features of the Ecomin system

- Highly fire retardant
- Highly cost effective
- High vapour permeability
- Mineral wool insulation
- Excellent detailing options
- Wide range of finishes, textures and colours
- Reliable protection and crack resistance

Approvals

- British board of agreement certificate 96/3247
- German Institute of Construction Engineering DIBt Z-33.43-52, Z-33.49.1072, Z-33.42-53, Z-33.46-419, Z-33.44-60



NHBC compliant, compatible with light gauge steel frame



Tested and guaranteed performance – **alsecco Ecomin FS**

The use of light gauge steel frame (LGSF) infill as a form of main stream construction has risen considerably over the last few years. **alsecco** has been at the forefront of research and development, working with all of the main parties including steel frame companies, architects and engineers, to develop a system to fulfil everyone's requirements.

The NHBC is the leading warranty and insurance provider for new and newly converted homes in the UK. Their role is to specifically work with house builders and the construction industry has a whole providing

risk management services to raise the constructed standard of new homes. More than 85% of new homes built in the UK each year are registered with the NHBC.

As part of their insured specification, the NHBC have a requirement for the inclusion of a drainage cavity behind the EWI system which acts as a secondary line of defence against moisture ingress. The **alsecco Ecomin FS** system meets the requirements of BS 8414 PT 2:2005 and has been accepted and utilised on a wide range of NHBC warranted developments throughout the UK.



Features of the Ecomin FS system

- BRE tested to BS 8414-2:2005
- Mineral wool insulation
- NHBC Compliant solution
- Robust design
- High vapour permeability
- Wide range of finishes, textures and colours
- Reliable protection and crack resistance



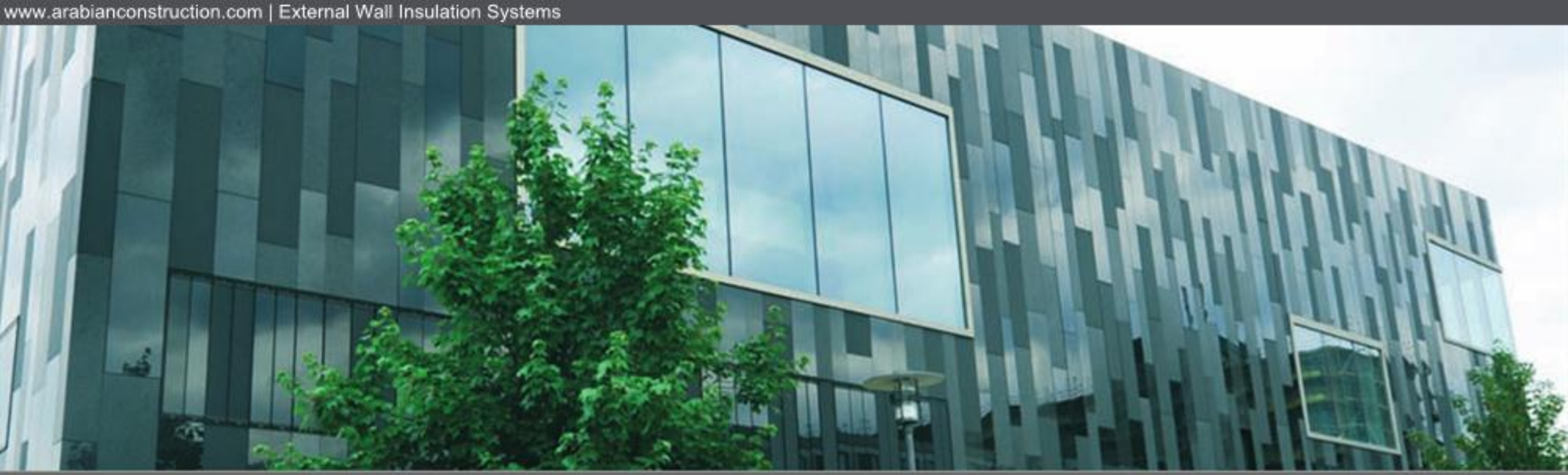
Individual façades created with a combination of finishes



edition **alsecco**: Scope for design

Indigenous natural stone, local clay brick, flexible acrylic lightweight brick slips, glazed ceramics and modern glass finishes are all possible when you specify **alsecco** external wall insulation systems. With the vast portfolio of products included in the edition **alsecco** range there are very few design aspirations that cannot be achieved.

All the edition products are available for use as feature panels in a combination façade design or as a total envelope cladding system.



Alprotect Stone



Ceramic



Flexible Brick Slip



Clay Brick Slip



Airtec Glass





System-Features	Alprotect Carbon	Alprotect Quattro	Basic
REACTION TO FIRE IN ACCORDANCE WITH DIN EN 13501	"B-s2,d0"	"B-s2,d0"	Class 0 "B-s1,d0 or B-s2,d04"
COLOUR RANGE	≥ LRV 12	≥ LRV 15	≥ LRV 20
THERMAL PROTECTION	+++	++	++
IMPACT STRENGTH	+++	++	+
COLOUR STABILITY	+++	++	+
SOILING TENDENCY	+++	+++	++
ALGAE AND FUNGAL WARRANTY	5 years	5 years	Dependent on system build-up
PROTECTION AGAINST CRACKING	+++	++	++
FIXING METHODS	Adhesive & Mechanical. Rail solution option also available	Adhesive & Mechanical. Rail solution option also available	Adhesive & Mechanical. Rail solution option also available
INCREASED SOUND INSULATION	No	No	No
INSULATING MATERIAL	EPS	EPS/XPS	EPS/XPS
"THERMAL TRANSMITTANCE COEFFICIENT, INSULATING MATERIAL"	0.037 W/mK	0.037 W/mK	0.037 W/mK
CARBON TECHNOLOGY	Yes	No	No
LIGHTWEIGHT RENDER TECHNOLOGY	Yes	Yes	Yes
THICKNESS OF INSULATING MATERIAL	20 – 400 mm	20 – 380 mm	20 – 380 mm
NANOTECHNOLOGY (ACC TO APPROVAL)	Yes	Yes	Yes
SURFACE FINISH	A wide range of materials, textures and colours available	A wide range of materials, textures and colours available	A wide range of materials, textures and colours available



Basic FS	Basic Phenolic	Alprotect Nova	Ecomin	Ecomin FS
Class 0 "B-s1,d0 or B-s2,d04"	Class 0 "B-s1,d0 or B-s2,d04"	"A2-s1,d0"	"A2-s1,d0"	"A2-s1,d0"
≥ LRV 20	≥ LRV 20	≥ LRV 5	≥ LRV 20	≥ LRV 20
++	++	++	++	++
+	+	+++	+	++
+	+	+++	+	++
++	++	+++	++	+++
Dependent on system build-up	Dependent on system build-up	5 years	Dependent on system build-up	5 years
++	++	+++	++	++
Adhesive & Mechanical	Adhesive & Mechanical	Adhesive & Mechanical. Rail solution option also available	Adhesive & Mechanical. Rail solution option also available	Adhesive & Mechanical
No	No	Possible	Possible	Possible
EPS	Phenolic rigid board	Mineral wool	Mineral wool	Mineral wool
0.037 W/mK	0.020 – 0.023 W/mK	0.036 W/mK	0.036 – 0.040 W/mK	0.036 W/mK
No	No	Yes	No	No
Yes	Yes	Yes	Yes	Yes
20 – 380 mm	40 – 140mm	40 – 200 mm	40 – 300 mm	40 – 200 mm
Yes	Yes	Yes	Yes	Yes
A wide range of materials, textures and colours available	A wide range of materials, textures and colours available	A wide range of materials, textures and colours available	A wide range of materials, textures and colours available	A wide range of materials, textures and colours available



Scan for our website

alsecco (UK) Ltd.
Whitebridge Way, Stone
Staffordshire, ST15 8GH
Tel: 01785 818998
Fax: 01785 818144
www.alsecco.co.uk



ARCHITECTURAL FAÇADES