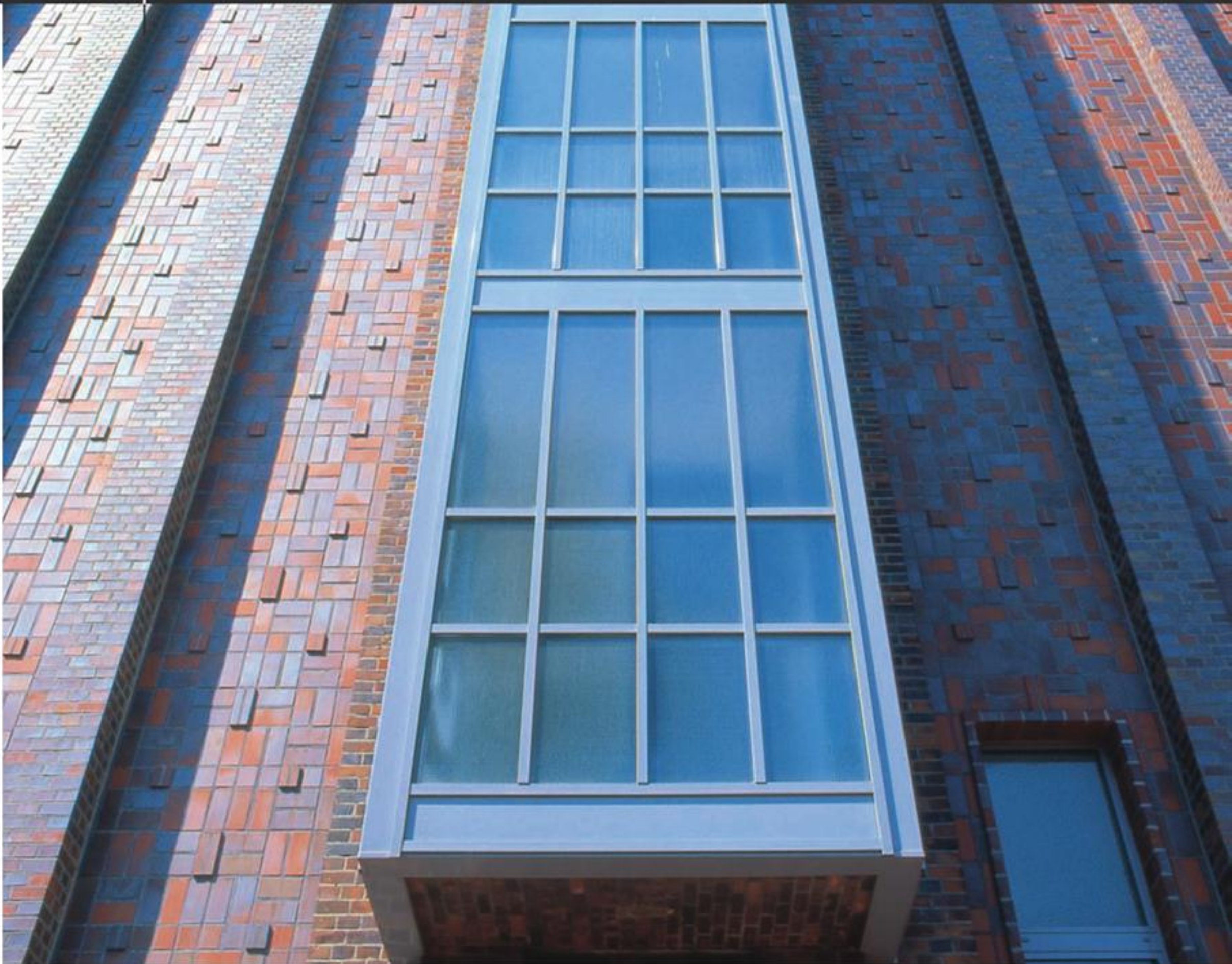


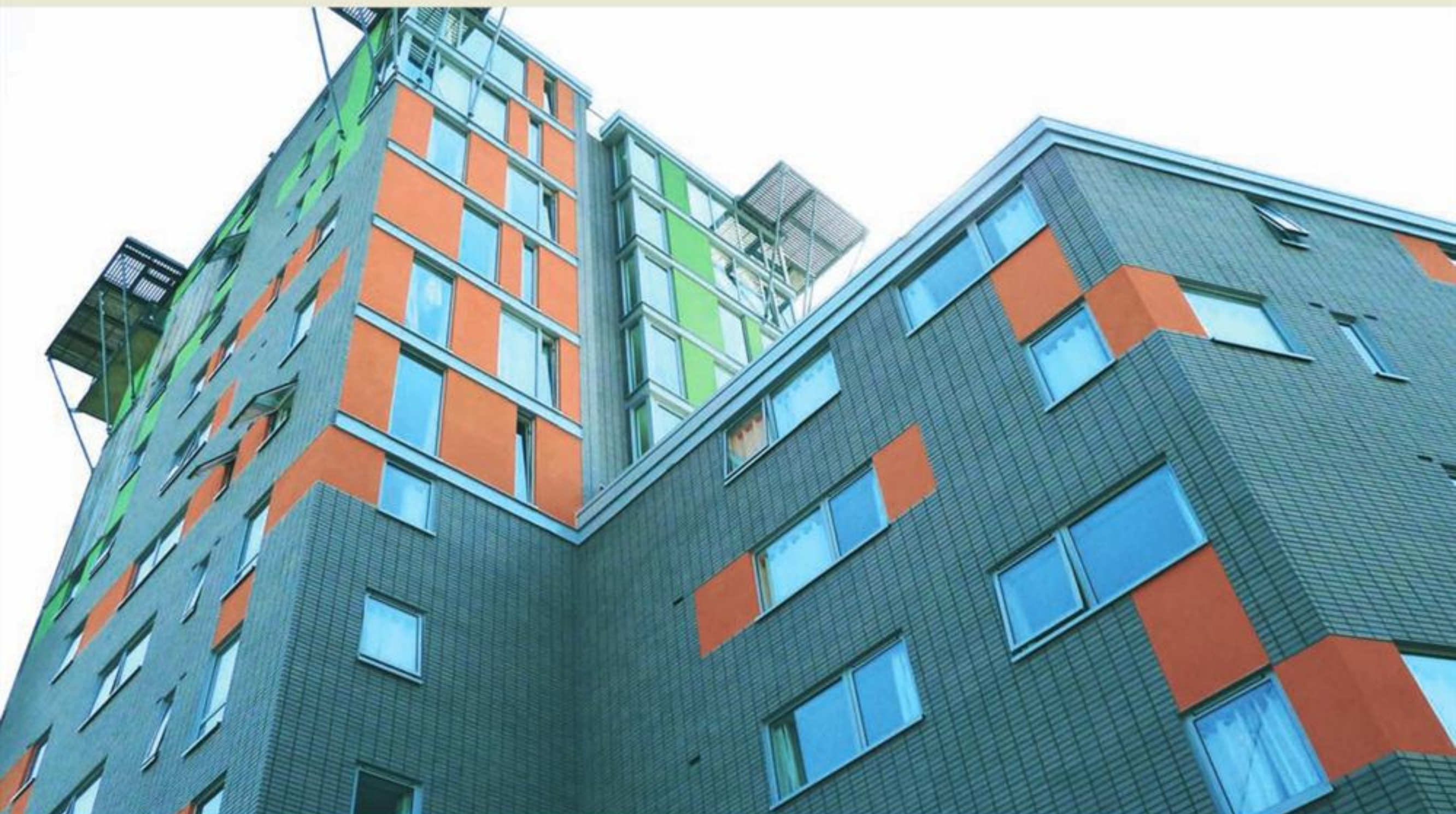


## Flexible BRICK SLIPS

Flexible lightweight brick slip façades



## alsecco flexible brick slips



2

## Architecture meets **modern technology**

Over time, façade design has undergone many changes to reflect architectural styles. Materials used in the design often change to satisfy trends with very few standing the test of time. Brick, however is one of the few that has. Dependable, enduring and striking – brick creates timeless façades regardless of fashion.

alsecco's brick slip range combines technology and tradition to offer optimum performance for flexible acrylics and the timeless aesthetics of brick.

Light in weight, the brick slips are an ideal finish for external wall insulation systems. The flexible acrylic brick slips are only 4-6mm thick and can simply be fixed with adhesive to the base coat render system for either the whole façade or for feature panels.

Each acrylic brick slip is handmade using only the highest quality raw materials guaranteeing the natural traditional appearance of brick.



alsecco brick slips can be used to transform an old façade to give it a modern and sophisticated appearance, but can equally be used for new build projects too, ensuring an outstanding finish.

- Flexible
- Lightweight
- Easy to apply
- Can be cut with hand tools
- No need to point

The flexibility of the brick slips ensures that they can be manipulated to fit radiused surfaces and are easy to cut to size using ordinary hand tools.

Behind the brick slips, alsecco apply a fully reinforced render system that provides a high degree of impact resistance, weather resistance and vapour permeability.

alsecco brick slips offer a modern solution to replicate traditional construction methods. alsecco offer a colour-matching service which ensures that the exact colour and finish required for a project is realised.



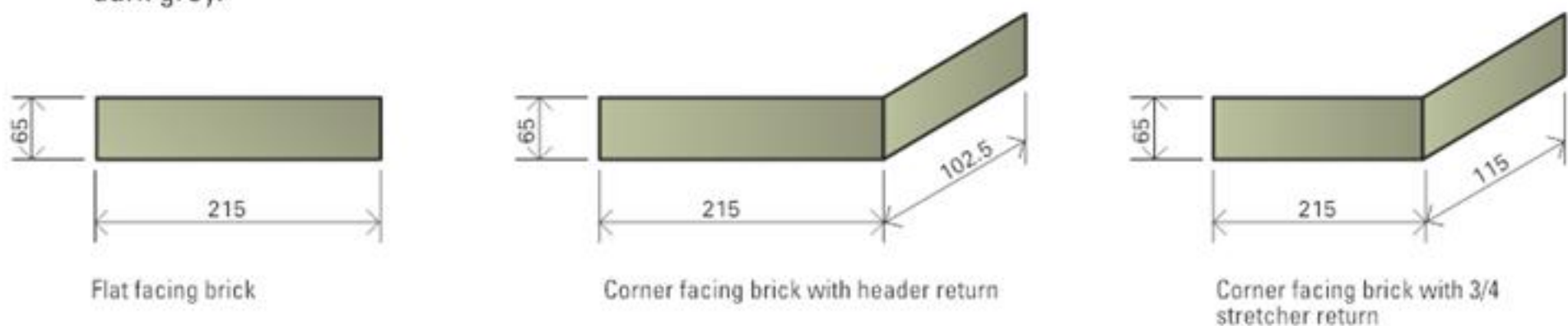
## Façade creativity

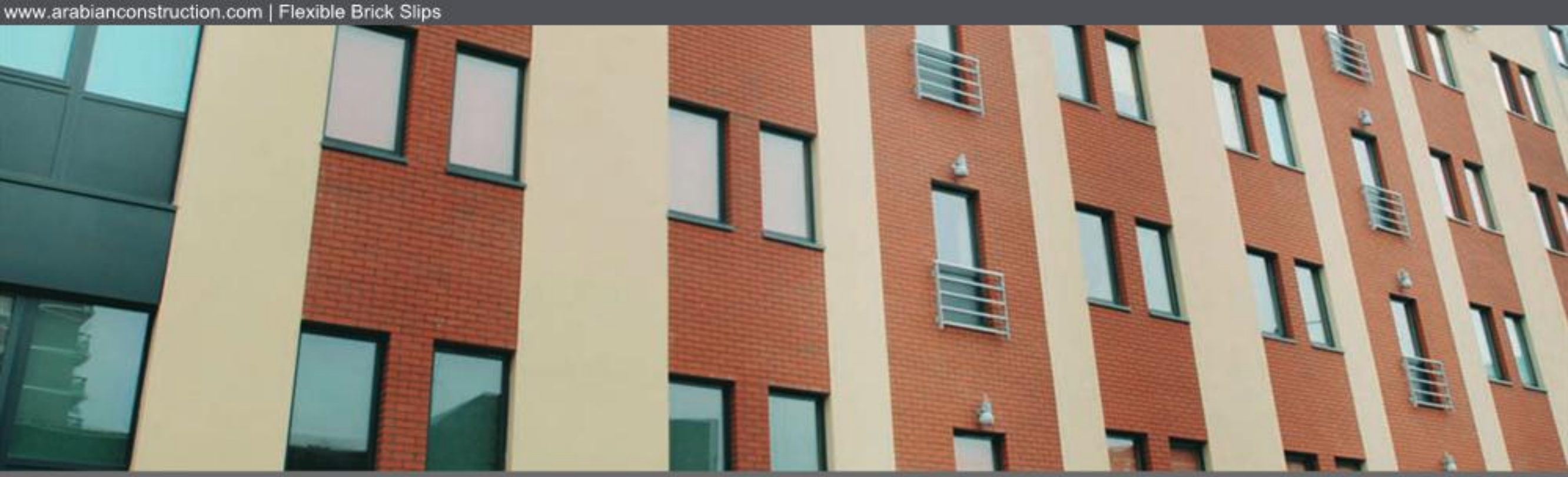


4

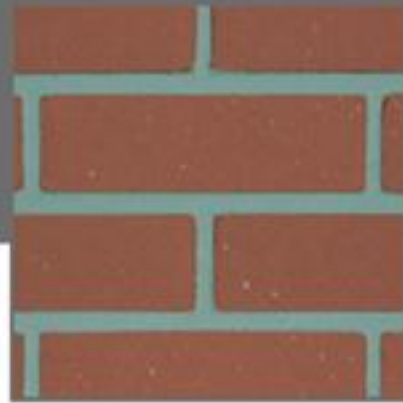
## Standard range of colours, textures and sizes

The brick slips are available in 11 different colours, in standard stretches, three-quarter and full-size pistols. alsecco also offer a brick colour matching systems to replicate most UK standard brick colours. Mortars are available in 3 shades – natural white, light grey and dark grey.





**Altweiss**



**Betley-Red**



**Cream-Buff**



**Foxfield**



**Hamburg**



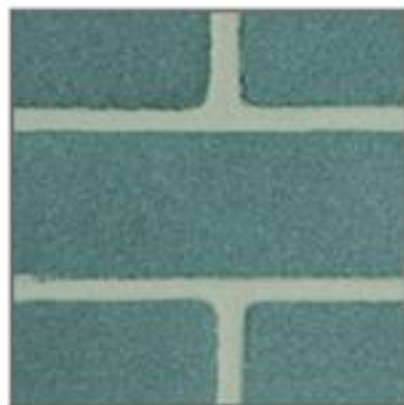
**Juist**



**Salisbury**



**Sandstone**



**Staffordshire-Blue**



**Swynnerton-Rustic**



**Walton-Red**



## Flexible and lightweight system



6

## Easy application

alsecco brick slips are easy to apply, just like wall tiles.

Apply a backing of adhesive to the substrate and comb through with a toothed trowel. Lay the brickslips in a pattern and press firmly into position by sliding them into place. The joints can then be tooled using a wet brush, with no need for additional pointing.



Applying the brick slips



Jointing



## The perfect solution

Located in the St George's district of Bristol and dating back to the late 1950s, Butler House was assessed by the local authority's project team as a prime opportunity to trial alsecco's innovative brick cladding system. This would avoid the need to seek planning permission and promise significant programme savings, since the new brick slip façade would replicate the existing brick work.

Already with a proven track record across Europe, alsecco's replica brickwork system offers a number of advantages including the flexibility of the individual slips and overall light weight.

After initially providing the local authority's Neighbourhood and Housing Services Department with product samples, alsecco produced 2m<sup>2</sup> sample panels on site using three different coloured mortars.

The building surveyor leading the project, Paul Jermy, commented, "Butler House features substantial areas of brick as well as the render panels which had become badly weathered and were losing their waterproofing

properties. Ingress of water was becoming a real problem and a permanent solution was required.

alsecco's insulated anti-crack render systems have proved very effective for us but changing to an all render appearance for Butler House would have required us to seek planning permission and so the ideal solution was to use alsecco's brick slips. alsecco provided small trial panels on an existing area of brickwork for us, the tenants and members of the council to examine; this led to the specification of the brick slips."

Paul Jermy added, "The other alternative would have been to apply one of the brick effect render treatments but such systems are inherently heavy, while the cementitious formulations require regular construction joints.

The alsecco system by contrast is light in weight as well as easy to set out and install. Neither are there any of the risks associated with using cassette systems to replicate brick. It has been a very successful project."





Scan for our website

**alsecco (UK) Ltd.**  
Whitebridge Way, Stone  
Staffordshire, ST15 8GH  
Tel: 01785 818998  
Fax: 01785 818144  
[www.alsecco.co.uk](http://www.alsecco.co.uk)



ARCHITECTURAL FAÇADES