



altro

the future is safer with altro

# THE SOURCE

Altro's definitive guide to sector issues

# HEALTHCARE



the future is safer with altro

altro

## Welcome to The Source:

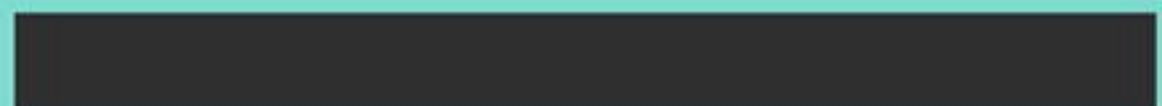
This is the complete Altro guide to responsibility, protecting your business and adding value on the key issues of legislation, safety, hygiene and sustainability. Inside, we have shared our knowledge so that you can make well-informed decisions on your specifications and stay one step ahead.

## Responsibility in the healthcare industry.

In this edition of The Source, you will find a guide to everything you need to know about specifying floors, walls, ceilings and doors in today's hospitals, clinics and care homes.

We have demonstrated the potential issues and regulations that Altro solutions can help you and your organisation overcome, and ultimately achieve a greater level of responsibility in an increasingly litigious world.

As the inventor of safety flooring, Altro have over 50 years' experience and are specialists in the area of patient care and food preparation areas. Our aim is to continually improve the performance and enhance the design of all our products, whether it is the slip resistance of safety flooring or the hygiene of wall cladding. All products are tried and tested in the most demanding of healthcare premises.





# altro

## THE ISSUES

Employers, organisations and specifiers have a duty of care to every employee, patient, resident and visitor within healthcare environments. With regulations becoming ever more demanding and the ever-present risk of litigation, it is vital to be able to provide and maintain a safe and hygienic environment.

## THE FACTS: SLIPS AND TRIPS

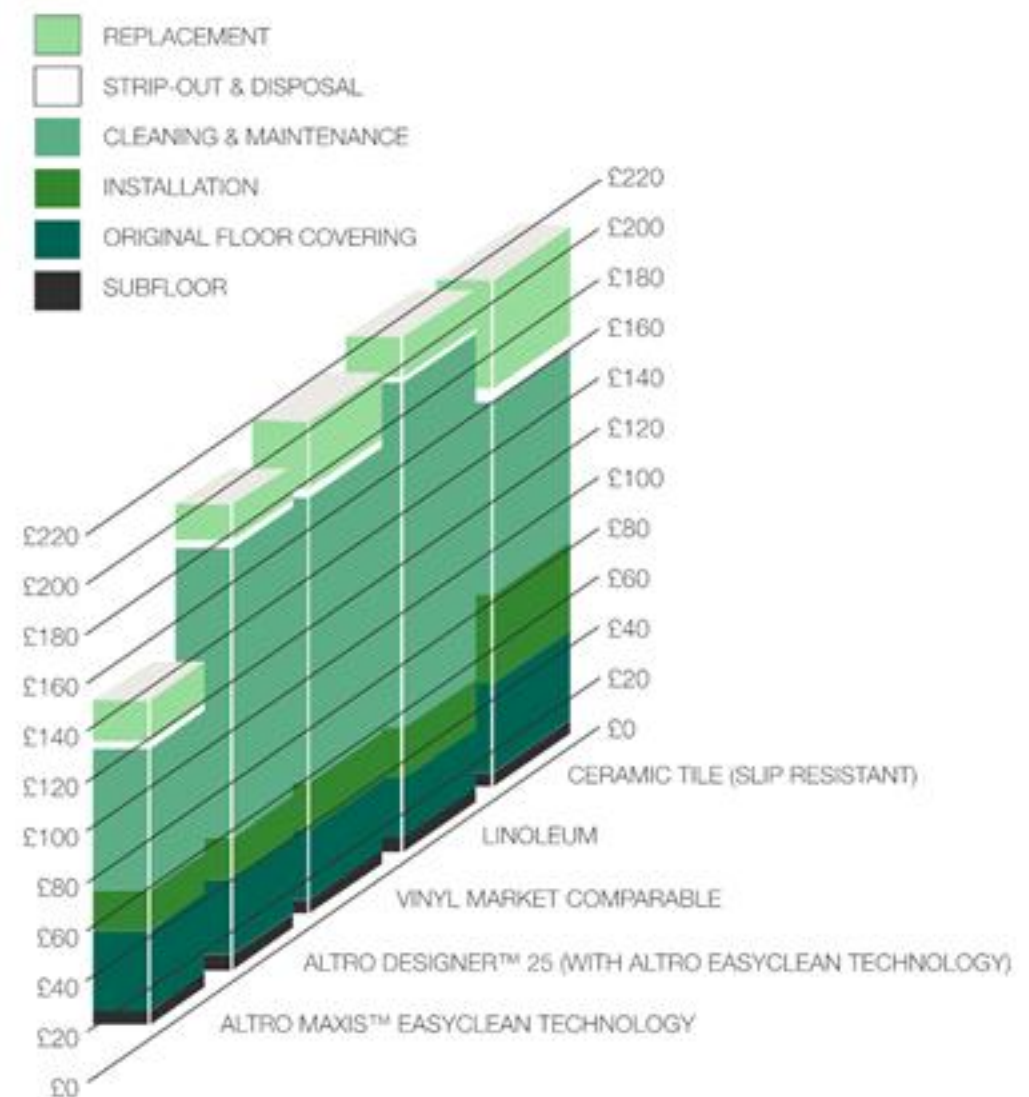
The European Commission's 'Campaign for a Safer EU' aims to reduce slip and trip accidents by 25% by 2012.

In the UK alone, 54% of all reported major accidents in the healthcare sector are caused by a slip or trip. Many injuries are of a serious nature, and the resulting civil claims are high, with vast sums paid out to injured parties.

Floor surface contamination is responsible for most slips and trips in healthcare establishments. Products that are not fit for purpose can be a cause. Altro's safety flooring range exhibits slip resistant properties even when wet, plus the embedded anti-slip layer offers slip resistance for the full lifetime of the product.

All Altro safety flooring exceeds the recommended minimum UK Health and Safety Executive (HSE) Slip Resistant Value (SRV) of 36.

## 30 year life cycle cost analysis





## THE FACTS: HYGIENE & INFECTION CONTROL

The World Health Organisation reports that the most frequent route of infection transmission in the healthcare industry is indirect contact. Clean surfaces remove the breeding-ground for most bacteria. A thorough cleaning and disinfection regime to combat the spread of infection can be supported by impervious and easy to clean surfaces.

It is important that equipment and surfaces should be designed for ease of cleaning and be made of materials that won't harbour micro bacterial growth.



### Altro safety floors

- Tests by independent research laboratory CCFRA Technology Limited confirm that Altro safety flooring inhibits the growth of MRSA and VRE
- Revolutionary Altro Easyclean Maxis™ Technology is independently proven to outperform other leading safety floors for cleanability
- All Altro safety flooring is unaffected by alcohol hand gels or chlorine packs used to disinfect the spillages of blood or body fluids

### Altro Whiterock™ cladding systems – wall cladding, ceilings and doorsets

- Altro offers flooring and walling solutions with surfaces that are easy to clean and have low dirt retention
- All Altro wall cladding includes Altrosan™, an integral bacteriostat that helps prevent the growth of bacteria
- Altro Whiterock wall cladding meets all current EU Directives on health and hygiene
- Altro's ceiling surfaces are smooth, impervious and easy to clean
- All Altro doorsets have smooth handles for easy cleaning and are able to withstand detergents and disinfectants



## THE FACTS: INCLUSIVE DESIGN

New building design and refurbishment projects in Europe are governed by regulations setting minimum legal standards for access and use of buildings. Within the context of these regulations, healthcare design should remain imaginative and encompass best practice to enhance the welfare of all healthcare personnel and patients.

The needs of all staff, patients and visitors including disabled people and those with limited mobility must be carefully considered at all stages of the design process.

### Disability Discrimination Act (DDA) Requirements

The aim is to enhance quality of life by enabling patients and residents to move freely around a building during their normal daily activities.

This can be achieved through:

- appropriate light reflectance value (LRV) contrast between floors, walls, doors and staircases
- clear signage

The amount of light reflected from surfaces is the main factor in determining a person's ability to identify different surfaces and room proximity. Every surface has a light reflectance value marked out of 100 points and to comply with the Disability Discrimination Act there should be at least a 30 point variance in LRV between adjacent surfaces.

### Walls and floors

Considered use of design and colour is important. The entire range of Altro safety flooring and Altro wall cladding has been measured for light reflectance values and figures are now available online at [www.altro.com](http://www.altro.com). The range of colours and finishes allows for a wide choice of design options, even for special requirements.

### Stairs

For reduced slip and trip risks on stairs, nosings must be a contrasting colour to the tread. Throughout the rest of the building contrasting handrails on stairs, in corridors and bathrooms will also improve navigation. Reflective finishes on stairs should be avoided.

### Doors

Doors and frames should be clearly distinguishable from adjacent surfaces. Altro doorsets are available in a wide range of colours to assist in this.

### Dementia

Units designed specifically for dementia care can maximise the quality of life and safety of sufferers as well as their families and carers. Principles which help compensate for disability, maximise independence, reinforce personal identity and enhance confidence are required.

Altro Suprema's solid colour safety flooring has been utilised for this application as it contributes towards minimising visual barriers.

Altro Whiterock wall cladding is the perfect complementary solution to Altro safety flooring for wetrooms, en suites etc and is available in a wide range of colours to facilitate contrast and finishes.





## THE FACTS: WEAR AND TEAR

Alcohol-based hand gels in common usage around hospital wards can in time corrode surfaces. This is not the case with Altro safety flooring and wall cladding.

Altro heavy duty flooring and wall cladding can withstand high usage, chemical attack\*, loading and daily knocks and scrapes. A hard-wearing Altro floor, wall or door covering will give many years of service, remaining safe and easy to maintain and continuing to retain appearance throughout. This avoids the need for regular replacement and therefore reduces downtime and long-term expense.

Altro floors, doors and walls are resilient and designed to resist the harshest treatment.

\*If in doubt, please contact Altro on  
+ 44 (0) 1462 707 600 for further information.



**+44 (0) 1462 707600** [www.altro.com](http://www.altro.com)



# altro

## SOLUTIONS OVERVIEW

Altro can supply cost-effective and ultra hygienic flooring, walling, ceilings and doorsets to the rigorous standards that hospitals, care homes and current health and safety regulations demand.

### From concept to completion of your project

#### Pre-installation

- Site visits
- Altro Samples Express service
- Project management from start to finish with all stakeholders – we will work with your term contractor and architects to save you time, hassle and money
- Altro and NBS specification writing
- Information on legislation
- A range of CPDs and issue based presentations to support decision-making
- Technical and product literature and detailing diagrams
- A wide range of case study reference sites and testimonials, plus the opportunity to visit our installations to see your chosen product in situ

#### During installation

- On site assistance and quality audit
- Technical hotline, Service Excellence Manager and local Sales Consultants
- Contact details for local flooring and walling installers for you to obtain competitive Altro installed prices
- Efficient delivery from a UK manufacturer with UK distribution outlets

#### Post-installation

- Post-installation slip testing and cleaning demonstrations
- Operations and maintenance packs to meet your CDM requirements
- Warranties and The Altro Assurance
- We ask for your feedback so we can make continuous improvement
- Joint PR and marketing opportunities



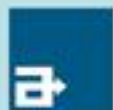


# altro

## PRODUCT SELECTION

AREA	Operating theatres	Treatment rooms & physiotherapy	Pharmacy, laboratory	HSDU sterilisation mortuary & bodystore	Disinfection & sterilisation units	Wards
Altro Maxis™ 25			•	•	•	•
Altro Suprema™ / Altro Timbersafe™ II	•	•			•	•
Altro Designer™ 25 / D25				•		
Altro Stronghold™ 30 / K30						
Altro Marine™ 20 / T20						
Altro Walkway™ 20 / VM20 / Altro XpressLay™		•				
Altro Whiterock™		•		•	•	•
Altro Whiterock Satins™		•		•	•	•
Altro Whiterock Illusions™ / Altro Whiterock Stone™						
Altro Whiterock Chameleon™ / Altro Whiterock Chameleon Art™						
Altro Whiterock Digiclad™						
Altro Whiterock™ Hygienic Doorsets	•	•	•	•	•	•
Altro Whiterock™ Hygienic Ceilings	•	•	•	•	•	•
Altro Whiterock Splashbacks™		•	•	•	•	•
AltroCrete™ PU range				•	•	
Altro SoloSafe™			•	•		
AltroScreed™ Quartz EP				•		
AltroCast™ / Altro TB + Cast™						
AltroStat™ SD	•					
AltroSmooth Chrysalis™ / AltroSmooth Synthesis™ AltroSmooth Intrinsic™ / AltroSmooth Ethos™	•		•		•	•

*Note: This table lists the range of Altro products which may be suitable for specific areas and are guidelines only as local regulations may differ. Please consult your local Altro representative before specification*







Outpatients	A&E	Hospital streets, corridors, ramps, stairs & lifts	Reception, entrance foyer	Waiting rooms, offices & consultation rooms	Bathrooms, showers & toilets	Communal areas	Bedrooms	Staff changing rooms	Central kitchens, laundry	Small-medium kitchens, cafeterias, coffee shops & restaurants
	•	•				•		•		•
•	•	•	•	•	•	•	•	•		•
		•								•
					•				•	
				•				•		•
			•		•					
			•		•					
			•		•					
•			•	•						
•			•	•						
•		•		•	•	•	•	•	•	•
•	•	•	•	•	•	•	•	•	•	•
•	•			•	•		•	•	•	•
								•		•
	•	•	•		•	•		•		•
					•					•
		•								

BY SPECIFYING ALTRO YOU CAN BE CONFIDENT IN YOUR CHOICE. FOR FURTHER PRODUCT DETAILS, TO ORDER SAMPLES OR ARRANGE AN ON-SITE CONSULTATION, CALL TODAY ON

**+44 (0) 1462 707600**

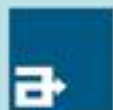
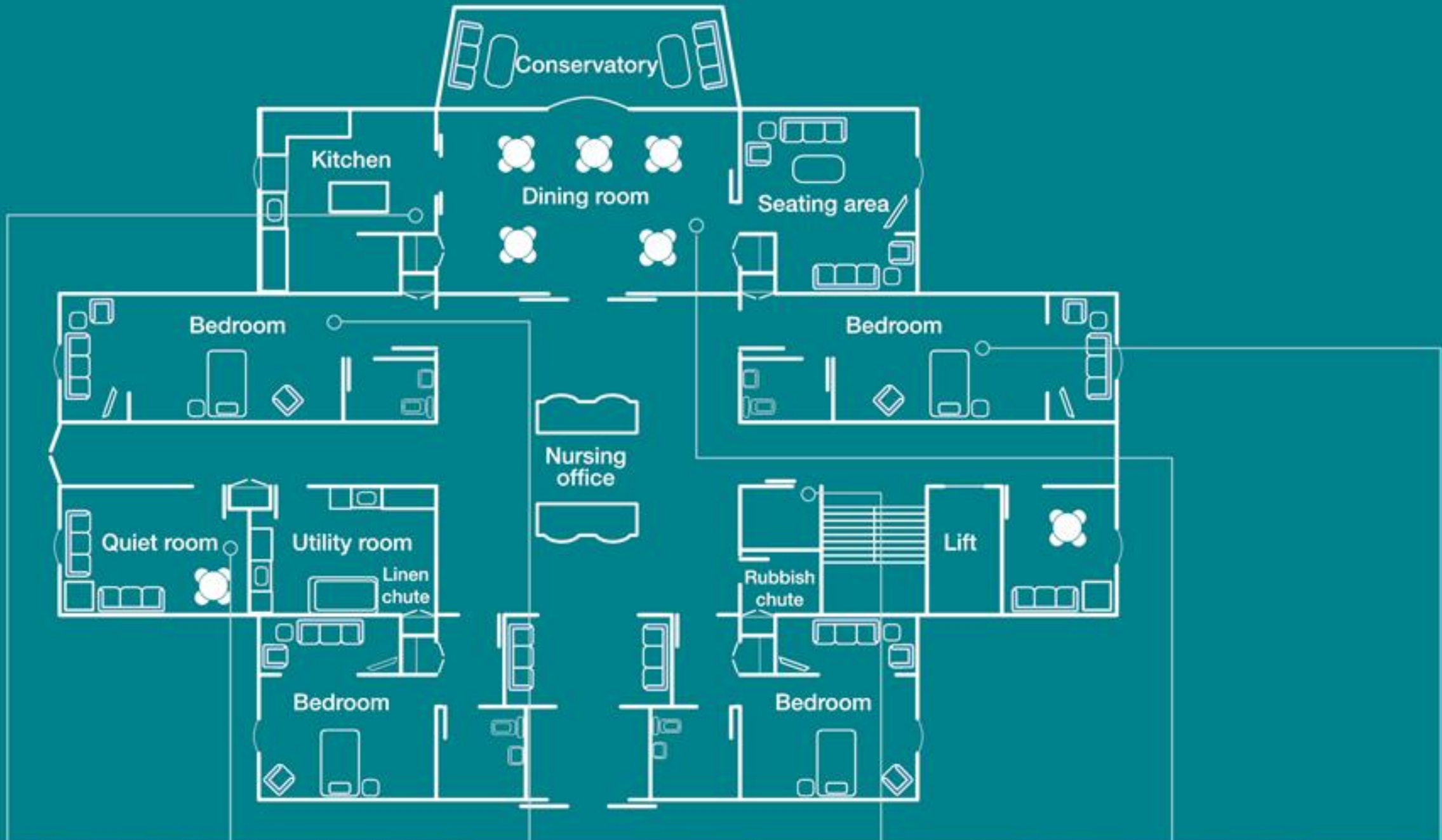
OR VISIT [www.altro.com](http://www.altro.com)





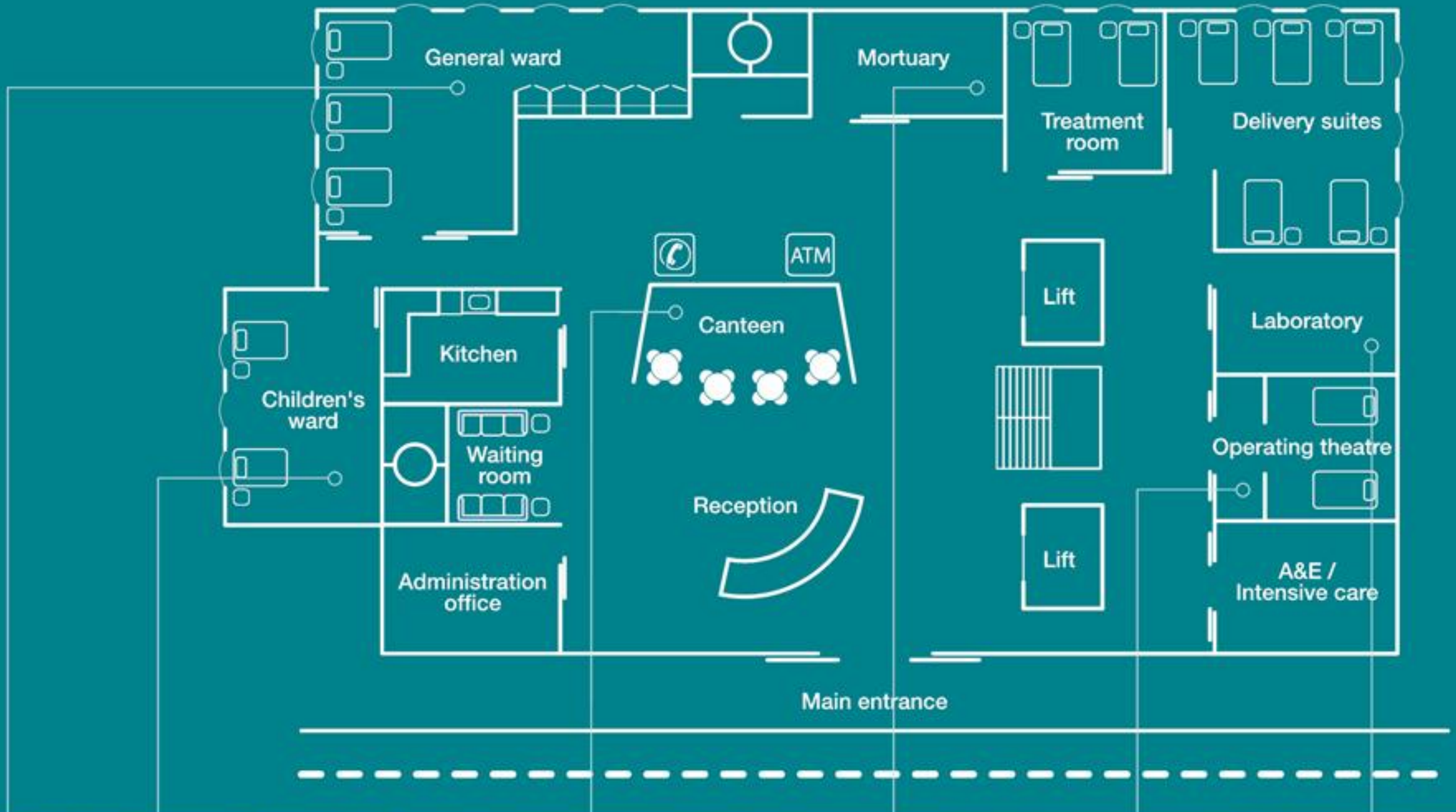
# altro FLOOR PLANS

Care Home





# Hospital



+44 (0) 1462 707600 [www.altro.com](http://www.altro.com)





# altro



## Case Studies

Location: **Southend University Hospital**  
Product: **Altro Whiterock™**

“Altro Whiterock is an easy material to work with which meant that when the panels arrived printed from Altro, our contractor was able to install them quickly. The finished result is impressive, and will certainly help us to raise awareness about this issue.”

David Cowling,  
Project Manager



Location: **Springburn Health Centre**  
Product: **Altro Whiterock Satins™**

“The brief was to provide splashbacks for the work surfaces and sinks used by our staff all day every day so it was important that the product needed low maintenance. We didn’t want to go with tiles as we know bacteria can breed in the grout.”

Gerry Groome,  
Estates Manager





# Hospital and Care Home Specification Considerations

## Flooring

- Drainage/existing substrate
- Type of equipment and wheeled furniture
- Proposed cleaning and disinfection regime
- Ground floor or upper floor location
- Stairs or ramps
- Activities in different areas
- Spillages of food, bodily fluids or chemicals
- Hand gel facilities
- Potential for staining of floors
- Floor signage/colour coding requirement
- Contrasting colours required for inclusive design
- Time available for installation
- Colour, choice, contrast and appearance
- Heavy, shoe or barefoot traffic

## Walls

- Existing substrate/wall finish
- Extra impact resistance required
- Pipes, vents, ducts, wall furniture, window and door frames
- Colour/colour contrast, finish requirement
- Need for wall signage and colour coding
- Hygiene requirement
- Proposed cleaning or disinfection regime
- Time available for installation
- Coved skirting to prevent corners, for hygiene and easy cleaning

## Ceilings & doors

- Vision panels in doors
- Open/shut doors in corridors
- Need for colour contrast on doors & frames or walls & ceilings
- Natural, direct or surface fixed lighting
- Ceiling access
- Cleaning regime
- Time available for installation



+44 (0) 1462 707600 [www.altro.com](http://www.altro.com)





# THE ENVIRONMENT

## BRE "A+" rating

Altro have consistently led the way in formulating and designing sustainable safety flooring, utilising advanced manufacturing processes. Our safety flooring products achieve the highest possible BRE Global environmental rating of A+ in a Healthcare application, confirming what the industry has always known to be true that, when viewed over their entire life cycle, PVC based safety flooring products can offer the best environmental credentials, whilst maintaining a high degree of slip resistance and durability.

A+ BRE Generic Green Guide Rating for Safety Flooring, full details available at [www.thegreenguide.org.uk](http://www.thegreenguide.org.uk)

## Clean environments matter

- Altro have reduced water consumption by 99% over 10 years
- Altro recycle all production waste PVC
- Altro have reduced waste to landfill by over 70% since 2007
- Altro safety flooring is 100% recyclable
- Altro safety flooring uses 100% recyclable packaging
- Altro recycles traditional safety flooring into new safety flooring
- Altro are the first manufacturer to do so
- Products with Altro Easyclean Technology™ need fewer chemicals and less water to maintain them over their life span, thereby reducing their carbon footprint

## 6 Steps to Sustainability

Altro are passionate about minimising the impact our products and processes have on the environment. Discover more about our holistic approach to sustainability by visiting [www.altro6steps.com](http://www.altro6steps.com)

## Recofloor

Altro are one of two of the country's leading flooring manufacturers, who have launched the UK's first vinyl flooring recycling take-back scheme. Recofloor will increase the recycling of waste vinyl flooring in the UK. Through the scheme, safety flooring and smooth vinyl offcuts from the installation process will be recycled back into new flooring. Unique in our safety flooring recycling capabilities, Altro collect and recycle all the safety flooring for Recofloor, irrespective of manufacturer. Uplifted, or end-of-life material, will be used in the manufacture of traffic calming products, such as traffic cone and road barrier bases.

## Recowall

Recowall™ is the new Altro Whiterock™ collection and recycling scheme launched in April 2010 with VEKA UK.

Clean off-cuts of Whiterock are collected free from dedicated collection sites around the UK and sent to Germany to be recycled into other PVC products, reducing waste sent to landfill.





# altro SOLUTIONS

## ALTRO SAFETY FLOORING

The ultimate resilient flooring that meets both safety and hygiene standards. Altro's extensive range of safety flooring offers unrivalled slip resistance, is impervious and contains integral bacteriostat which helps protect against bacterial growth and contamination. The sheet material is hot welded and coved to provide a seamless, watertight floor that can be easily maintained and provides high durability and underfoot comfort. Specialist flooring solutions for different problem areas (including operating theatres, laboratories, hospital corridors, treatment rooms and wet areas) make Altro the perfect solution for healthcare.

## Benefits

### Hygienic

- Seamless and impervious
- Features Altrosan™, an integral bacteriostat
- Coved installations with rounded corners give bacteria nowhere to hide
- Withstands chemicals and chlorine packs
- The hygienic alternative to tiles or carpets
- Chemical resistant to alcohol based hand wash gels

### Enhances the environment

- Safety flooring range to suit different requirements
- Modern safety flooring for front of house, combining safety and design
- Comfort underfoot
- Sound redemptive properties
- Can accommodate signage inlays and act as a navigational aid
- Light reflectance values (LRV) provided to assist inclusive design
- Lower floor to wall coving joint for inclusive design
- Minimal installation downtime



### Slips & trips

- Slip resistant even when wet, dusty or greasy
- Altro's safety flooring is slip resistant for life
- Exceeds the HSE 36-point safety standard (UK)

### Easy to clean

- Altro Easyclean Maxis™ Technology for ease of cleaning
- Altro compatible drainage systems
- Coved installations for easy cleaning

### Long-lasting

- Impact, chemical and spillage resistant
- 2 – 4mm resilient options to withstand intensive usage
- Offers flexibility to accommodate some floor movement
- Comes with a 7, 10, 12 or 15 year warranty
- Proven durability, installations that have stood the test of time



EN14041  
0120  
GB06-72664

Manufactured by  
Altro Ltd, Works Road  
Letchworth, Garden City SG6 1HR  
United Kingdom





## Product Details

### Altro Suprema™, & Altro Timbersafe™ II

- Modern range of slip resistant 2mm safety flooring in a range of design finishes for front of house applications or where traditional sparkle is undesirable
- Impervious and hygienic safety flooring with Altro Maxis™ EasyClean Technology
- Impact resistant
- Comfortable underfoot
- Lifelong slip resistance

### Altro Suprema™

- Even colouring, ideal for care homes and dementia care as provides an understated, non-sparkle finish

### Altro Timbersafe™ II

- Traditional, homely wood finish, without compromising slip resistance

### Altro Stronghold™ 30

- Heavy duty 3mm kitchen grade safety flooring
- Ideal for assisted bathrooms
- For more details see our Kitchen Guide online at [www.altro.com](http://www.altro.com)

### Altro Maxis™ 25

- Heavy duty 2.5mm safety flooring
- Enhances chemical resistance
- Ideally suited to circulation areas and areas prone to regular spillages

### Altro Walkway™ 20

- Popular 2mm safety flooring for excellent durability in a wide range of locations where health and safety standards dictate underfoot safety

### Altro Designer™ 25

- Hard-wearing 2.5mm thick safety flooring. Combines silicon carbide at surface level and aluminium trioxide throughout for long-term performance, offering excellent durability and slip resistance
- Altro Designer 25 is available in a wide range of colours for increased design potential

### Altro Marine™ 20

- Textured finish 2mm safety flooring, specially designed for wet areas, bare feet or soft soled footwear
- Ideal for showers, hydrotherapy rooms and other wet areas requiring slip resistance
- Integral bacteriostat

### Altro XpressLay™

- Adhesive-free, no damp-proof membrane required
- Direct fitting at 97% relative humidity
- Same day welding
- Immediate walking on floor
- Economical, fast, hassle-free installation
- Available in 17 colours, plain and chipped

### Perfect partners

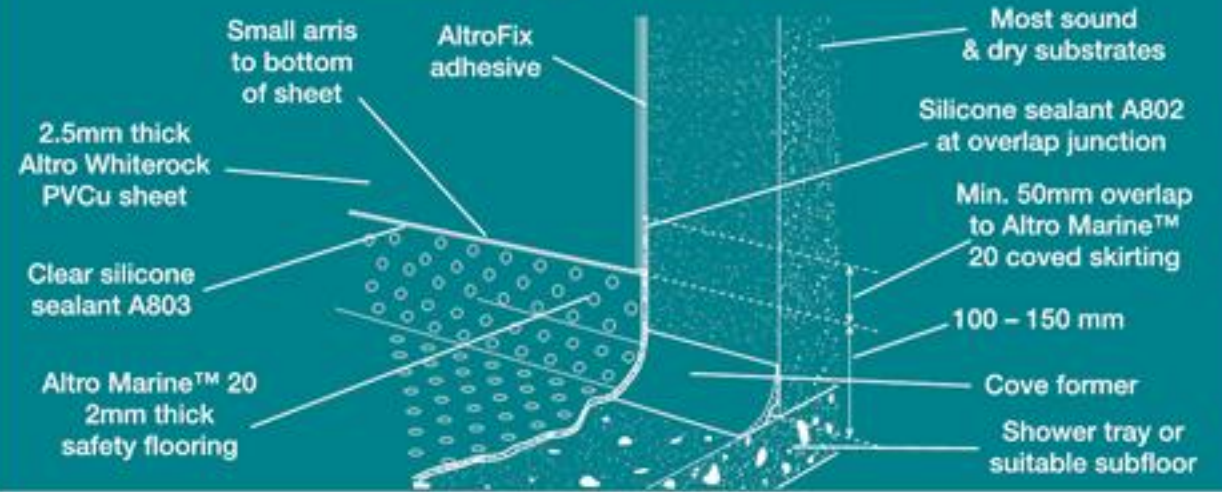
A completely watertight system for wet areas can be achieved using a combination of Altro Marine™ 20 safety flooring and Altro Whiterock™. Together they create a seamless join between floor and wall, giving dirt and bacteria nowhere to hide.







### Altro Whiterock™ fits to Altro Marine™ 20 safety flooring shower tray for a watertight system



### Altro sheet flooring with clamping drain outlet creates a hygienic and waterproof installation



FOR FURTHER PRODUCT DETAILS, TO ORDER SAMPLES OR ARRANGE AN ON-SITE CONSULTATION, CALL TODAY ON

**+44 (0) 1462 707600**

OR VISIT [www.altro.com](http://www.altro.com)







## Case Studies

Location: **Bangor Hospital**

Product: **Altro Suprema™**

"We chose Altro Suprema as it provides an easy to maintain and hygienic finish for our flooring, which is essential when cleaning and hygiene in hospitals are in the spotlight following MRSA 'superbug' stories in the media. Safety flooring is now a practical and attractive alternative to other floor coverings and makes it far easier for us to maintain our high standards of cleanliness at the hospital. We will certainly consider using Altro floor coverings in other areas of the building and Trust premises."

Eric Bayliss,  
Estates Officer, Ysbyty Gwynedd, Bangor



Location: **Wollomoos Care Home**

Product: **Altro Maxis™ 25**

"Replacing steps with ramps encourages easy circulation for patients in the Wollomoos care home. Apart from the safety aspect on ramps, hygiene is also very important. The cleanability and ongoing cleaning costs were the deciding factor for using Altro."

Franz Schieri,  
Manager, psychiatric care home, Wollomoos





# altro SOLUTIONS

## ALTRO WHITEROCK™ SYSTEMS

A durable hygienic alternative to paint or walling tiles, Altro Whiterock PVCu walling systems provide a decorative, hygienic solution. Altro Whiterock provides a watertight, seamless surface that is impervious and can be hygienically finished around fixtures and fittings. The fully bonded system includes thermoformed pencil rounded corners giving bacteria nowhere to hide and making it easy to clean and disinfect. Its high durability and low maintenance cost make it an excellent long-term investment.

### Benefits

#### Easy to clean

- The grout free alternative
- Can be hosed, wiped and pressure washed
- Not damaged by detergent and disinfectant
- Sealed transitions between wall, floor and ceiling

#### Enhances the working environment

- Gives areas fresh appeal through wide choice of colours and finishes
- Minimal installation downtime
- Colour matched joints and transitions
- Can accommodate signage
- Light reflectance values (LRV) for inclusive design
- Wall cladding enables hand wash and drying facilities to be mounted to the wall as it won't crack when drilled into
- An overlap of wall and floor can visually lower a coving, helping to improve navigation around the building for the visually impaired, and reduce confusion for patients in dementia care homes by not distorting the perspective of rooms

Visit us in-situ at VTV Showroom, Manchester



### Hygienic

- Smooth and impervious
- Tough to crack, withstands trolley and furniture knocks
- Fully bonded to substrates leaving no voids for bacterial growth
- Features Altrosan™, an integral bacteriostat
- Thermoformed corners for added hygiene and cleaning
- Exclusive, revolutionary Altro Whiterock FlexiJoint™ system for sealed joints
- Watertight fit around vents

### Long-lasting

- Highly durable and virtually maintenance free, therefore cost-effective
- Impact resistant
- Specialist Premier Installer Network, see online for details
- 20 year warranty



## Product Details

### Altro Whiterock™

- High quality hygienic PVCu polymer meets all EU health and hygiene regulations
- No grout, seamless solution so dirt has nowhere to hide

### Altro Whiterock Satins™

- Single colour finish, available in a wide range of matt colours
- Complemented by coloured silicone sealants and extruded PVCu trims
- LRV ratings for visual contrast included

### Altro Whiterock Illusions™ & Altro Whiterock Stone™

- A patterned or natural stone effect design option
- Range of matching trims to provide a seamless effect

### Altro Whiterock Chameleon™

- Colours and finishes offering durability, cleanliness and impressive contemporary designs
- Altro Whiterock Chameleon is available in a range of high gloss colourful design options

### Altro Whiterock Digiclad™

- Altro Whiterock Digiclad offers a bespoke digital print option

### Altro Whiterock™ Hygienic Doorsets

- Bespoke service to meet different size and specification requirements
- Choice of colours, vision panels and door furniture
- 2.5mm Altro Whiterock on face, sides and edges
- Leading edges thermoformed for smooth corners

### Altro Whiterock™ Hygienic Ceilings

- Smooth, hard, impervious surface, ideal for theatres and isolation rooms
- Flush fitted, with lighting, access, air grills and sprinklers easily added
- Easy to clean and can be hosed down
- Lightweight and low maintenance
- Twin wall construction to reduce condensation

### Altro Whiterock Splashbacks™

- All the physical properties of Altro Whiterock
- A range of colours to enable LRV contrast with fixtures and fittings
- Altro Whiterock Splashback kits in bespoke sizes

### Altro Whiterock Chameleon Art™

- Choose from 120 high design options
- Create stunning feature walls for reception and meeting areas, wards, visitor areas, corridors etc plus other environments where calm is desirable

#### Hand wash station

Altro Whiterock™ provides an ideal backing for hand wash stations. It includes Altrosan bacteriostat for enhanced hygiene, is impervious and resistant to alcohol-based hand wash solutions.



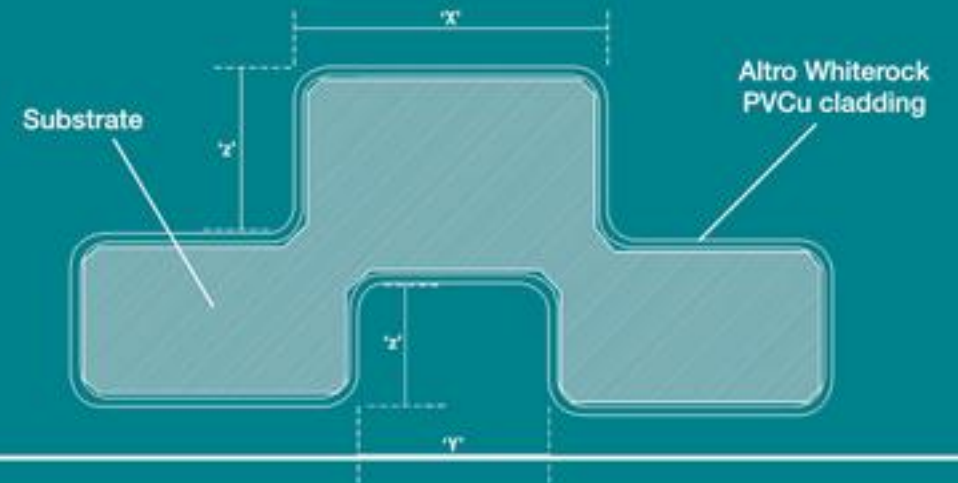




### Self-coved with cove former & transition strip to wall cladding



### Thermoformed pencil corners provide hygienic, easy to clean wall surfaces



FOR FURTHER PRODUCT DETAILS, TO ORDER SAMPLES OR ARRANGE AN ON-SITE CONSULTATION, CALL TODAY ON

**+44 (0) 1462 707600**

OR VISIT [www.altro.com](http://www.altro.com)







## Case Studies

Location: **Colchester General Hospital**

Product: **Altro Whiterock™  
& AltroSmooth Chrysalis™**

“It’s really important to us that we do everything we can to keep cleanliness levels up to a high standard and this was a key factor in choosing new surfaces and doors for our pharmaceutical areas. We needed coverings that would enable us to carry out our work, knowing that a high level of hygiene and cleanliness is being maintained. Altro’s products hit the mark on this.”

Monica Douch,  
Quality Assurance Pharmacist



Location: **Warrington General Hospital**

Product: **Altro Suprema™ & Altro  
Whiterock Satins™**

“We have been specifying Altro products at Warrington General Hospital for a number of years now. Refurbishment is an ongoing process, and our plan is to continue using Altro products as they offer us a consistent solution which we know meets the needs of the hospital.”

Lee Bushell,  
Capital Projects Manager  
for North Cheshire Hospital NHS Trust





# altro SOLUTIONS

## ALTRO RESINS

The toughest floor for functional and decorative healthcare environments. Resin seamless floor finishes are perfect for the most demanding areas within healthcare environments. Where a floor is required to withstand high temperatures, impact, heavy abrasion and high-point loading whilst providing safety underfoot, resin floor finishes will provide optimum service.

Suitable for functional areas such as main kitchens, HSDU sterilisation and mortuaries, to more decorative areas such as ward bathrooms. Building upon many years of experience in these environments, Altro have developed resin floor finishes to be hygienic, slip resistant, easy to clean and therefore low maintenance, which when combined with the longest warranties in the industry, make them cost-effective. To provide additional peace of mind, an anti-microbial bacteriostat can also be provided free of charge.

## Benefits

### Hygienic

- Seamless and impervious
- Easy to clean
- Zero water absorption (PU)
- Optional bacteriostat
- Independently performance-tested

### Slip resistant

- Texture throughout reduces the risk of slips and trips
- Safety for staff and patients in potentially dangerous areas
- Tailored surface texture to meet your specification

### Enhances the working environment

- Functional and decorative systems available



### Long-lasting

- Highly durable
- Withstands significant heat and cold
- Impact and chemical resistant
- 6 – 15 year warranties as standard

### Installation features

- Easy to repair if required
- Self-coveable
- Can be laid to falls
- Compatible drainage systems available
- Minimal installation downtime options





All products featured can be laid to falls

## Main kitchens & CPU production areas, HSDU sterilisation & decontamination

### AltroCrete PU™

- Low potential for slips
- From 5mm thickness for economy
- 8 - 9mm thickness for high temperature tolerance from -40°C to +120°C
- Easy to clean, seamless and impervious
- High impact and abrasion resistance
- Excellent chemical resistance
- Minimal installation downtime option
- Independently tested as taint-free installation

## Shower areas, Sluice rooms, Ward bathrooms & WCs

### AltroCast™ / Altro TB + Cast™

- Extremely low potential for slips
- 1.25mm – 4.5mm thickness options
- Available in multi-layer coating system or epoxy screed options
- Decorative or single colour options available

## Operating theatres and Computer rooms

### AltroStat™ SD

- 3mm static-dissipative epoxy resin floor
- Easy to clean, seamless, impervious and hygienic
- Provides safe conditions for electronically sensitive environments

## Product Details

## Light duty kitchens & Pathology labs

### Altro SoloSafe™

- Low slip risk option
- 5mm thickness
- Easy to clean, seamless and impervious
- Decorative
- Economical, due to reduced installation time
- Independently tested as taint-free installation

## Mortuaries

### AltroCrete PU™ range

- Heavy duty 2 – 9mm textured floor finish for areas of potential spillage or exposure to chemicals, impact or abrasion
- The Altro PU range combines great durability with standard or Fast Track options to reduce downtime
- Outstanding protection against organic acid attack
- Independently tested as taint-free installation
- Excellent hygienic performance
- Smooth or textured finish options

### Altro SoloSafe™

- Low potential for slips
- 5mm thickness
- Decorative finish
- Economical, due to reduced installation time

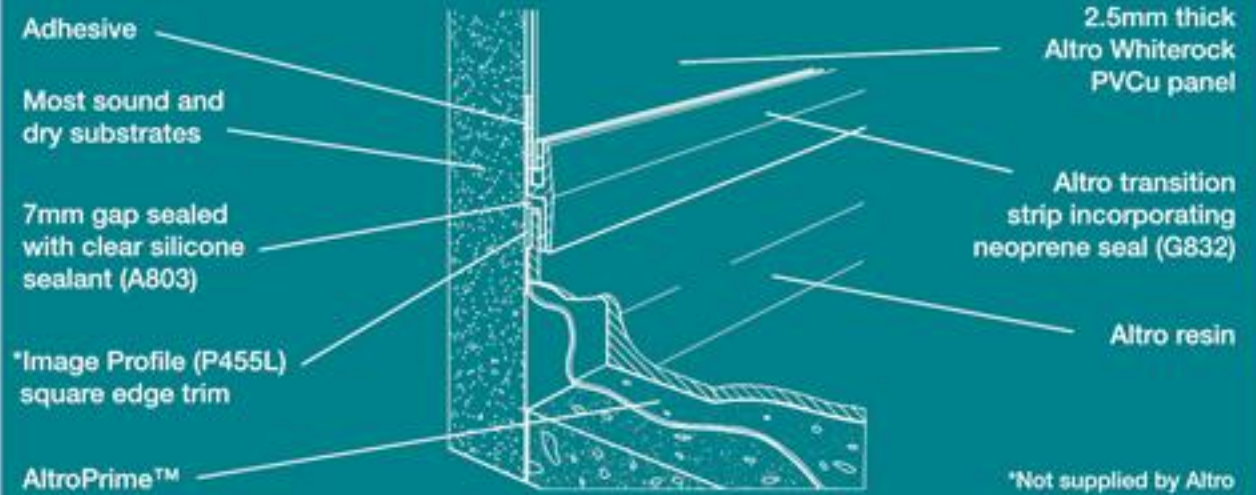
### AltroScreed™ Quartz EP

- Seamless and impervious
- Good impact and abrasion resistance
- Decorative finish, large multi-colour range available

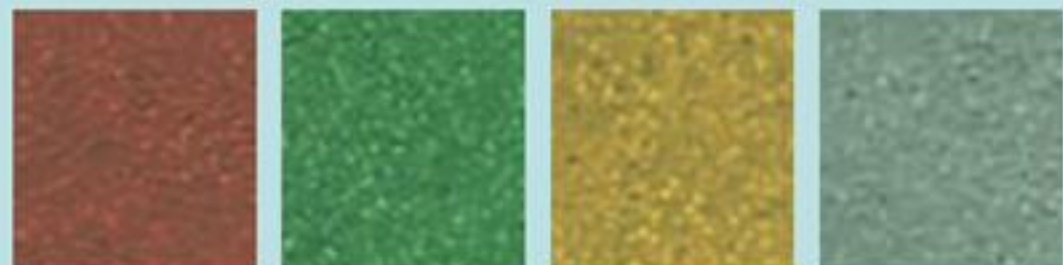
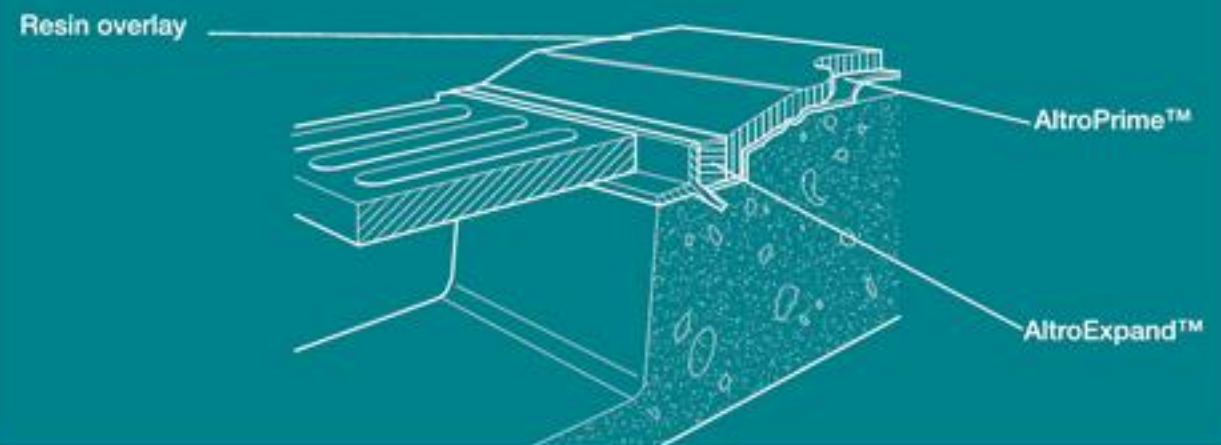




### Altro resin cove detail – Altro Whiterock™ overlap transition



### Altro resin poured trench drain transition



FOR FURTHER PRODUCT DETAILS, TO ORDER SAMPLES OR ARRANGE AN ON-SITE CONSULTATION, CALL TODAY ON

**+44 (0) 1462 707600**

OR VISIT [www.altro.com](http://www.altro.com)







## Case Studies

Location: **Dumfries and Galloway  
Hospital, Scotland**

Product: **AltroProof™ Surface Damp Proof  
Membrane and AltroScreed™ Quartz EP**

“AltroProof provided the necessary damp proofing to get the area back in use quickly, otherwise we would have had to wait several weeks for the subfloor to dry sufficiently to allow us to install the Altro resin surface. By choosing the Altro system, we also received the assurance of one six-year guarantee to cover both products.”

**Brian Conchie,**  
Estates Development Officer



Location: **West Cumberland Hospital,  
Whitehaven**

Product: **AltroScreed™ Quartz EP**

“We looked at other new units in hospitals and studied the range of equipment available before choosing what we thought was best, and now we probably have the most advanced mortuary of its type in the country. The floor is ideal and the light, attractive colour helps brighten the area and enhances working conditions.”

**William Chapman,**  
Senior Pathology Technician





# altro SOLUTIONS

## ALTROSMOOTH™ FLOORING

The AltroSmooth flooring ranges are most suitable for areas where the likelihood of spillages is low including offices or wards. They can be welded to provide a seamless, hygienic finish, which is easy to clean and maintain. AltroSmooths are hard-wearing and low maintenance, plus for areas where aesthetics are a priority, a wide range of attractive natural or decorative finishes is available.

### Benefits

#### Easy to clean

- Factory finish PU & PUR protection
- Can be coved for ease of cleaning

#### Enhances the working environment

- Choice of decorative finishes
- Appearance retention
- Hard-wearing
- Design and cut options for flexibility of design

#### Hygienic

- Seamless hygienic surface





## Product Details

### AltroSmooth Ethos™

- Sheet flooring with timber appearance
- 12 finish options
- Seamless hygienic surface
- Excellent appearance retention
- Low maintenance
- Factory finish PU coating

### AltroSmooth Synthesis™

- Hard-wearing flooring
- Available in 14 colours, with translucent chip effect
- Homogeneous
- Excellent appearance retention
- Low maintenance
- Factory finish PUR coating

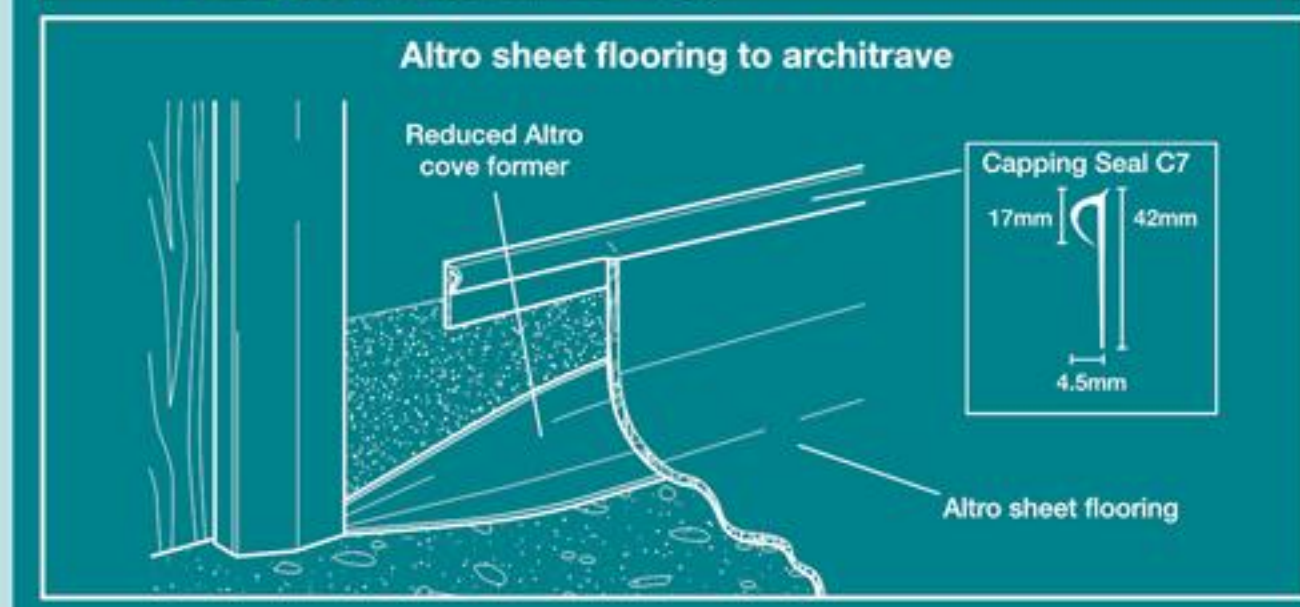
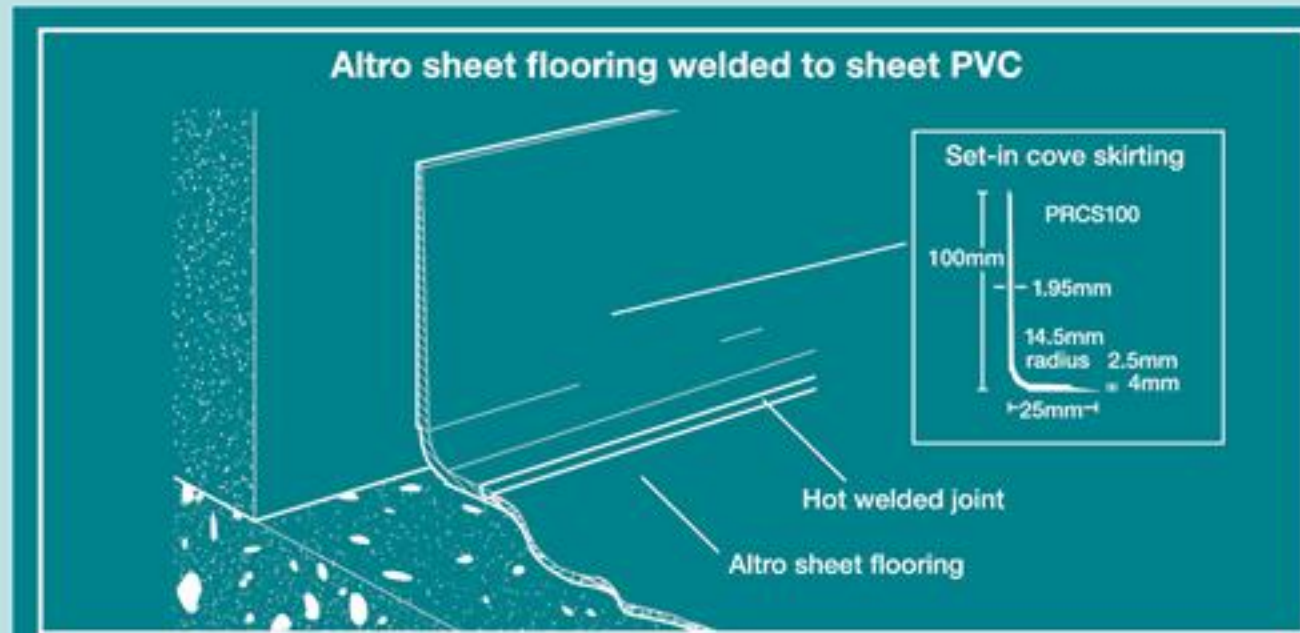
### AltroSmooth Chrysalis™

- Subtle abstract effect
- Available in 16 finishes
- Homogeneous
- Hard-wearing
- Low maintenance
- Factory finish PUR coating

### AltroSmooth Intrinsic™

- Natural designs in a selection of 12 contemporary colours
- Homogeneous
- Hard-wearing
- Low maintenance
- Factory finish PU coating





FOR FURTHER PRODUCT DETAILS, TO ORDER SAMPLES OR ARRANGE AN ON-SITE CONSULTATION, CALL TODAY ON

**+44 (0) 1462 707600**

OR VISIT [www.altro.com](http://www.altro.com)







## Case Studies

Location: **Lister Hospital**

Product: **AltroSmooth Chrysalis™**

“Altro is a tried and trusted interior surfaces provider for us, as its products have been in use throughout the Lister Hospital for nearly 12 years now. [AltroSmooth] Chrysalis has always proven to be a highly attractive, hard-wearing floor covering that’s durable and easy to clean, so we knew the product would be ideal for the Bramble Suite.”

**Chris King,**  
East & North Hertfordshire NHS Trust



Location: **The Junction**

Product: **AltroSmooth Ethos™**

“I am delighted to say that not only has Altro provided practical solutions but also all the products are of the highest standard and pleasing to the eye. Tiled areas are just not practical for The Junction due to the vulnerable nature of the children and I was really pleased with the vast range of alternative floors and walls, which Altro could offer. The end product is fantastic and both staff and the children are delighted.”

**Roz Smithson,**  
Project Manager







altro

the future is safer with altro



Altro, the future is safer with altro, AltroSmooth Ethos, AltroSmooth Synthesis, AltroSmooth Chrysalis, AltroSmooth Intrinsic, Altro Stronghold 30, Altro Atlas 40, Altro Designer 25, Altro Walkway 20, Altro Classic 25, Altro Marine 20, Altro Maxis, Altro Suprema, Altro Timbersafe II, Altro XpressLay, Altro Marine 20, Altro Impressionist 20, Altro Whiterock Splashback, Altro Whiterock Digiclad, Altro Whiterock Satins, Altro Chameleon Art, Altro Whiterock Illusions, Altro Whiterock Stone, Altro Whiterock, Altro Whiterock Chameleon, Altro Whiterock FlexiJoint, AltroCast, Altro TB + Cast, Altro SoloSafe, AltroStat SD and AltroCrete PU are all trademarks of Altro Limited.