



Amwell

Washrooms from concept to completion

Uniclass L2226
CI/SIB
(22.3) X

August 2011



Contents

We manufacture
We supply
We supply and install



Supply only



Supply and install

Amwell – what you can expect 02 – 06

Cubicle ranges 07 – 41

Minima	08	Impact	26
Truline	12	Axis	28
Urban	14	Sylan	30
Coolite	16	Washrooms for	
Linea	18	education	32
Splash	20	48hr Washroom	41
Ultima	24		

Aqua ranges 42 – 47

Aqualine changing cubicles	42
Aquabench	44
Aquasafe lockers	46

Duct panelling 48

Vanities 50 – 54

Accessories 55 – 57

Technical support 58 – 64

Washrooms from concept to completion

Amwell is different. We offer a unique combination of distinctive, original washroom products. Plus a service that can take your project from drawing board to final installation.

We call it washrooms from concept to completion.



Service and expertise. What you can expect from Amwell starting on [page 2](#)



Exceptional cubicle designs starting on [page 7](#)



Innovative range of children's cubicles, combining fun and safety starting on [page 32](#)

www.amwell-systems.com

Concept to completion

What can you expect?

In-depth professional and responsive support at every stage.

With over 30 years experience Amwell are the UK's leading manufacturer and installer of washroom cubicle and panelling systems.

Starting at specification our experienced Area Managers can advise you on suitable products, visit you at your premises and prepare RIBA NBS specifications for you. Our internal sales team can assist you with colour and product samples and provide general guidance.

Once you've chosen your Amwell washroom and decided on your service option we will supply a detailed quotation.

Our Estimators are happy to discuss any queries you have on selected products and advise on options to help meet your project budget.

Our service options are detailed over the following pages. As well as a supply only service we offer a comprehensive and professional supply and install package. All fitters are CSCS registered and are totally familiar with Amwell products. It is our responsibility to ensure your washroom is fitted perfectly.

RIBA CPD Presentations
We are happy to present our RIBA approved CPD presentation - Throwing Light on Washroom Specification - at your premises.

Please call 01763 276210.



We have extensive facilities on our website to make specification as easy as possible, including our on-line specification tool Easy Spec that converts your chosen requirements into a National Building Specification (NBS) at the click of a button.

CAD blocks and NBS specifications are available to download from our website.



Select your colours online and see how the colour combinations work in a photo-real environment

Expertise and experience

Exceptional Installation Service



Supply and install

Amwell's supply and install service is the most comprehensive and professional washroom installation service available. Our success is based on offering a flexible approach to installation dates and project deadlines.

From start to finish, every project is overseen by a dedicated and experienced team including Contract Manager, CAD Draughtsman and Quantity Surveyor. A Health and Safety Officer is also part of the team.

"A quality product, that has been enhanced by a good installation service team."

William Dixon Construction

The expert service includes -

- Attendance at pre-contract and design meetings
- Comprehensive site survey
- CAD drawings for approval and final installation drawings
- Site visits to ensure correct sequence of installation
- Liaison and co-ordination of activity with other trades
- Method Statements and Risk Assessments prepared prior to work commencing on-site
- Responsibility for off-loading and distribution of materials*
- All framework installed to datums and grid lines ensuring accurate setting out
- Bespoke framework
- Product installation by CSCS registered fitters.
- Completion of inspection sheets and monitoring of quality control
- Operation and maintenance manuals

And a comprehensive after sales service should it be required.

*subject to hoist availability



Product installation by CSCS registered fitters

Expertise and experience



Supply only

“Amwell were so helpful in advising on the design and layout of our washroom areas. They made the process so easy and simple from quotation to delivery.”

Peter Rees Owner/Partner, Erwion Caravan and Camping Park

Choose our supply only service and a dedicated Project Manager will oversee your project from order to delivery.

Starting with working drawings for approval, each washroom is bespoke manufactured and delivered to site ready to install.

Our easy to use and detailed installation instructions are provided and full technical assistance is always available. Operation and maintenance manuals are supplied on completion and our excellent after sales service is on hand should you need it.

Choosing our supply only or supply and install service you can specify an Amwell washroom with confidence.



Specify with confidence

We deliver excellence in quality and health and safety, and are proud of our environmental commitment.

Health & Safety

At Amwell we believe that a pro-active approach to Health and Safety is a fundamental part of effective and efficient management. We acknowledge our responsibilities as an employer and are committed to ensuring, so far as is reasonably practical, the health and safety of our employees and others who may be affected by our operations.

We also believe that actions speak louder than words; and we pride ourselves in having an exemplary record regarding Health and Safety, with accident statistics substantially better than the UK average. We are also introducing a thorough Integrated Management System, including Health & Safety systems to meet the requirements of BS OHSAS 18001:2007.

Our safe working systems have also been recognised by independent organisations, leading to full CHAS accreditation approval.

Quality Systems

Our Management Systems are key to ensuring continued high levels of quality (in product and systems), customer satisfaction, customer service and innovative working techniques. We constantly strive to provide a quality product and service that complies with and where possible exceeds the expectations of our customers.

To achieve quality improvements and to improve levels of customer satisfaction, Amwell have always aimed to be leaders within our sector, achieving BSS750 registration way back in 1986. Since then we have updated to our current BS EN ISO 9001:2008 system, certificate number FM00784.

Environmental

We believe that proper management of environmental systems is of utmost importance. As such, we have a strong commitment to conduct all aspects of our business in a manner that limits environmental impact. Part of our commitment is our pursuit of BS EN ISO 14001:2008, which will be introduced as part of our Integrated Management System.

Since 2006 we have been independently audited and certified under the Forest Stewardship Council (FSC) scheme, and as such we have been assessed and certified as meeting the requirements of Chain of Custody, assuring customers that products are derived from well managed forests for a variety of products. Our Chain of Custody FSC certificate number is SGS-COC-002572.



Environmental



Product Guarantee



By trading certified with the FSC you are supporting the growth of responsible forest management worldwide.



Making it easy to specify...

From an independent nursery school to the most exclusive corporate boardroom, our extensive product range works for all.

Our specially developed range of icons can help you identify at a glance the ranges that best suit the needs of your washroom environment.

Use the icons as a guide but remember, our cubicles are so flexible they work across most sectors so call us for specific project advice.



Office



Education



Entertainment



Sports and Leisure



Retail



Industry



Transport



Public Sector



Universal Access



Supply only



Supply and install



48hr Washroom



Environmental

Cubicles

From everyday practical products, through to the exceptional

Our range offers style, choice, value, performance and above all flexibility.

That flexibility is shown in the range of material options* we offer including:

- Real wood veneer
- Toughened glass
- Solid Grade Laminate (SGL)
- High Pressure Laminate (HPL)

We also offer Melamine Faced Chipboard (MFC) exclusively on our Axis, Playtime and Acorn cubicle ranges plus our 48hr Washroom.

Many of our cubicles are offered with a choice of standard or floor to ceiling heights to meet privacy requirements.

Our exceptional designs are complemented by quality engineered fittings whose components provide maximum on-site flexibility.

All cubicles in glass or solid grade laminate can be manufactured as shower cubicles with doors, curtains or independent shower screens. For changing cubicles, you can specify with integral bench seating.

All Amwell cubicles and their components can be supplied to comply with the latest Building Regulations Part M and Disability Discrimination Act.

*See page 59 for details

Note: Some options may carry surcharges, extended lead times or limited material availability. Full details provided on request and confirmed in our detailed quotations.

Minima™

Minimalist and streamlined, this is modern design at its best

Minima with Orchid glass doors



Pedestal leg
Stainless steel cylindrical piston design leg



Headrail
Slimline square headrail



Indicator bolt faceplate
Modern design in stainless steel



To see an example of Alpine glass go to page 17



Office



Sports and Leisure



Entertainment



Transport

- Slimline stainless steel pilaster and headrail
- Floating appearance
- Stainless steel furniture and fittings with stainless steel finish to hinges
- Doors and divisions in any combination of material options
- Standard height
- Option of floor to ceiling cubicles

For sheer elegance choose Minima.

See how stunning Orchid glass combines with the system to create a superb and exclusive office installation.

With slimline stainless steel pilasters, lean square headrail and modern circular indicator bolt faceplate, a washroom cubicle cannot be more contemporary.

The floating appearance of Minima is achieved through set back pedestal legs. The legs are a cylindrical piston design and allow for uneven floors. Glass divisions use a similar leg with clamp fitting.

Just as easily you could specify Minima as a shower cubicle in solid grade or glass.

Turn the page to see how striking Minima looks in the floor to ceiling HPL option.

Minima™

Sleek and modern, adding a prestigious touch to any washroom

The contemporary, minimalist quality of Minima shines through whatever material you specify.

Choose HPL shown opposite, or go for the richness that only real wood veneer can achieve.

The beauty of Minima's design goes on in the detail. For example, specify HPL or wood veneer divisions and Amwell use a specific seamless fixing system – continuous concealed T sections secured with polished 10mm diameter snake eye fixings.

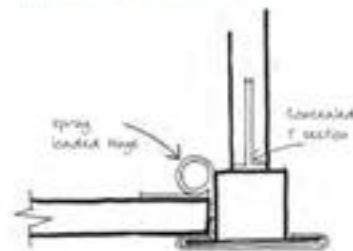
Solid grade and glass divisions use high stability brushed stainless steel channel brackets.

Flush fitting doors are achieved through pivot hinges. One hinge is sprung to return the door to an open or closed position.

Glass doors are hung using specialist hinges which return the door to closed from a balanced position.

Sleek and modern Minima is all you need for your contemporary washroom design.

Division, pilaster and door junction
The pilaster is formed to an overall thickness of only 3mm and is fully radiused to enhance the minimal appearance of Minima



Office



Sports and Leisure



Entertainment



Transport



Floor to ceiling Minima in HPL with Oak veneer panelling

Truline™

Both dynamic and different, Truline offers unconventional, impressive style

Truline with Walnut veneer doors



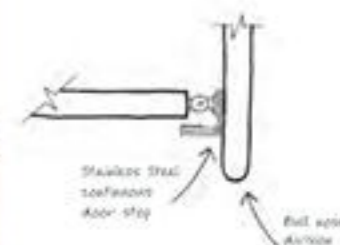
- Eliminates the need for traditional pilasters
- Maximises available washroom space
- Doors in all material options
- 28mm divisions faced with HPL or real wood veneer
- 13mm SGL door and division option for wet areas
- Standard height

Headrail

A slimline tubular stainless steel headrail runs from one division to another



Division and door junction detail



Office



Public Sector



Transport



Retail

Truline re-invents a key aspect of established washroom design.

In one bold move, Truline takes the traditional cubicle division, and extends it forward. The leading edge of the division is fully radiused to form an attractive bullnose. Everything is connected by a slimline stainless steel headrail running through the divisions.

Traditional pilasters are replaced with full-height continuous door stops in stainless steel with fully radiused vertical edges.

Truline design details also include a stainless steel effect cylindrical pedestal leg, fully adjustable, with concealed fixings and a modern circular indicator bolt faceplate.

High Pressure Laminate and wood veneer divisions are fixed at the rear with continuous concealed T sections secured with polished 10mm diameter snake-eye fixings. Solid grade divisions are fixed with stainless steel channel brackets.

Glass doors are hung using specialist hinges which return the door to closed from a balanced position.

The result is visually dynamic and unexpected. It also maximises the available washroom space.

With real wood veneer doors Truline creates a stunning office washroom. But as ever with Amwell there is a wide choice of materials.

Urban™

The contemporary and affordable flush-fronted office washroom

- Flush fronted
- Floating appearance
- Ultra durable 20mm SGL* doors and pilasters
- 13mm SGL divisions
- Standard height
- Optional floor to ceiling height
- Available in luxurious real wood veneer with rebated hard wood edges

The sleek, in line façade of Urban is a clear design statement.

A statement many commercial offices now demand, and one Urban can achieve with surprising affordability in both standard or floor to ceiling height.

It's also a statement of substance because Urban doors and pilasters are constructed from 20mm SGL*, delivering ultra durability and strength. The vertical edges are rebated into corresponding pairs which facilitate the outside face of the door closing flush with the outside face of the pilaster.

Featuring stainless steel fittings including set back pedestal legs that create a floating appearance and are adjustable to suit uneven floors, and a circular indicator bolt faceplate. Sprung-loaded adjustable stainless steel hinges return doors to an open or closed position.

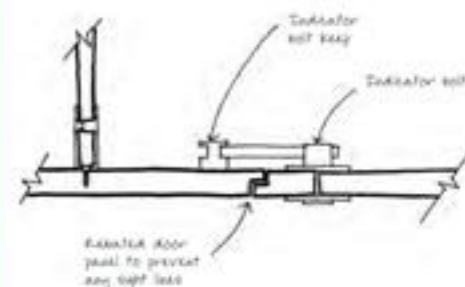
The cubicle exterior is kept free of fixings, whilst division panels are fixed to pilasters and rear walls using stainless steel semi-circular channel brackets.

The radiused headrail completes a washroom that's perfect for the modern office that wants to stand out.



Urban standard height cubicles in SGL woodgrain finish

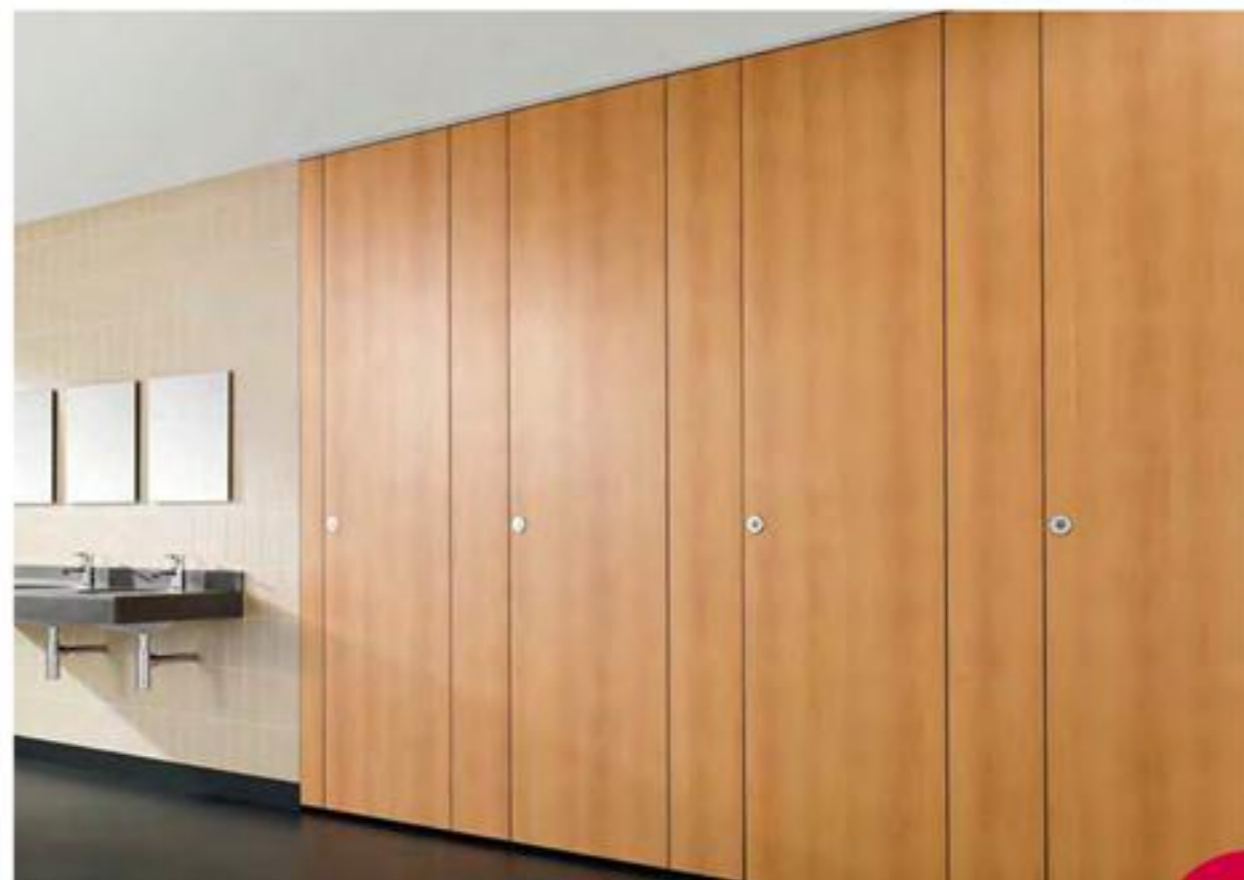
Flush front
Rebated vertical edges create a flush appearance



Office



Toilet



Urban floor to ceiling cubicles

* Available in limited colours

Coolite™

Stylish and versatile, making a clean visual statement

- Versatile & adaptable, can be specified for toilet or shower cubicles
- 10mm toughened safety glass
- Choice of silk screen colour options
- Customised patterns and effects available
- Standard height

Refreshing, light and spacious. That's the effect Coolite creates.

That's something only glass can achieve. But Coolite's design, and versatility, makes the very most of the material.

As usual with Amwell you have choice. Coolite is equally at home as a shower cubicle (with door or a shower curtain), or just as a shower screen. All with or without integral seating. It works as a toilet cubicle too.

A further lightness of design can be seen in the elegant stainless steel fittings – a simple but very attractive indicator bolt faceplate, complementary and contemporary pedestal leg supports and headrail.

Coolite glass panels are made from 10mm toughened glass with polished edges and

radiused corners for safety. Silk screen is applied in various densities of opacity on one face prior to toughening, producing an extremely hardwearing finish.

Divisions are available in a 10.5mm toughened laminated back painted glass giving a glass finish to either side of the division*.

Unlike acid-etched or sandblasted glass, screen printed glass does not show greasy marks such as fingerprints. Panels are fixed with stainless steel semi-circular angle brackets, designed to complement other components, whilst glass-to-glass fixings are secured using a through-fixed circular faceplate. Solid brass hinges are plated to complement other components. These are sprung to return doors to closed from a balanced position.

Optional external towel/door pulls can be provided instead of standard pull handles.

*Surcharge applies

Shower cubicle option in Alpine screen printed glass



Orchid screen printed glass



Peppermint screen printed glass



Sports and Leisure



Office



Coolite in Alpine glass

Linea™

From the hardest working to the most sophisticated washroom, Linea works for all

Linea with Alpine glass doors and Grey pilasters



Fluted pilasters
Polyester powder coated in
Grey or Dark Grey



Linea standard height with dark grey powder coated pilasters



Education



Retail



Public Sector



Industry



Office



Transport

- Fluted pilasters and headrail polyester powder coated for durability or anodised for a sleek and stylish finish
- Versatile – meets the needs of all washrooms
- Floating appearance
- Doors and divisions in any combination of material options
- Standard height
- Optional floor to ceiling cubicles

The beauty of Linea is its versatility.

From boardrooms and schools to factories and airports – it makes any washroom impressive.

The fluted pilaster and headrail combine elegance and strength. Specify in glass, real wood veneer or laminate and create an office washroom of true distinction.

Or change to 13mm SGL and locate Linea in the hardest working factory. It will still look outstanding but it will be a washroom, changing room or shower room, with long lasting performance.

Linea's design detail continues with cylindrical polished aluminium pedestal legs set back to create a floating appearance and a modern circular indicator bolt faceplate. Continuous concealed T sections fixed with polished 10mm diameter snake-eye fixings secure HPL and real wood veneer divisions. Solid grade laminate and glass divisions are secured with high stability stainless steel channel brackets for added rigidity where needed.

Whatever material you specify, Linea delivers.

Splash™

Durable, versatile and designed to perform in wet or dry environments

- Robust water and vandal resistant material
- Structural headrail and through-fixed hinges for ultimate durability
- Polished aluminium door furniture and fittings
- Ideal for high traffic areas
- 13mm SGL construction
- Standard height
- Optional floor to ceiling cubicles

Splash is made for wear and tear. Manufactured from robust SGL, Splash features through-fixed polished aluminium hardware for maximum durability. Whilst pedestal legs are front mounted to add even more strength.

Structural support is also enhanced by a headrail that overlaps the pilasters at the front and back. Semi circular channel brackets connect divisions to pilasters and wall.

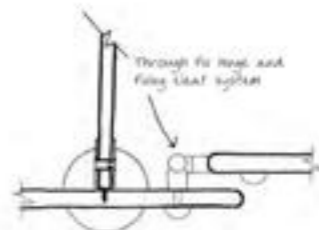
Key signs of quality are the machined smooth profile finish to all exposed door and pilaster edges, and the radiused corner safety details.

For brilliant performance that lasts and looks smart in education, commercial offices, transport, retail and industrial washrooms or any high traffic area – specify Splash. Turn the page to see how well Splash works in leisure and school changing rooms.

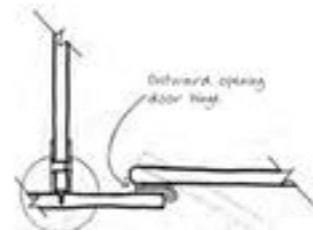
Splash indicator bolt faceplate
Polished aluminium with high visibility red and white indicator and external emergency release mechanism



Division, pilaster and door junction
Hinges are fixed through both the door and the pilaster and then anchored into a discreet faceplate for added strength



Outward opening hinge
A specialist hinge allows outward opening doors to have the appearance of an inward opening door when closed



Education



Retail



Entertainment



Office



Transport



Splash in solid grade laminate

Splash™ is ideal for swimming pools and school changing rooms

Splash shower option
Splash as a shower cubicle,
with curtain instead of doors



Everyone knows how demanding school and leisure environments can be, but Splash can deal with it all.

Splash is manufactured from water and impact resistant 13mm SGL, and is ideal as a shower or changing cubicle.

As a traditional changing cubicle you can easily add integrated seating. Then complete the project with matching Aquasafe lockers and Aquabench systems in any arrangement you want. To see Splash as a floor to ceiling cubicle turn to page 40.

Splash in solid grade laminate with matching lockers



Ultima™

A robust and distinctive washroom for busy environments

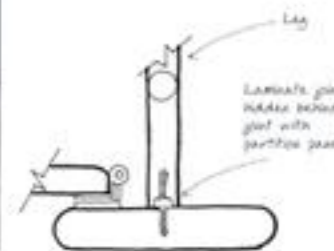
Ultima cubicles in HPL with Solid Surface vanity



Pedestal leg
Slimline, cylindrical aluminium design with concealed fixing



Bullnose pilaster
Hidden fixing detail



Office



Retail



Transport



Public Sector

- Robust and distinctive, with discreet fixings
- Slimline headrail in polished aluminium
- Floating appearance
- 28mm doors and divisions faced with HPL or real wood veneer
- 36mm bullnose pilaster faced with HPL or real wood veneer
- Standard height
- Optional floor to ceiling cubicles

For busy offices, retail changing rooms or transport services Ultima is always a popular choice. Choose either HPL or real wood veneer for doors, divisions and pilasters.

For pilasters, a substantial 38mm bullnose to vertical edges reinforces its robust appearance and performance, whilst set back cylindrical aluminium pedestal legs, adjustable and with concealed fixings, give a floating appearance.

Divisions are fixed using continuous concealed T sections anchored by polished 10mm snake eye fixings. The polished aluminium door furniture and fittings include an Allgood Modric indicator bolt and coat hook.

Ultima really is a great combination of style and strength.

Impact™

Attractive and practical, a great value washroom for all dry areas

- A competitively priced robust cubicle
- Architectural polished aluminium door furniture and fittings
- HPL doors and divisions with choice of:
 - 18mm thick square edge HPL pilasters with matching 1mm pvc lipping
 - 18mm or 30mm thick postformed HPL pilasters
- Standard height

With a choice of 36 colours, Impact allows designers to create a real visual punch on a budget.

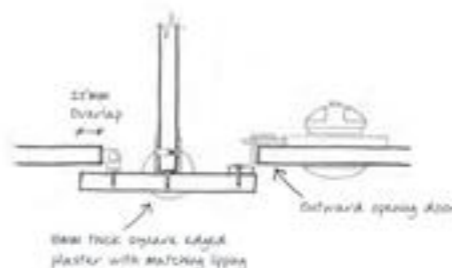
But good value doesn't have to compromise on quality. Impact has HPL doors and divisions, so it can easily take the wear and tear of medium traffic areas in commercial offices, retail, education and industrial sectors.

Impact offers the option of 18mm square edged pilasters with matching 1mm pvc lipping. Alternatively, for visual impact choose 18mm or 30mm thick pilasters with postformed soft curves to vertical edges.

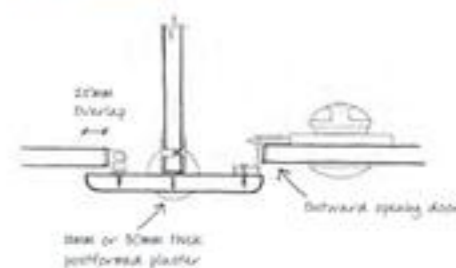
The architectural polished aluminium door furniture and fittings have been developed and refined by Amwell's own design team over many years, these offer reliable, proven performance and durability.

Pilasters are connected to divisions with aluminium semi-circular channel brackets, polished to match other fittings. The pedestal leg is front mounted for extra rigidity.

Square edge pilaster
18mm with 1mm matching pvc lipping



Postformed pilaster
In a choice of 18mm or 30mm thickness for visual impact



Retail



Education



Industry



Office



Impact cubicles in HPL with 18mm thick square edge pilasters

Axis™

Where budget is the dominant factor, Axis is the answer

- Economical and stylish
- Polished aluminium door furniture and fittings
- Choice of complete colour range
- Melamine faced chipboard with 1mm pvc lipping
- Optional HPL postformed pilaster in 18mm or 30mm thickness*
- Standard height

Axis delivers style and lasting performance on a budget. Available in a great range of colours and constructed from 18mm moisture resistant MFC, Axis is a practical solution for areas where cost is key.

Features include an aluminium pivot hinge. This ensures a safe clearance, to avoid trapped fingers, between the door and pilaster. A slimline radiused headrail overlaps the square edge pilasters at front and back for increased lateral strength. Pedestal legs are front mounted for extra rigidity.

With pilasters, divisions and doors edged with matching 1mm pvc lipping, Amwell's wide colour palette and polished aluminium door furniture and fittings, Axis offers every opportunity to the washroom designer on a budget.

Economy and quality, the perfect answer for low traffic washrooms



Office



Education



Industry



Axis in melamine faced chipboard with square edge pilasters

Sylan™

Beautiful washrooms designed and built to your individual specification

Sylan in Fumed Oak Veneer



Sylan in White Gloss

Every Sylan Washroom is unique - designed and built by craftsmen to your individual specification and precisely installed by experts to interface seamlessly with all the elements of the washroom.

At every step, from selecting the finest materials, designing the individual layout of a washroom through to precision installation, we work with you, so you can specify with confidence.

For a copy of our separate Sylan brochure call 01763 276200 or visit www.amwell-systems.com



Washrooms for Education

Bright and innovative, a safe range of inspirational washrooms for all ages

Children's washrooms need to be safe, easily cleaned and robust.

But children also want their washroom environment to be welcoming, fun and different.

We have a range of washrooms that deliver all this in style, and allow children to use them with confidence.

Playtime
Unique in design, Playtime is one cubicle with two options to choose from:

- Skittles pilasters with rounded door
- Arches pilasters with curved top door

Acorn
Classic in design and a firm favourite with children.

Plus there is the option of child height vanity units to complete your washroom installation.

Splash
Splash is available as a floor to ceiling cubicle, perfect for demanding environments such as Secondary Schools and Higher Education premises.

Encourage children to get involved with the fantastic 'Go create' area on our website
www.amwell-systems.com

Creating a children's washroom is easy and fun too

We believe that a safe and fun washroom will help a child's development. If you are a school, retail outlet or leisure venue, there are key elements that will help your washroom design come alive.

A choice of three vibrant and engaging laminate print designs for cubicle doors and vanity under panels to make children's washrooms come alive – in schools, retail outlets and leisure venues



Exciting colours so you can pick and mix, to create the look you want



A choice of delightful shapes for doors, divisions and pilasters



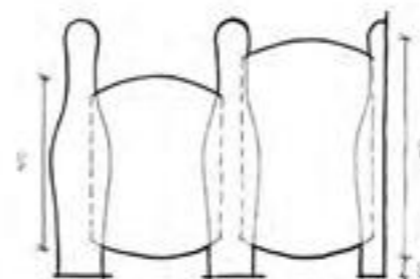
Playtime™

Lively and different, one cubicle with two options, Skittles with rounded door or Arches with curved top door

Playtime with Skittles pilasters and Ladybird print rounded doors



Door heights
Playtime Skittles pilasters with rounded door available in two door and division heights



Playtime with Skittles pilasters and rounded doors

Playtime features:

- Free-standing design
- Easy supervision
- Choice of materials: MFC, HPL or SGL
- Inward or outward opening doors
- High visibility indicator bolt faceplate with emergency release and sliding lock
- Optional magnetic catch and internal door handle
- Choice of 5 fittings colours (see page 36)

Playtime should be fun, and Playtime with Skittles pilasters and complementary rounded door is certainly that.

Get the enjoyment rolling by choosing from amazing colours, 3 laminate prints and 5 great fittings colours.

A choice of two door and division heights makes Playtime an ideal solution for both pre-school and infant schools.

The free-standing construction creates a sense of freedom. Strength is assured through the aluminium foot and wall cleats that support the pilasters and divisions (see page 36).

Playtime safety features include a door hinge that prevents little fingers from becoming trapped. A sliding lock with emergency release or magnetic door catch can be supplied with a simple polycarbonate door handle to aid exiting the cubicle.

Playtime is available with the option of outward opening doors.

Playtime™

Featuring Arches pilaster with curved top door, the design that's friendly and fun

Playtime has a range of 5 colour options for fixing cleat and aluminium foot.



Pillarbox



Sunbeam



Evergreen



Blue ink



Grey



Polished aluminium*

Clean, simple and safe. That's the appeal of Playtime. Now add 'Arches', the round top and radiused pilaster, complemented by the same soft profile curve to the doors. Available in a choice of materials, including SGL for really hard working environments.

Playtime's strong aluminium feet and wall cleats ensure rigidity and are available in a choice of colours.

When you add the option of fun laminate designs, Ladybirds, Dinosaurs** and Bubbles plus a great range of panel colours you can really make your design appeal to young children. The same anti-finger trap hinge is there too.

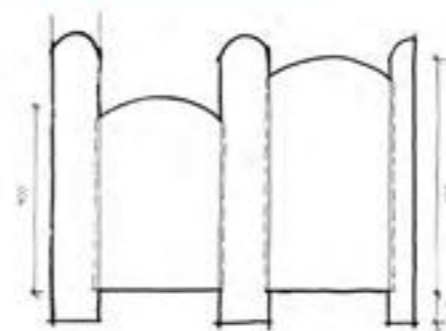
Aluminium foot***
Sturdy design ensures rigidity



Wall and division cleat
Semi-circular in design with discreet, safe through fixings



Door heights
Playtime Arches pilasters with curved top door available in two door and division heights



Playtime with Arches pilasters and Dinosaurs print curved top doors



Playtime with Arches pilasters and Dinosaurs print curved top doors

* Indicator bolt and faceplate
** Ladybirds and Dinosaurs print in HPL only
*** With colour matched polycarbonate end caps

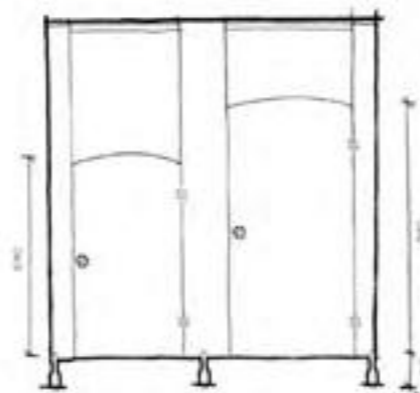
Acorn™

Versatile and practical, a washroom solution that looks great and works hard

Acorn featuring 1340mm door



Door heights
Acorn is available in various
heights to suit requirements



Suggested door heights



Acorn featuring 1040mm door

Acorn features:

- Classic design with rigid aluminium headrail
- Easy supervision
- Choice of materials: MFC, HPL or SGL
- Inward or outward opening doors
- High visibility indicator bolt faceplate with emergency release and sliding lock
- Optional magnetic catch and internal door handle
- Door furniture and fittings in polished aluminium only

Acorn is the classic children's washroom. But one that has all the same colour design potential as Playtime.

Manufactured in a choice of three boards – MFC, HPL and SGL – Acorn can meet all the demands that modern washrooms are subject to.

What's more, the gently rounded and radiused doors and sweeping divisions can be specified in various heights to suit your requirements. That means Acorn has the versatility to work as a single washroom serving a variety of ages.

Featuring our essential anti-finger trap hinge, plus adjustable pedestal legs to accommodate variable floor levels, Acorn also has a rigid aluminium headrail for added stability.

Fittings are aluminium too. And there's the same option for inward or outward opening doors, plus magnetic catch option.

Floor to ceiling

Create a washroom perfect for higher education environments that demand complete privacy.



Experiment with colour on our 'Create It' section of our website

There is a growing demand for complete privacy in the washroom area in Secondary Schools and projects involved with the 'Building Schools for the Future' programme.

Ultimate privacy can be achieved by our floor to ceiling cubicles with doors and pilasters being just 10mm above floor level, while the divisions can be taken right down to the floor into a specifically designed channel.

Our Splash range works perfectly as a floor to ceiling cubicle



48hr Washroom™

The complete washroom delivered box packed in just 48 hours*.

48hr is a competitive washroom that doesn't compromise on quality. Available in 6 colours in MFC, panels are supplied in standard sizes and can be cut to size on-site. Cut edges are then cleverly concealed in continuous channels.

Available with children's doors as well as enlarged and ambulant cubicle options, 48hr Washroom is one of the most comprehensive off-the-shelf washrooms available.

Children's Doors



Call 01763 276210 to order a copy of our separate brochure or visit: www.amwell-systems.com

* If ordered before 12pm. Delivery is working days only.



Supply only



48hr Washroom



48hr Washroom includes cubicles, ducting and vanity unit

Aqualine™

Designed for leisure. The ultimate flexible solution for changing rooms

- Totally flexible choice of changing room configurations
- Tough, rigid aluminium frame
- Significant levelling system to accommodate floors laid with a fall
- Anti finger trap hinges
- Emergency release lock
- Polyester powder coated fittings and fixtures
- 13mm SGL panels
- Standard height

Sports and leisure centres are demanding environments, but Aqualine is fully equipped for business.

Aqualine has a rigid framed construction. This even allows for free-standing installations, which help space to be used more effectively – a key requirement in modern leisure venues.

Aqualine is also flexible enough to meet the increasingly popular demand for 'walk-through' changing rooms. It can be configured with entry/exit doors that lock in unison.

The engineering within the system is considerable. The framework is fabricated from aluminium extrusions pre-treated and polyester powder coated for a durable finish, in a choice of 6 colours. The vertical support posts fix directly into the floor.

At the base, cover roses available in 6 colours conceal the levelling mechanism – vital because leisure floors are laid with a fall.

Doors attach by continuous hinge hidden within the main vertical post. They pivot on integrated hinges, to allow doors to open and close safely without the risk of trapping fingers.

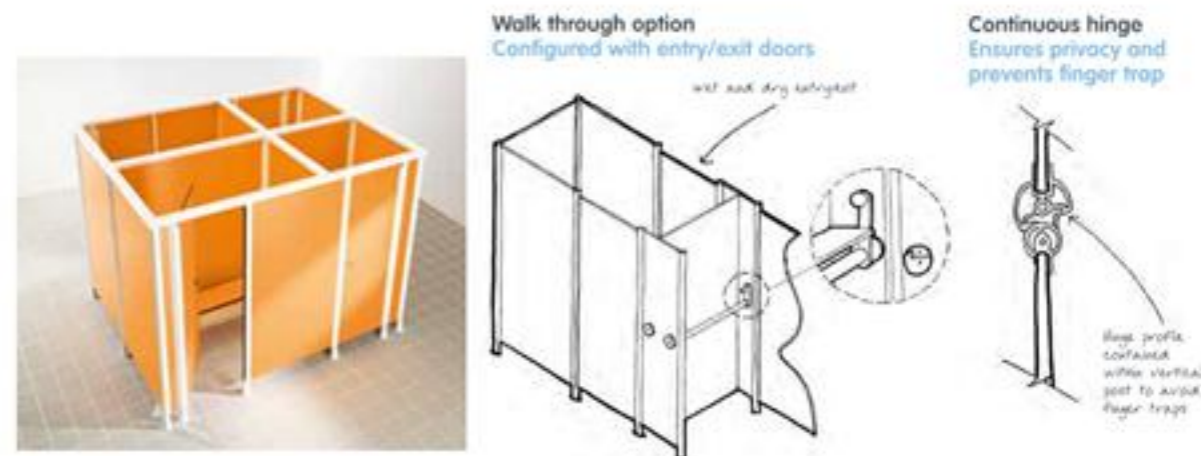
The 13mm SGL panels are through-fixed and fully water and impact resistant, promoting easy cleaning and maintenance. Added lateral rigidity is provided by a continuous 50mm x 75mm headrail mounted on the frame.

This flexible system can also be specified with shower curtains instead of doors and can be designed to support the requirements of Sport England [see page 64].

Framework and cover rose colour choice



Note: Colours as accurate as printing process allows. Actual finish to product framework is 30% gloss.



Aqualine in Pure White (RAL 9010) framework

Aquabench™

Made to measure high performance seating

- Made to measure
- Choice of flexible styles and seating options
- All exposed edges and corners radiused for safety
- Independent coat rails

Leisure, education, retail, commercial office and industrial sectors all need durable, practical seating solutions. Aquabench delivers.

There are 9 seating styles, comprising floor-mounted, cantilever and self-supporting options. Corrosion resistant aluminium frames are pre-treated and polyester powder coated after manufacture in black as standard. The framework is welded.

To this you can add a choice of seat types secured using stainless steel fittings. For 20mm* thick solid grade, choose single plank or 3 individual slots each at 90mm wide. For hardwood, 3 individual slots at 90mm wide x 25mm are provided.

As with all products, our range is flexible; call us for information on hardwood options.

Aquabench can be manufactured to suit any design requirement – including those of Sport England.

Independent hot and coat rails, to match your material and colour choice, can be supplied as part of the Aquabench package.

To view Aquabench profiles see page 64.

Solid grade laminate
Single plank



Solid grade laminate
3 slots



Hardwood
3 slots



See page 64 for bench profiles



* Available in limited colours

Aquasafe™

The high performance flexible locker system

Aquasafe lockers with Cam-lock



Aquasafe locker with a solid grade laminate carcass



Aquasafe locker with an aluminium carcass

See page 63 for Aquasafe configurations

- Waterproof SGL and Aluminium carcasses
- Preassembled for speed and ease of installation
- Standard sizes for Aluminium & SGL Carcass
- Size and configuration flexibility options in SGL upon request
- Compatible with Aquabench seating
- 5 Lock options as standard



Whatever the locker layout, however demanding the location, Aquasafe can meet the brief.

With Aquasafe lockers you have the option of a Solid Grade Laminate or Aluminium carcass.

Each locker type is available in a standard width of 300mm and 400mm however flexible size and configuration options are available in SGL upon request. Framework extrusions are constructed from satin anodized aluminium with shelves in Mercury SGL.

Aquasafe lockers offer 500mm nominal depth and a carcass height of 1800mm. Typical overall height of 1900mm is achieved when mounted on a 450mm bench or 100mm SGL plinth. Hinges are constructed from robust stainless steel.

The Aquasafe range is available up to 5 tier lockers, and as a 'Z' shaped locker.

There is a choice of lock options including hasp lock for the user's own padlock, Cam-lock, Coin return, Coin retain and digi-lock. To view these locking options please visit our website.

Aquasafe lockers are supplied with self assembly 13mm solid grade plinths. These allow for simple site levelling during installation and provide a firm base onto which a skirting/floor finish by others can be applied. Alternatively the plinth fascia can be supplied to match locker doors.

Duct panelling

Versatile and practical, close-fitting and tailor made, our ducting creates the perfect finish to any washroom

Our flexible duct panelling options are available in MFC, HPL or SGL. Or opt for the luxury of real wood veneer.

Duct panelling does more than just conceal pipework and services. It completes the washroom look and feel.

With our ducting that look is further enhanced by the minimal flashgaps between panels. And that's only possible because unlike 'one size fits all' panelling our ducting is tailor made to specific site dimensions.

Or choose close-butted panels supplied without horizontal flashgaps. Not only great to look at, close-butted panels also make unauthorised access to service voids more difficult.

Shower panels are manufactured from water resistant SGL. To prevent water ingress, horizontal edges are rebated to form an overlap which then needs to be sealed on site by a specialist contractor.

Panels can be full height, floor to ceiling or low level, and there's a choice of concealed panel fixings to allow easy access.



Square-edge panel detail with matching flashgaps



Post-formed panel detail with contrasting flashgap



Close-butted panels with contrasting flashgap

Access panels

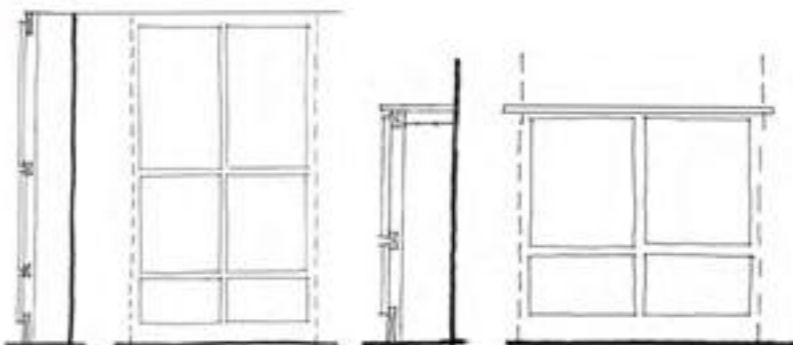
Panels can be mounted using either concealed 'push fit' or 'lift off' brackets. Panels can be hinged if required. Lockable access panels are available for added security



Full height ducts

Suitable for WC's, urinals and wall hung wash hand basins, the amount and size of the panels in each set are manufactured to your requirements

It is advisable to consider the size and weight of access panels for maintenance purposes in line with Construction Design and Management Regulation (CDM) requirements



Low level ducts

Available with the option of a removable lid/shelf panel



Vanities

Choice and style, a range of materials and options to realise and complete any washroom design

Once again, flexibility is the key. That's because our vanities are all manufactured to meet your chosen specification and sanitary ware.

There's a wide choice of surface materials. Everything from natural Granite and engineered Quartz through to Solid surface and the more traditional high pressure and solid grade laminates.

A range of profiles are available dependent on your material choice. Granite and Quartz can be machined to form most profiles, whilst Solid surface can be worked to form almost any shape with integral upstands and anti-drip waterfall front edges if required.

In addition glass and marble are available giving you even more choice to inspire your vanity designs.

All vanity units can be supplied on cantilever support brackets in stainless steel or powder coated aluminium. Alternatively, they can be supported on timber or galvanised steel frameworks with underpanels.

Vanity units are also available in child height options.

Granite

Choose the natural beauty of polished Granite.

Available in seven natural colour options from sumptuous African Black to iridescent Ivory Pink, all cut and polished to bring a look and touch of unrivalled luxury.

Granite works with a variety of basin options and is available with or without an upstand and adds quality and strength to any prestigious washroom.



African Black



Ivory Pink AM149



Gioià Veneziano AM147



Rosso Multicolour AM148



Blue Pearl AM144



Emerald Pearl AM145



Star Galaxy AM144



African Black AM143



Note: Granite is a natural product. Colour and pattern may vary. Samples are representative and only a guide

© Arwell Systems Ltd, 2011

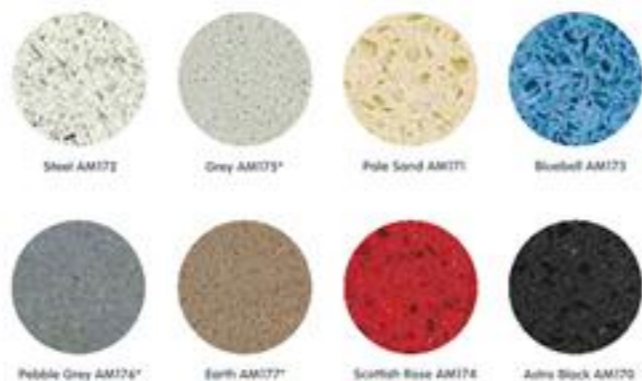
Quartz

Undeniably beautiful, superbly durable.

Quartz is spectacular, durable and distinctive. Engineered from natural Quartz and resin it has the appearance of natural stone with consistent colour and pattern.

Choose from two distinctive finishes. A beautiful soft matt finish in earth tones for a modern touch and feel, or striking polished finish in stunning colour options.

Quartz works with a variety of basin options and is available with or without an upstand.



*Matt Finish

Grey



Tornado

Solid surface

For timeless beauty choose solid surface.

Delivering a beautifully smooth and stylish finish, solid surface is both durable and flexible, and adds elegance to any washroom.

Manufactured from an advanced composition of minerals and acrylic polymer, it can be machined or thermoformed to create virtually any shape – making it really versatile and ensuring that upstands and downstands are created seamlessly. As standard, the front edge has a pencil profile.

Washbasins can be manufactured as an integral part of the vanity unit. Alternatively your own basins can be incorporated.





Full width vanity in Solid Grade Laminate with powder coated extrusion

Laminate

Durable and flexible, laminate vanity units come in a choice of styles and 36 colours.

Solid Grade Laminate

Highly durable, water and impact resistant, SGL is the perfect specification for tough, hard working washrooms.

SGL full width and semi-recessed vanity tops incorporate aluminium extrusions to link the vanity bed, upstand and downstand and are available with light or dark grey powder coating.

High Pressure Laminate

Flexible and economical, HPL vanity units can be specified in a choice of colours to reflect your overall washroom design.

Easy to clean HPL vanities are available with or without an integral upstand.



Semi recessed vanity in High Pressure Laminate

Accessories

Practical and attractive, a wide range of products to complete every washroom

Accessories are essential – and our range covers every need. From grab rails and soap dispensers, to warm air dryers and door plates. Engineered to last and perform in a choice of styles and materials.

Accessories

Choose from our stylish accessories range to add the finishing touch to your washroom



Toilet Roll Holders

Stainless Steel Jumbo*
Brushed stainless steel finish, durable and sturdy unit incorporating keylocking mechanism.
0302527
298mm Ø x 308mm H x 114mm D



White Metal Jumbo*
Finished in tough stove enamel for added durability and incorporating keylocking mechanism.
0302523
298mm Ø x 308mm H x 114mm D



White Plastic Jumbo*
Injection moulded plastic toilet roll holder with self-locking cover and visual display window.
0302538
325mm H x 280mm W x 145mm D



Toilet Roll Holders

Aluminium
Anodised aluminium single toilet roll holder with concealed wall fixings.
0302502
90mm H x 170mm W x 19mm D



Aluminium
Cast aluminium toilet roll holder with lockable single cone in dark grey powder coat finish. Also available in light grey and satin chrome.
0380071 Light Grey
0380072 Dark Grey
0380070 Satin Chrome
50mm H x 174mm W x 88mm D



Stainless Steel
Stainless steel toilet roll holder with concealed fixings.
0302509
85mm H x 141mm W x 40mm D



Warm Air Dryers

Stainless Steel
No-touch stainless steel warm air dryer, perfect for areas where hygiene is of paramount importance.
0302019
277mm H x 274mm W x 135mm D



White Aluminium
No-touch automatic operation in high quality die cast aluminium and finished in white stove enamel.
0302005
269mm H x 336mm W x 191mm D



Paper Towel Dispenser

Stainless Steel
Wall-mounted brushed stainless steel paper towel dispenser, featuring visual display window.
0302526
372mm H x 225mm W x 124mm D



Soap Dispensers

Brushed Stainless Steel
Stylish lockable soap dispenser, featuring push action dispensing and incorporating key lock with snap-shut closing for easy filling, refillable 1L reservoir.
0302525
265mm H x 100mm W x 95mm D



White Metal
Durable mild steel soap dispenser, finished in white powder coat, features push action dispensing, 1L capacity.
0302521
265mm H x 100mm W x 95mm D



White Plastic
Ideal for commercial and light industrial applications, features top quality ABS parts for durability, automatic locking cover and display window, 1L capacity.
0302540
250mm H x 115mm W x 115mm D



Soap Dispensers

Mounted
Stylish soap dispenser in chrome finish, available as either top or under mount.
0302015 Top mount
0302014 Under mount
80mm H x 105mm W x 50mm Ø



Coat Hooks

Stainless Steel
Cylindrical hook with concealed fixings, integral black rubber buffer for wall or division protection.
0397094
50mm Ø x 65mm projection (longer version available)



Aluminium
Light Grey/Dark Grey/Satin Chrome.
Durable polished aluminium coat hook with short projection making it suitable for high-traffic areas. Also available in light grey and dark grey.
0380061 Light Grey
0380062 Dark Grey
0380060 Satin Chrome
20mm Ø x 30mm D



Nylon
High strength nylon double coat hook with concealed fixings, black or white.
0230015 Black
0230016 White
56mm Ø x 43mm projection



Door Handles

Stainless Steel
Surface mounted handle with concealed fixings in two finishes - satin or polished, DDA compliant.
0182203 Satin
0182208 Polished
400mm x 60mm projection x 19mm Ø
Cover plate 50mm Ø



Grab Rail/Fixing Kit

Satin/White
Aluminium grab rail with polished stainless steel or white polyester coated finish and concealed fixings. Fixing plate kit for cubicle mounted grab rails.
S6454AC Satin
S6454MY White
0500021 Fixing kit
600mm W x 95mm D x 355mm Ø/90mm Ø

Technical Support and Typical Layouts

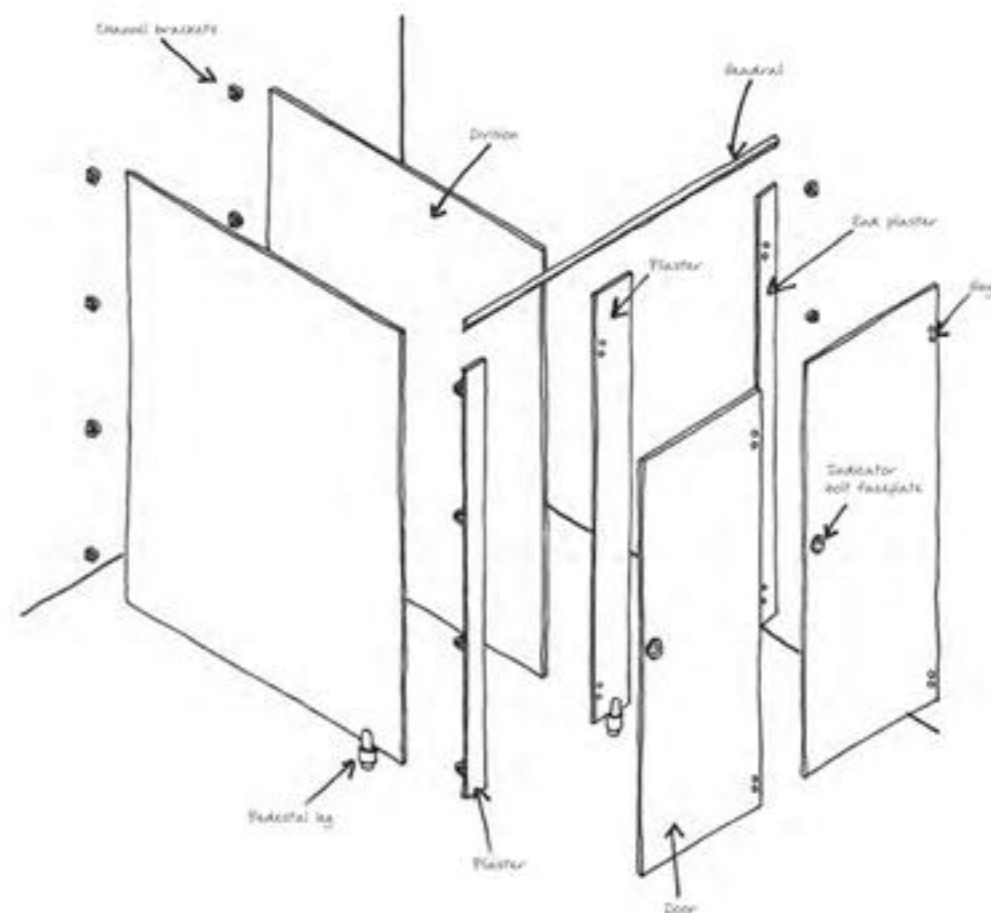
All our washrooms can be manufactured to comply with Building Regulations Part M*

Whatever the project size our sales team can give you guidance and advice on planning and layout.

We have featured typical layouts and dimensions to make specifying your washroom easy. To help even further visit the 'Go specify' area on our website for downloadable CAD blocks, NBS documents and the use of our Easy Spec tool.

* It is the customer's responsibility to work towards your obligation to the Disability Discrimination Act (DDA) and comply with the latest Building Regulations Part M. We recommend you contact your Local Authority Access Control Officer

Cubicle elements



Material options:

Real Wood Veneer
Real wood veneer can be either crown cut or straight grain producing very different appearances. Veneers are either book matched or slip matched and are bonded to a substrate such as moisture resistant chipboard with either matching or contrasting hardwood lipping. Boards are finished in a 2 part lacquer to form a protective hard polish suitable for dry areas.

Toughened glass
Suitable for wet or dry areas 8mm or 10mm toughened glass panels are finished with polished edges and radiused corners for safety.

Silk screen can be applied in various densities of opacity on one face prior to toughening, producing an extremely hardwearing finish in various colours.

Solid Grade Laminate (SGL)
With polished black radiused edges is water resistant and ideal for high use and wet areas.

High Pressure Laminate (HPL)
Suitable for dry areas with higher use. Panels are faced both sides with HPL bonded onto moisture resistant chipboard with 1mm matching pvc lipping.

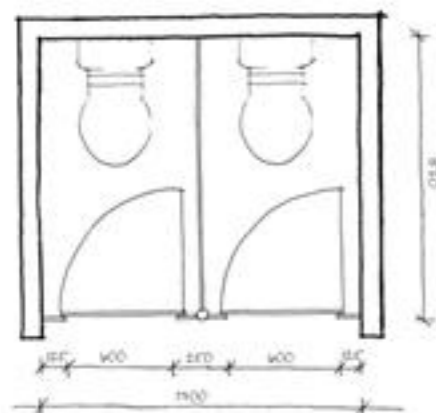
Melamine Faced Chipboard (MFC)
Ideal for low traffic, dry areas. Panels are manufactured from 18mm moisture resistant melamine faced chipboard with 1mm matching pvc lipping.

Typical layouts

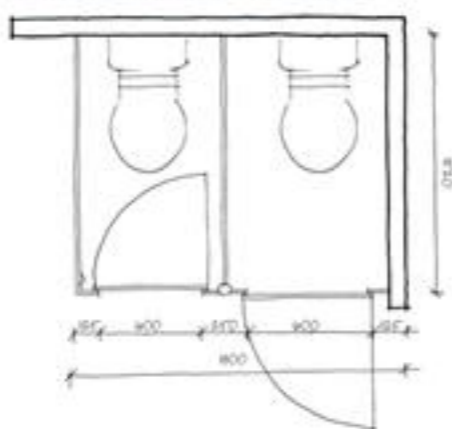
To help with the planning of your washroom here are some typical layouts and dimensions.

For more information and downloads visit our website www.amwell-systems.com

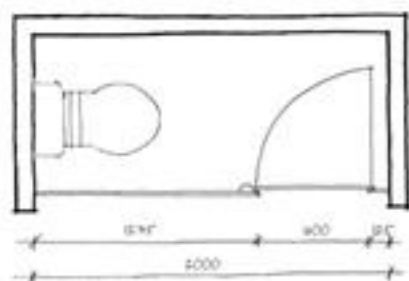
Two cubicles between walls



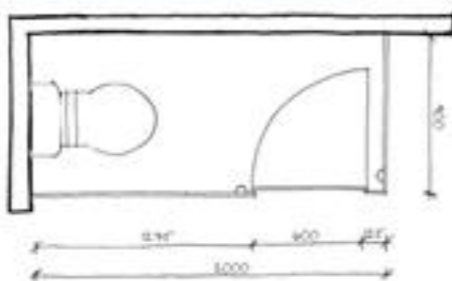
Two cubicles against walls – featuring inward and outward opening doors



Panel and door in line between walls



Panel and door in line against walls



DDA



Universal Access

All Amwell cubicles and their components can be supplied to comply with the latest Building Regulations Part M and Disability Discrimination Act (DDA)*:

Ambulant Disabled
At least one cubicle per separate sex washroom area must be of 'ambulant disabled' configuration. If there is only one cubicle, then this must be of ambulant type.

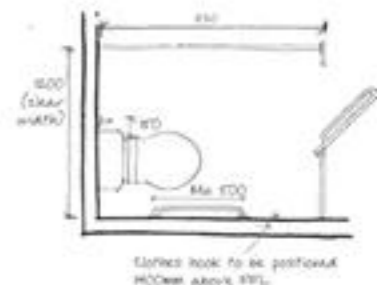
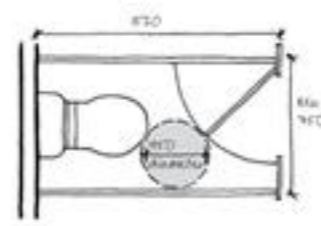
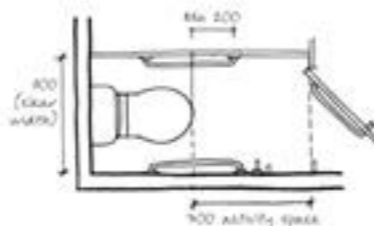
In addition to the inclusive furniture provided, horizontal grab rails and inner pull handles must be incorporated within the cubicle and are available from our Accessories range (see page 55).

Access Required
Normal WC compartments with inward opening doors are required to have a minimum manoeuvring space. This is described as a 450mm diameter circle which is to be maintained between the swing of the door, the WC pan and the side wall of the compartment. To achieve the minimum 450mm manoeuvring space an overall cubicle depth of 1520mm is recommended.

Where room layout does not permit this and outward opening doors are not an option we can usually adjust plaster and door sizes to accommodate and can provide setting out information on receipt of full WC pan information and room dimensions.

Enlarged Cubicles
If there are more than 3 cubicles in a single sex washroom area, then in addition to the 'ambulant' cubicle, an 'enlarged' cubicle must also be provided.

Further information can be downloaded from our website or call us for guidance on your project.



* It is the responsibility of the specifier/contractor to ensure compliance with the regulations and take into account your clients obligations to work towards the Disability Discrimination Act guidelines

Vanity profiles

All our vanity units are shown below with upstands and the option of no upstand.

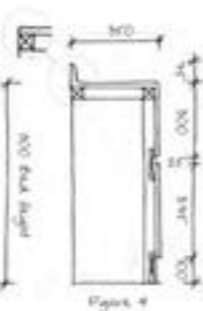
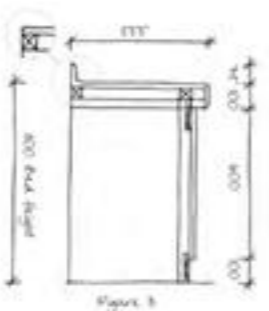
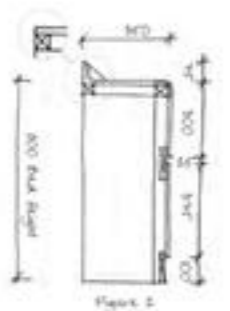
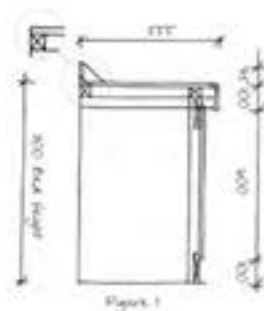
Laminate

Full width countertop SGL

Semi recessed in SGL

Full width countertop HPL

Semi recessed HPL



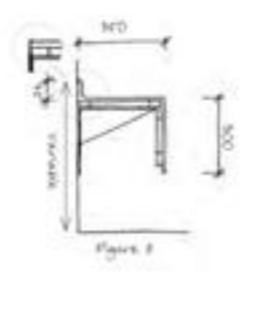
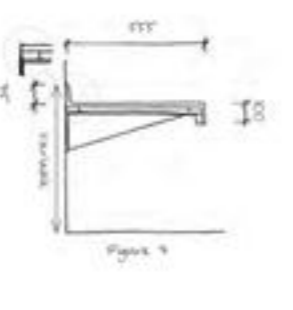
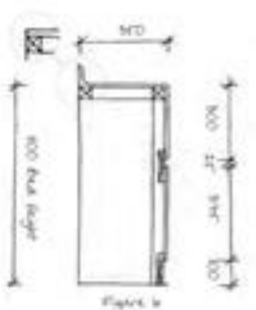
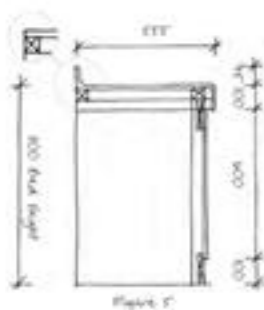
Solid surface

Full width countertop

Semi recessed

Cantilevered countertop

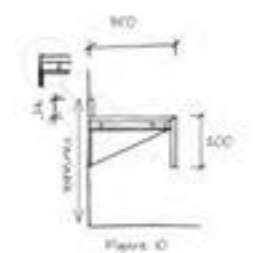
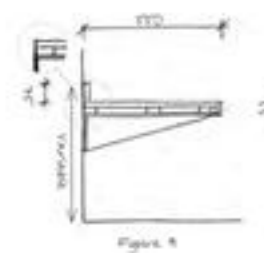
Cantilevered semi recessed



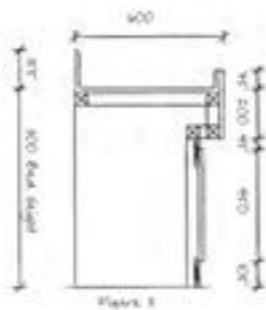
Granite and Quartz

Cantilevered countertop

Cantilevered semi recessed

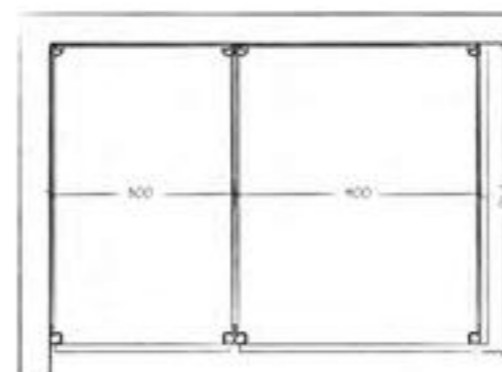


Baby Change

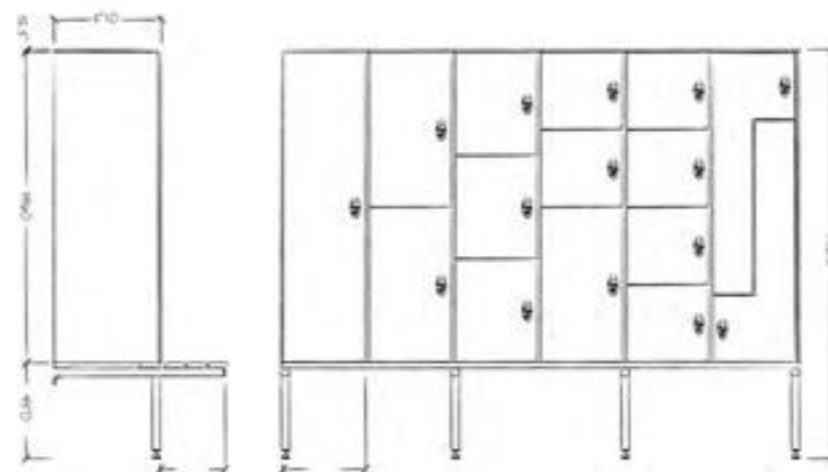
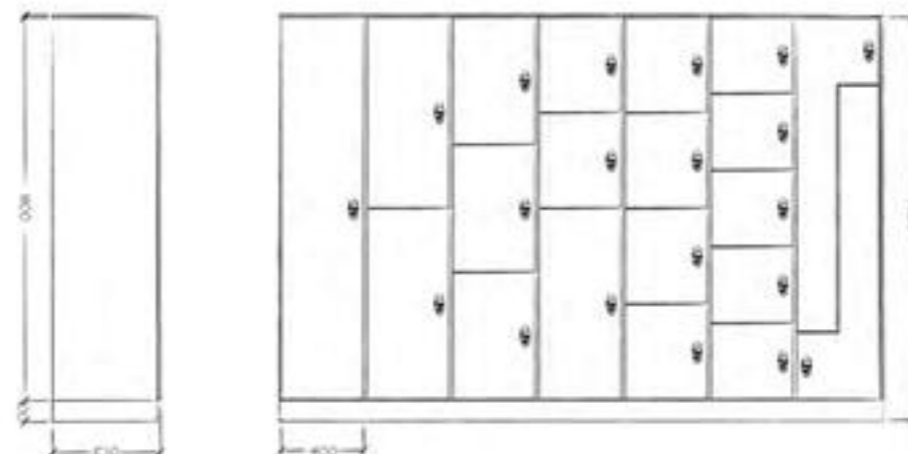


Aquasafe

The Aquasafe framework ensures exceptional strength and total sizing flexibility



Dimensions and configuration options - models 1-5 and Z Locker



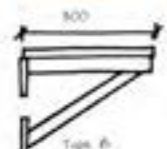
Aquabench

Framework options, standard dimensions and configuration options

Cantilever/wall hung



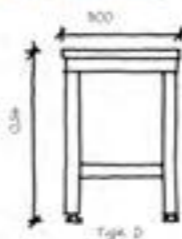
Cantilever/wall hung



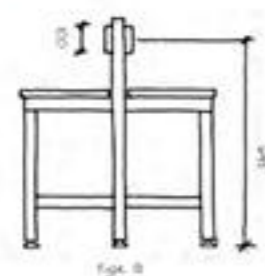
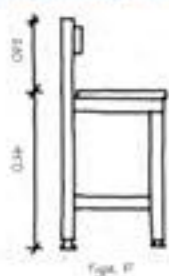
Wall/floor mounted



Self supporting



Self supporting including integral back rest



Self supporting including integral back rest and hat/coat rail



Independent hat/coat rail



Sport England

Here is a brief summary of the recommendations of Sport England with regard to changing room layout and designs.

Our range of cubicles, benching and lockers can be tailored to meet the requirements of Sport England and our sales advisors can help with advice on the planning of your washroom or changing area.

Full documents can be downloaded from www.sportengland.org.

Grooming Areas

Any grooming area is to be supplied with appropriately located fittings to give access to wheelchair users. For example: secure grooming tops on suitable legs or brackets to allow wheelchairs to be positioned partially underneath.

Lockers

A range of locker sizes must be provided to accommodate aids such as prosthetics and walking sticks. 10% should be at least 1200mm high, ideally some full-height lockers must be provided.

Sufficient lockers should be set at heights between 400 and 800mm and be at least 300mm wide.

See page 46 for details of our flexible locker systems.

Cubicles and Seating

Our flexible cubicle range can be adapted to meet Sport England requirements where a minimum turning circle of 1500mm between benching and cubicles should be maintained to facilitate unobstructed wheelchair movement.

Service & expertise
We have the people, the experience and a 'can do' approach that ensures your washroom project is a success

Visit our website www.amwell-systems.com

Where you can download brochures, CAD blocks, NBS specs and much more!

**We are here to advise on everything
from concept to completion.**

01763 276200

www.amwell-systems.com

**Amwell Systems Ltd
Buntingford Business Park
Baldock Road
Buntingford
Herts SG9 9ER
England**

**T +44 (0)1763 276200
F +44 (0)1763 276222
contact@amwell-systems.com**

**Amwell reserves the right to alter or change specifications without any notice.
Colours reproduced in this brochure are only as accurate as the printing process allows.**