

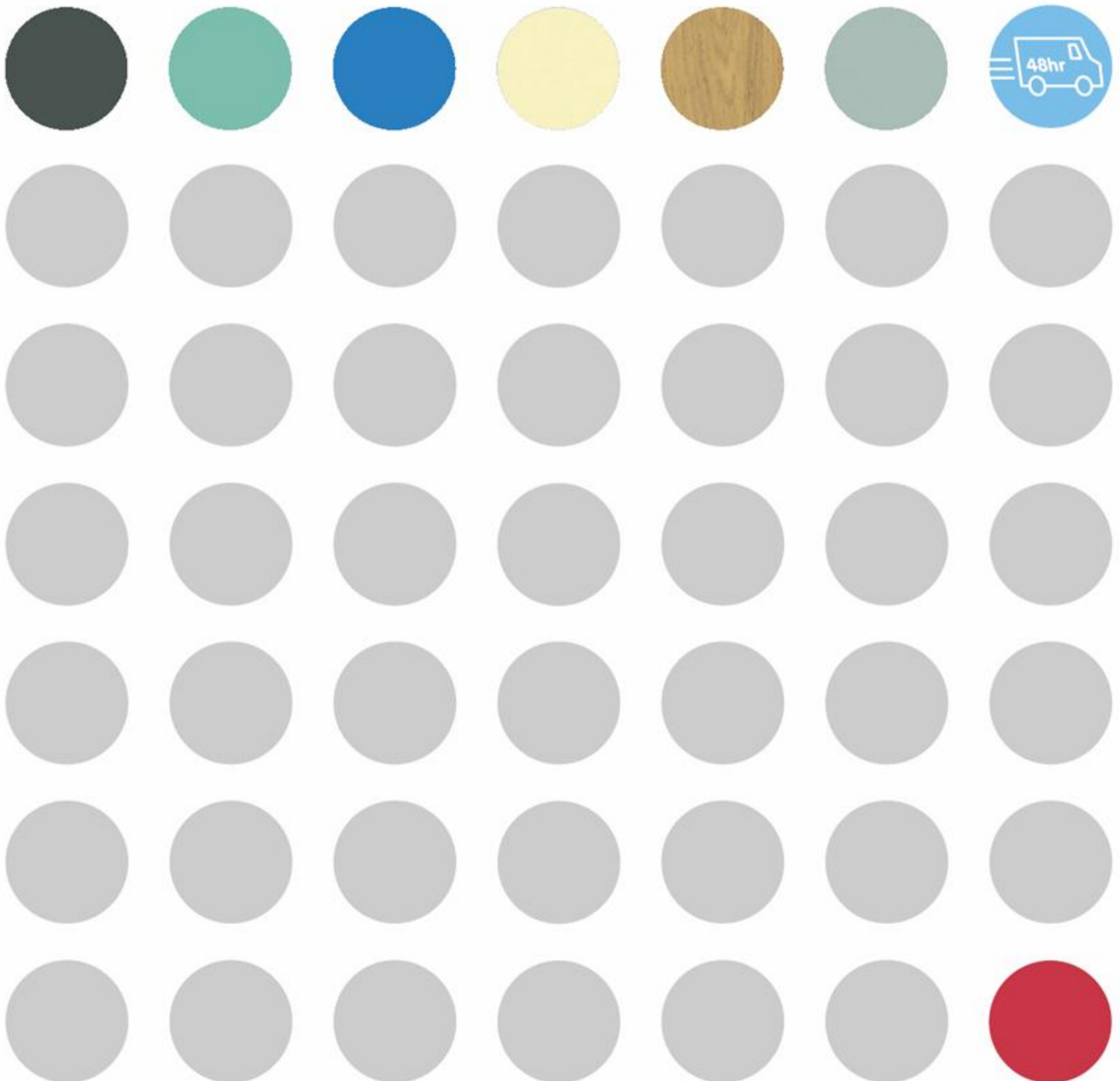


Amwell

Washrooms from concept to completion

Uniclass L2226
Cl/S/B
(22.3) X
July 2009

48hr Washroom™



48hr Washroom™

The complete washroom offer in just 48 hours

- **Delivered off-the-shelf**
- **Box packed**
- **Cubicles, ducting and vanity unit**
- **18mm Melamine Faced Chipboard (MFC)**
- **Choice of 6 colours for all panels**
- **Children's door option**
- **2 pilaster options**
- **Fully compliant with Building Regulations Part M†**

With over 25 years experience in the washroom industry you can count on our products to deliver. Our competitive 48hr Washroom* provides a fast solution without compromising on quality or style.

Including cubicles, ducting and vanity unit, 48hr Washroom is ideal for dry areas.

One of the key benefits of this product is flexibility. Panels are delivered to standard dimensions and can be cut down on-site. The cut edges are concealed in specifically designed channels, which also accommodate out of line walls (See opposite page).

There is a fantastic range of 6 colours and the option of a children's height door makes this a great solution for schools, while the 'Warm Oak' wood grain finish is perfect for a more commercial environment.

With the range also including ambulant and enlarged cubicles, our 48hr washroom is one of the most comprehensive off-the-shelf solutions available.

Call us now and we will guide you through the ordering process.

**Telephone
01763 276210**



* Please note delivery is working days only

Colour Choice



Cream
LRV 75.7



Green
LRV 41.0



Blue
LRV 19.2



Light Grey
LRV 43.4



Dark Grey
LRV 12.3

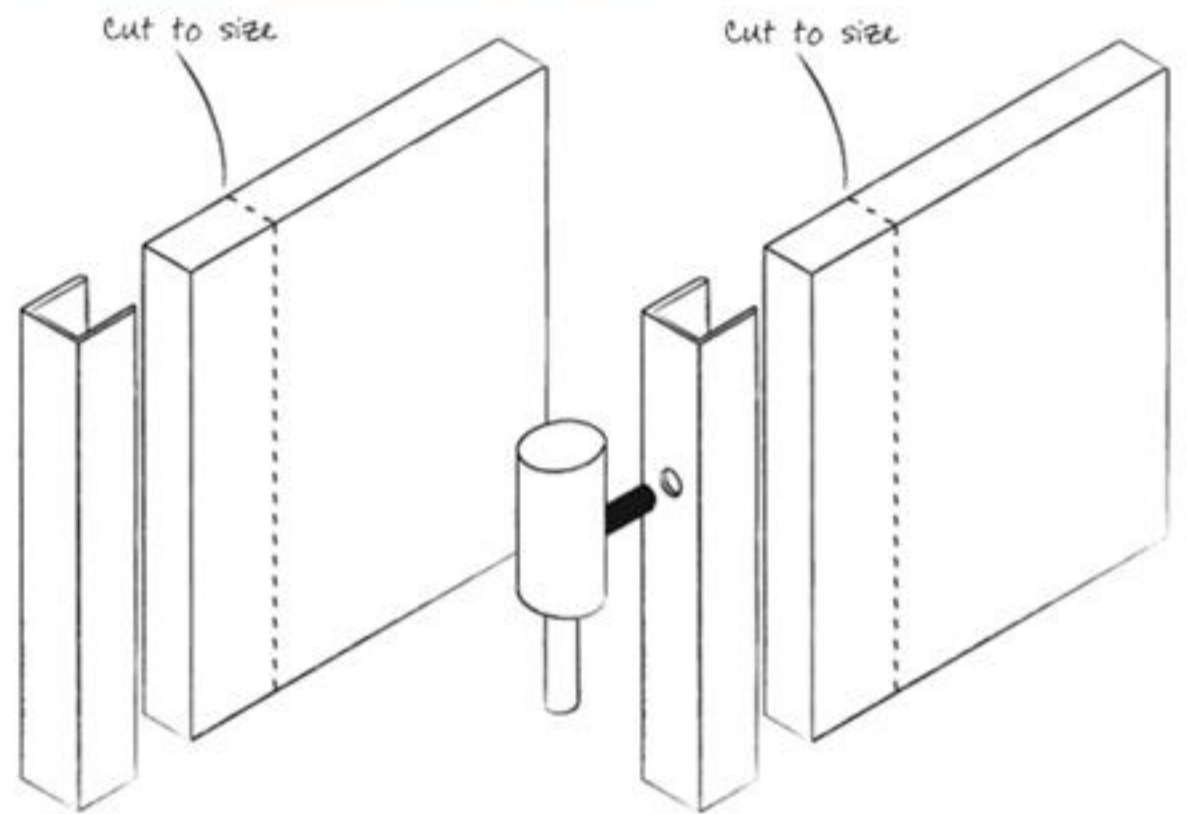


Warm Oak
LRV 34.5

The Light Reflectance Value (LRV) is given for each colour to help you ensure your washroom complies with current legislation.†

Continuous Channels

Division and door panels are delivered in standard sizes and can be cut down on-site. Cut edges are concealed in continuous channels.



Continuous wall U channel
to conceal cut edge

Continuous hinge channel
to conceal cut edge



48hr



Supply only



48hr Washroom with Warm Oak doors and Cream pilasters

Cubicles



48hr Washroom with children's door

Product Specification

- Melamine Faced Chipboard (MFC)
- 6 colour options for all panels
- Choice of square edge or postformed pilaster
- Dark Grey fittings

C1 Door Pack with Square Edge Pilaster

Outward opening/inward opening wheelchair, ambulant and enlarged.

- 1 door 1800 x 900mm
- 1 pilaster 1800 x 220mm
- 1 pilaster drilled for hinge 1800 x 115mm
- 1 pilaster no hinge 1800 x 115mm
- 1 pilaster for enlarged cubicle drilled for hinge 1800 x 400mm
- 3 UPVC door cap/wall channels 1800mm
- 1 aluminium headrail – Dark Grey 1800mm

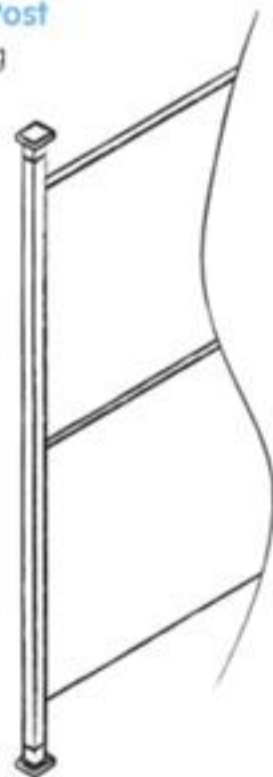
C1P Door Pack with Postformed Pilaster

As C1 Pack except pilasters postformed.

C4 Floor to Ceiling Post

Required when ordering free standing cubicles.

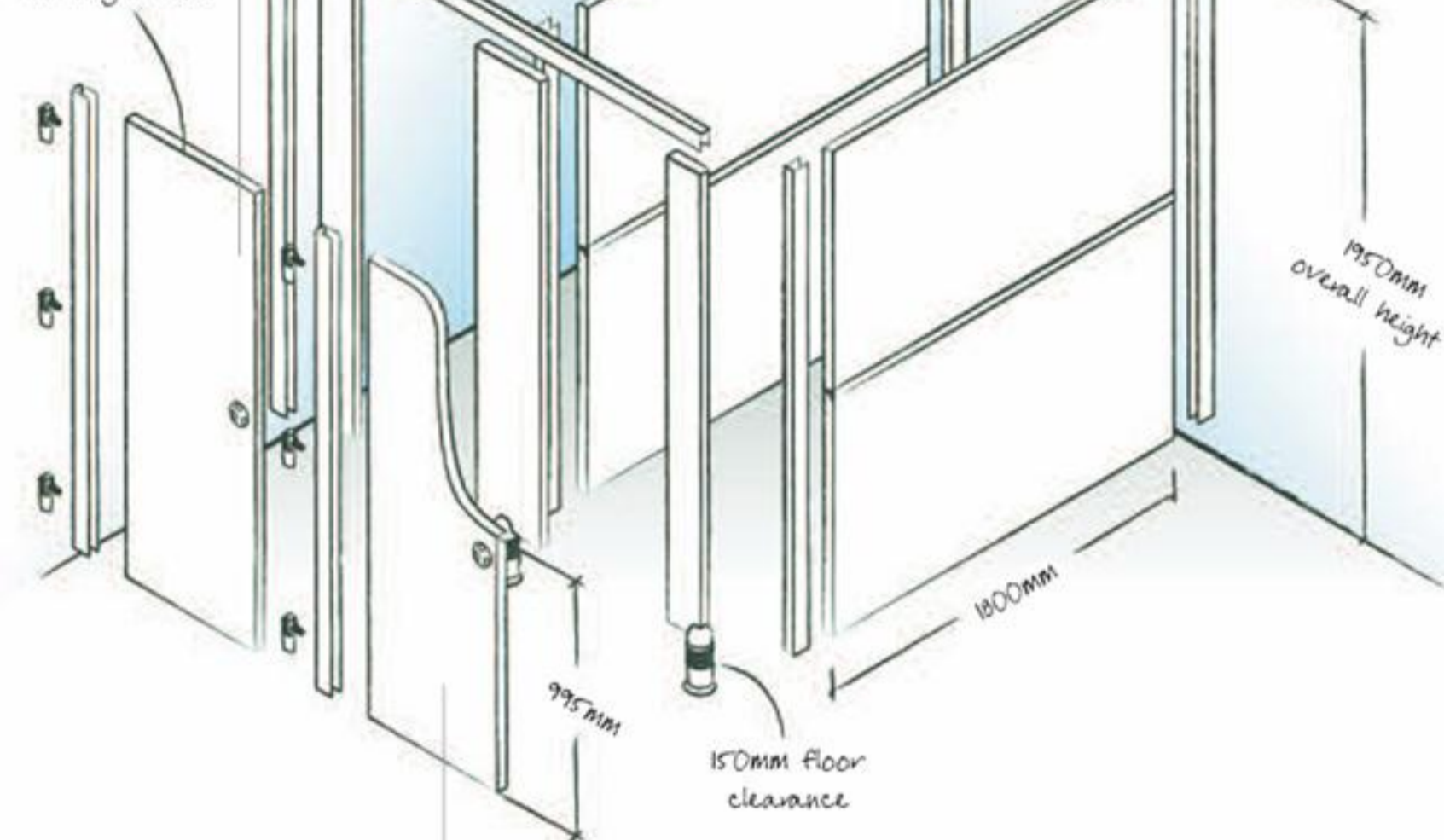
- 1 floor to ceiling post 3750mm
- 2 flanges
- 1 UPVC door cap/wall channel 1800mm
- Screws, plugs and channel through bolt fixings



C1FA Fittings Pack

- 1 ABS indicator bolt
- 1 outward opening keep
- 3 aluminium hinges – Dark Grey
- 1 toilet roll holder
- 1 coat hook
- 2 ABS pedestals
- Screws, plugs + channel through fixings

Full height door



C2 Partition Pack

- 2 partitions "halves" 900 x 1800mm
- 1 UPVC H section 1750mm
- 1 UPVC door cap/wall channel 1800mm

C1C Children's Door Pack with Square Edge Pilaster

- 1 door 1800 x 900mm
- 1 pilaster 1800 x 220mm
- 1 pilaster drilled for hinge 1800 x 115mm
- 1 pilaster no hinge 1800 x 115mm
- 1 pilaster for enlarged cubicle drilled for hinge 1800 x 400mm
- 3 UPVC door cap/wall channels 1800mm
- 1 aluminium headrail – Dark Grey 1800mm

C1CP Children's Door Pack with Postformed Pilaster

As C1C Pack except pilasters postformed.

C3 Inline Pack with Square Edge Pilaster

- 1 large pilaster 1800mm x 900mm
- 1 pilaster drilled for hinge 1800 x 550mm
- 1 aluminium headrail – Dark Grey 1800mm

C3P Inline Pack with Postformed Pilaster

As C3 Pack except pilasters postformed.

GR1 Ambulant/Enlarged Grab Rail Pack

- 3 grab rails White powder coated 600mm
- 2 door opening bars 300mm – Dark Grey powder coated
- 1 fixing pack complete

Duct Panels



Product Specification

- Melamine Faced Chipboard (MFC)
- 6 colour options for panels
- Duct panel widths and heights can be varied by adjusting width of flashgaps
- Appropriate framework to be supplied by installer

Standard Height

F1 Flashgap Pack

- 2 flashgap – unedged 2600 x 200mm
- 1 flashgap – edged 2600 x 201mm
- 16 shrinkage plates and screws

P3 Plain Panel

- 1 plain panel 2250 x 700mm
- 1 x 1mm PVC re-edging strip 2500mm
- 10 plastic clips and screws

P4 Plain Panel

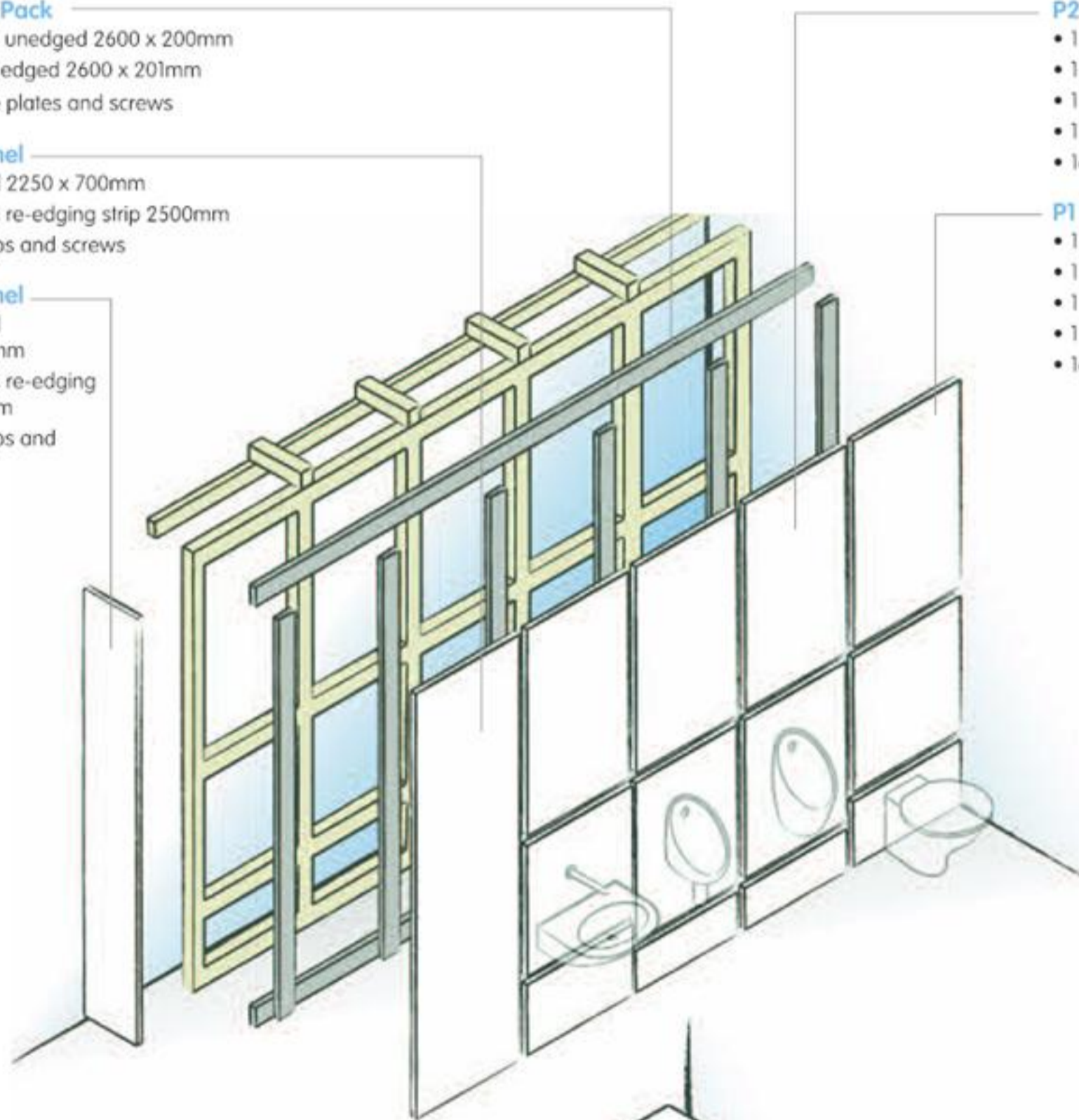
- 1 plain panel 2250 x 300mm
- 1 x 1mm PVC re-edging strip 2500mm
- 10 plastic clips and screws

P2 Urinal Panel Pack

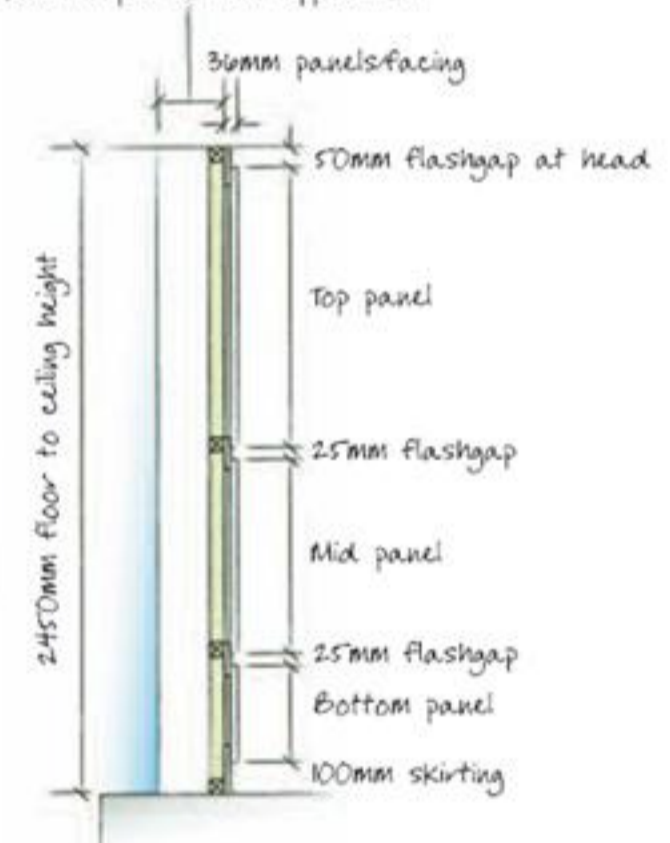
- 1 bottom panel 225 x 700mm
- 1 middle panel 850 x 700mm
- 1 top panel 1125 x 700mm
- 1 x 1mm PVC re-edging strip 2500mm
- 16 plastic clips and screws

P1 Washbasin/WC Panel Pack

- 1 bottom panel 405 x 700mm
- 1 middle panel 670 x 700mm
- 1 top panel 1125 x 700mm
- 1 x 1mm PVC re-edging strip 2500mm
- 16 plastic clips and screws



Duct depth to suit application



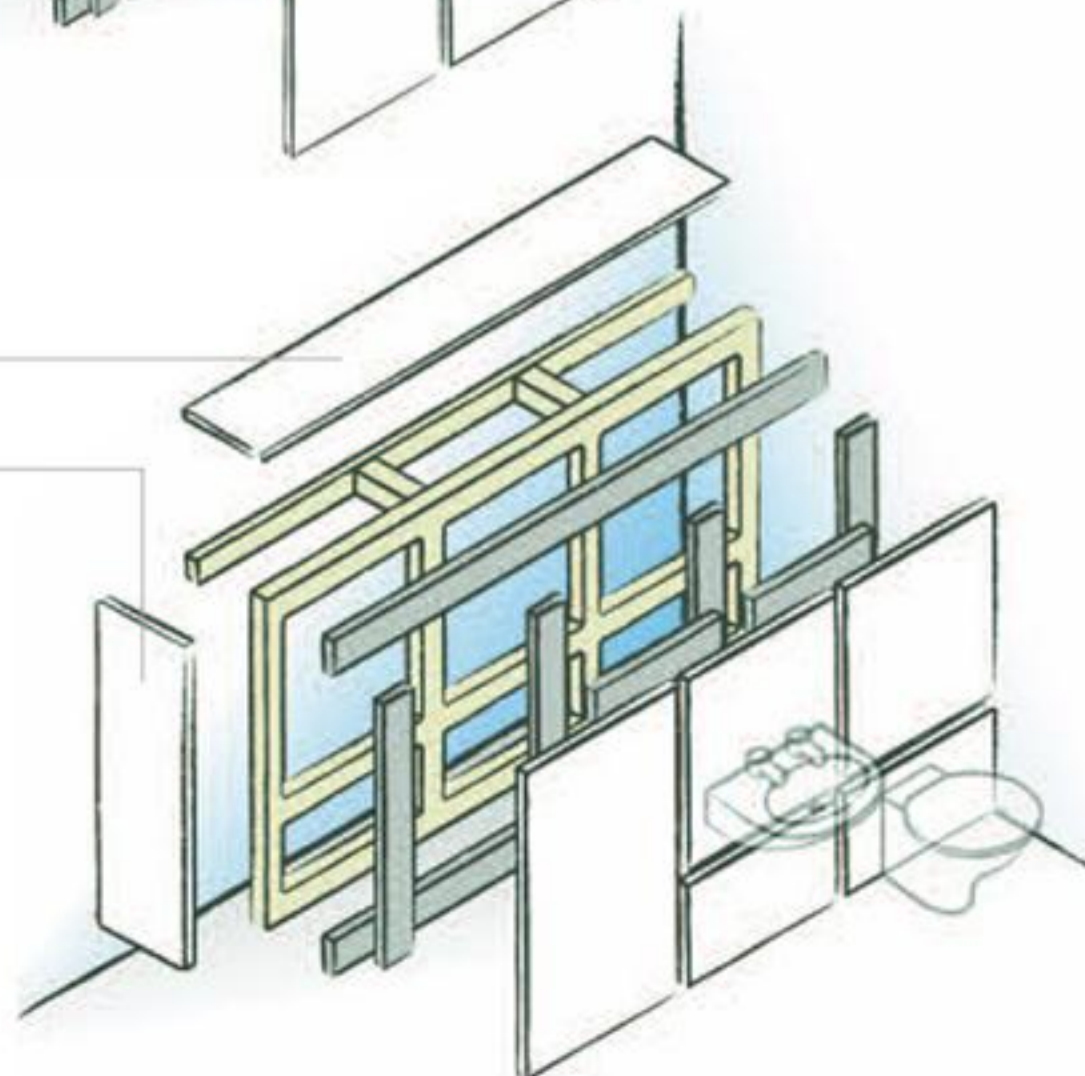
Low Level

P4 Plain Panel

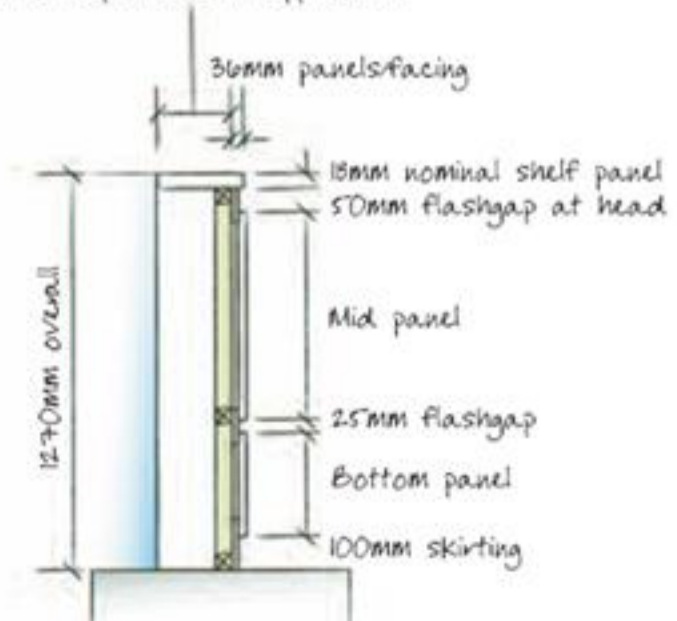
- 1 2250 x 300mm full panel

Plain Panel/Return End

- 1 2250 x 300mm full panel



Duct depth to suit application



Vanity Units

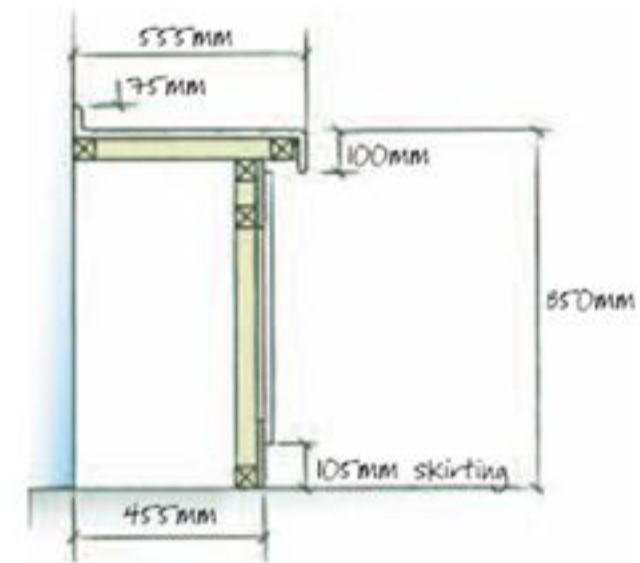
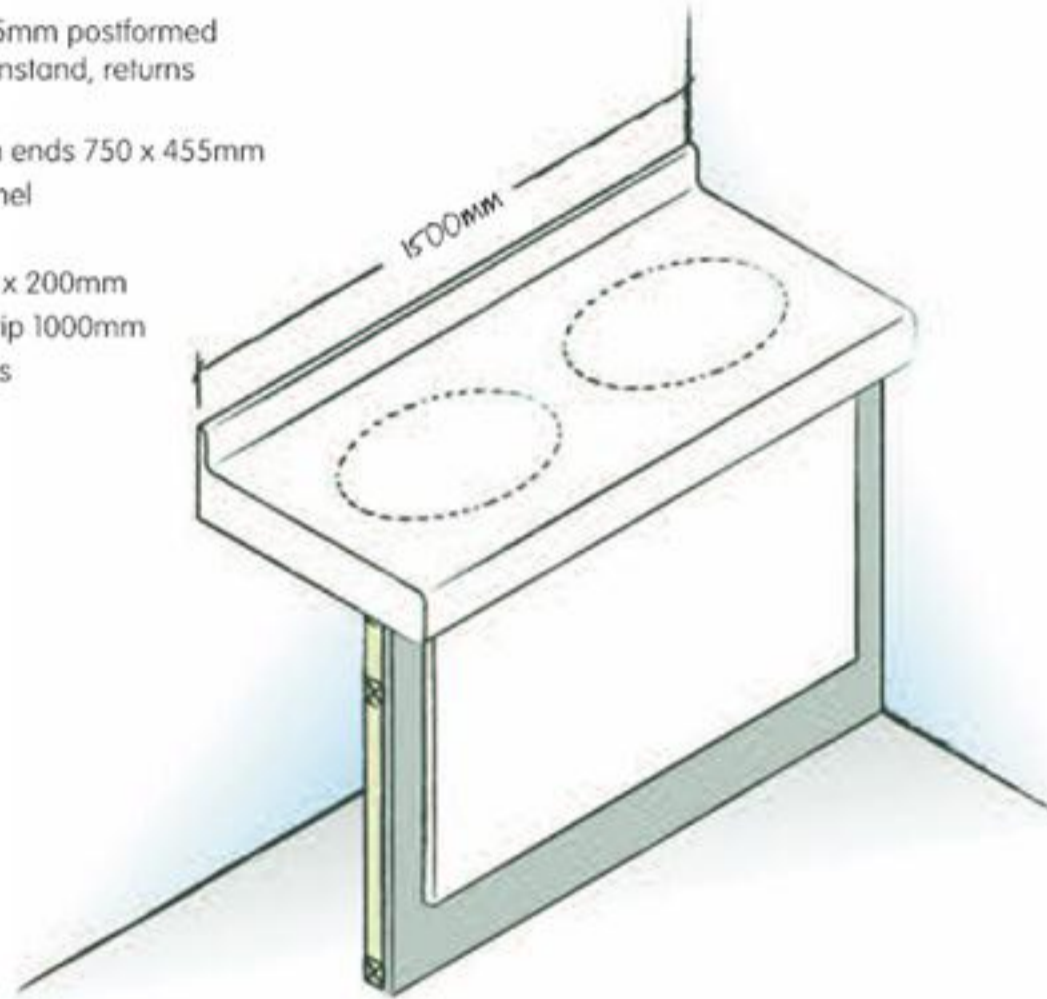


Product Specification

- Vanity Top in High Pressure Laminate (HPL)
- Panels and Flashgaps in Melamine Faced Chipboard (MFC)
- 6 colour options for all panels
- Return end panel will be supplied oversize to allow for on-site adjustments
- For a longer length vanity unit, join two vanity lengths
- Appropriate framework to be supplied by installer

VI Vanity Unit

- 1500 x 555mm top with 75mm postformed upstand and 100mm downstand, returns and support brackets
- 2 loose underframe return ends 750 x 455mm
- 1 1380 x 645mm underpanel
- Clips and screws
- 3 unedged flashgap 1300 x 200mm
- 1 x 1mm PVC re-edging strip 1000mm
- Fixing brackets and screws



All sanitaryware to be supplied and fitted by others.

Cubicle Fittings



ABS Indicator Bolt Faceplate
With external emergency release mechanism



ABS Pedestal Leg
H 180mm W 90mm.



Polycarbonate Coat Hook
H 50mm W 20mm
D 38mm



Polycarbonate Toilet Roll Holder
W 155mm H 130mm
D 27mm



Aluminium Headrail
H 50mm D 30mm



Aluminium Hinge
H 75mm W 30mm



UPVC Wall Channel and H Section



Outward Opening Door Handle
H 175mm W 145mm
Projection 70mm



White Grab Rail
L 600mm
Projection 95mm

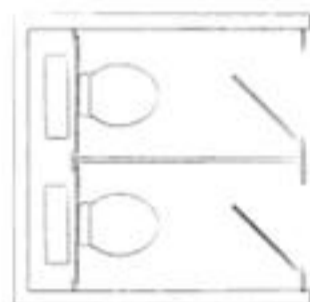
Call one of our Business Support Team who are available to guide you through the order process. Call us now on 01763 276210.

Use the following steps to choose the correct 48hr Washroom packs for your project.

1 Selecting Cubicles

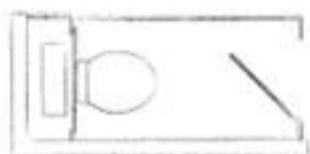
- Look at the four layouts below and work out which suits your project
- Refer to the table below it and read along the top line to find the number of cubicles you require
- Read down the column under the number of cubicles to identify the pack and quantities you require

Please note minimum cubicle width is 750mm



Cubicles Between Walls

Number of cubicles	1	2	3	4	5	6	7	8
Door pack	1	2	3	4	5	6	7	8
Fittings pack	1	2	3	4	5	6	7	8
Division pack	0	1	2	3	4	5	6	7
Floor/ceiling post pack	0	0	0	0	0	0	0	0
Maximum width (mm)	1060	2120	3180	4240	5300	6360	7420	8480

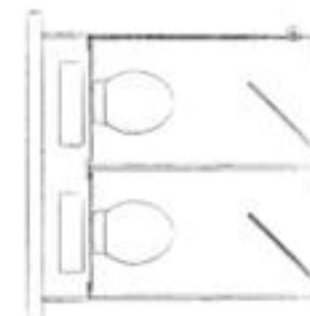


Cubicles Against Wall

Number of cubicles	1	2	3	4	5	6	7	8
Door pack	1	2	3	4	5	6	7	8
Fittings pack	1	2	3	4	5	6	7	8
Division pack	1	2	3	4	5	6	7	8
Floor/ceiling post pack	0	0	0	0	0	0	0	0
Maximum width (mm)	1060	2120	3180	4240	5300	6360	7420	8480

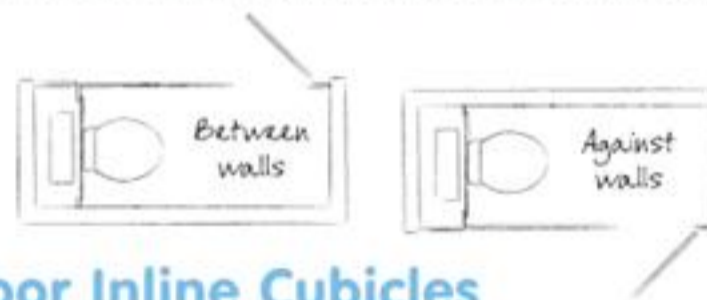
Options

- Children's door pack instead of the standard door pack
- Door packs available with square edge pilaster or postformed pilaster
- Ambulant/enlarged grab rails and door opening bars are available separately



Free Standing Cubicles

Number of cubicles	1	2	3	4	5	6	7	8
Door pack	1	2	3	4	5	6	7	8
Fittings pack	1	2	3	4	5	6	7	8
Division pack	2	3	4	5	6	7	8	9
Floor/ceiling post pack	1	1	1	2	2	2	2	2
Maximum width (mm)	1060	2120	3180	4240	5300	6360	7420	8480



Panel and Door Inline Cubicles

	Between walls	Against walls
Number of cubicles	1	1
Door pack	1	1
Fittings pack	1	1
Division pack	0	1
Inline pack	1	1
Maximum length (mm)	2000	2000

2 Selecting Duct Panels

- Determine how many panels you require of each type
- Check they will fit into the available space on-site*
- For each panel you will need one flash gap pack

For further information and diagrams of specific junction details please visit our website.

3 Selecting Vanities

- Determine how many vanity basins you require

1500mm long top	Up to 2 basins	Pack V1

- Check that the vanity top you choose will fit into the available space on-site
- The vanity pack includes under panel, return end, flashgaps and a fixing kit.

All 48hr Washroom cubicles, ducting and vanity packs will be delivered in a clearly labelled box along with all of the correct fixing components and instructions.

* Always leave a vertical gap 25mm wide between a panel and a wall. Leave a 25mm wide vertical gap between each panel. For WC panels, leave 50mm for fixing a cubicle partition. Plain panel packs P3 and P4 can be cut down and re-edged on site to cater for ranges that do not accommodate 700mm modules.

We are here to advise you.

01763 276200

www.amwell-systems.com

Material Specification

Melamine Faced Chipboard (MFC) is suitable for dry areas. Panels are manufactured from moisture resistant melamine faced chipboard and supplied square edged with matching 1mm PVC lipping. Finished panel thickness is 18mm (nominal thickness).

High Pressure Laminate (HPL) panels are faced both sides with high pressure laminate bonded onto moisture resistant chipboard. Finished panel thickness is 18mm (nominal thickness).

Please note only vanity top and postformed pilasters are available in HPL.

48hr Washroom is not suitable for wet areas.

Amwell Systems Ltd
Buntingford Business Park
Baldock Road
Buntingford
Herts SG9 9ER
England

T +44 (0)1763 276200
F +44 (0)1763 276222
contact@amwell-systems.com

Amwell reserves the right to alter or change specifications without any notice.
Colours reproduced in this brochure are only as accurate as the printing process allows.



FM00784



CONTRACTORS HEALTH & SAFETY ASSESSMENT SCHEME
Accredited Contractor
www.chas.gov.uk

© Amwell Systems Ltd, 2009